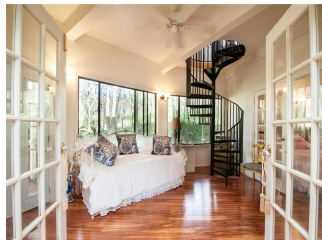
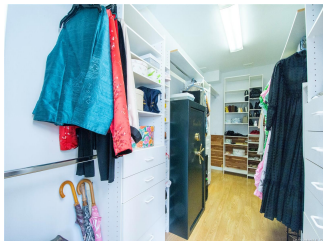
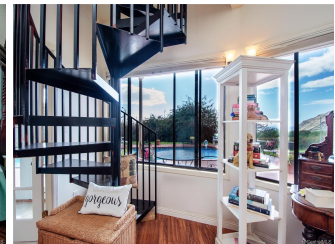


84-980 Moalehua Street, Waianae 96792 * \$1,100,000

Sold Price: \$1,100,000	Sold Date: 04-23-2020	Sold Ratio: 100%
Beds: 3	MLS#: 201931468, FS	Year Built: 1995
Bath: 2/1	Status: Sold	Remodeled:
Living Sq. Ft.: 2,362	List Date & DOM: 01-04-2020 & 52	Total Parking: 3
Land Sq. Ft.: 44,997	Condition: Above Average	Assessed Value
Lanai Sq. Ft.: 1,080	Frontage:	Building: \$475,200
Sq. Ft. Other: 0	Tax/Year: \$204/2019	Land: \$355,200
Total Sq. Ft. 3,442	Neighborhood: Makaha	Total: \$846,400
Maint./Assoc. \$347 / \$0	Flood Zone : Zone D - Tool	Stories / CPR: Two / No
Parking: 3 Car+, Driveway, Garage	Frontage:	
Zoning : 56 - Country District	View: Coastline, Golf Course, Mountain, Ocean, Sunset	

Public Remarks: Unique Custom Design Home with Beautiful 15'x40' Pool. Featuring Magnificent Panoramic 360-degree unobstructed Ocean & Mountain views. Located on 1 acre (45,000 sq. ft) scenic lot with Lava Rock wall, in prestigious Gated Community Mauna 'Olu Estates. This (3) bedroom (2/1) bath offers numerous amenities: 2nd floor: Open floor plan, with two circular staircases, high vaulted ceiling, recessed lighting, beautiful French doors leading to wraparound second floor deck. Kitchen with all major built-in appliances, Large island, Corian countertops, Pergo Curly Koa flooring throughout. First floor: Master bedroom with French doors opening to pool and patio. Two quest bedrooms. 10ft ceilings. Extra large Jacuzzi tub. Two guest bedrooms. Beautifully landscaped yard with Pool & Patio. Extra large 3 car Garage with finished interior; and one bay converted to studio apartment with vaulted ceiling & full bathroom. Lots of parking. Lot has gentle slope ideal for expansion. Make an Appointment Today! **Sale Conditions:** None **Schools:** [Makaha](#), [Waianae](#), [Waianae](#) * [Request Showing](#), [Photos](#), [History](#), [Maps](#), [Deed](#), [Watch List](#), [Tax Info](#)





Address	Price	Bd & Bth	Living / Avg.	Land Avg.	DOM
84-980 Moaelehua Street	\$1,100,000	3 & 2/1	2,362 \$466	44,997 \$24	52

Address	Tax Maint. Ass.	Assessed Land	Assessed Building	Assessed Total	Ratio	Year & Remodeled
84-980 Moaelehua Street	\$204 \$347 \$0	\$355,200	\$475,200	\$846,400	130%	1995 & NA

Address	Sold Price	Sold Date	Sold Ratio	Original Ratio	Sold Terms
84-980 Moaelehua Street	\$1,100,000	04-23-2020	100%	100%	Conventional

[84-980 Moaelehua Street](#) - MLS#: [201931468](#) - Unique Custom Design Home with Beautiful 15'x40' Pool. Featuring Magnificent Panoramic 360-degree unobstructed Ocean & Mountain views. Located on 1 acre (45,000 sq. ft) scenic lot with Lava Rock wall, in prestigious Gated Community Mauna 'Olu Estates. This (3) bedroom (2/1) bath offers numerous amenities: 2nd floor: Open floor plan, with two circular staircases, high vaulted ceiling, recessed lighting, beautiful French doors leading to wraparound second floor deck. Kitchen with all major built-in appliances, Large island, Corian countertops, Pergo Curly Koa flooring throughout. First floor: Master bedroom with French doors opening to pool and patio. Two guest bedrooms. 10ft ceilings. Extra large Jacuzzi tub. Two guest bedrooms. Beautifully landscaped yard with Pool & Patio. Extra large 3 car Garage with finished interior; and one bay converted to studio apartment with vaulted ceiling & full bathroom. Lots of parking. Lot has gentle slope ideal for expansion. Make an Appointment Today! **Region:** Leeward **Neighborhood:** Makaha **Condition:** Above Average **Parking:** 3 Car+, Driveway, Garage **Total Parking:** 3 **View:** Coastline, Golf Course, Mountain, Ocean, Sunset **Frontage:** Pool: In Ground, Vinyl **Zoning:** 56 - Country District **Sale Conditions:** None **Schools:** [Makaha](#), [Waianae](#), [Waianae](#) * [Request Showing](#), [Photos](#), [History](#), [Maps](#), [Deed](#), [Watch List](#), [Tax Info](#)

DOM = Days on Market