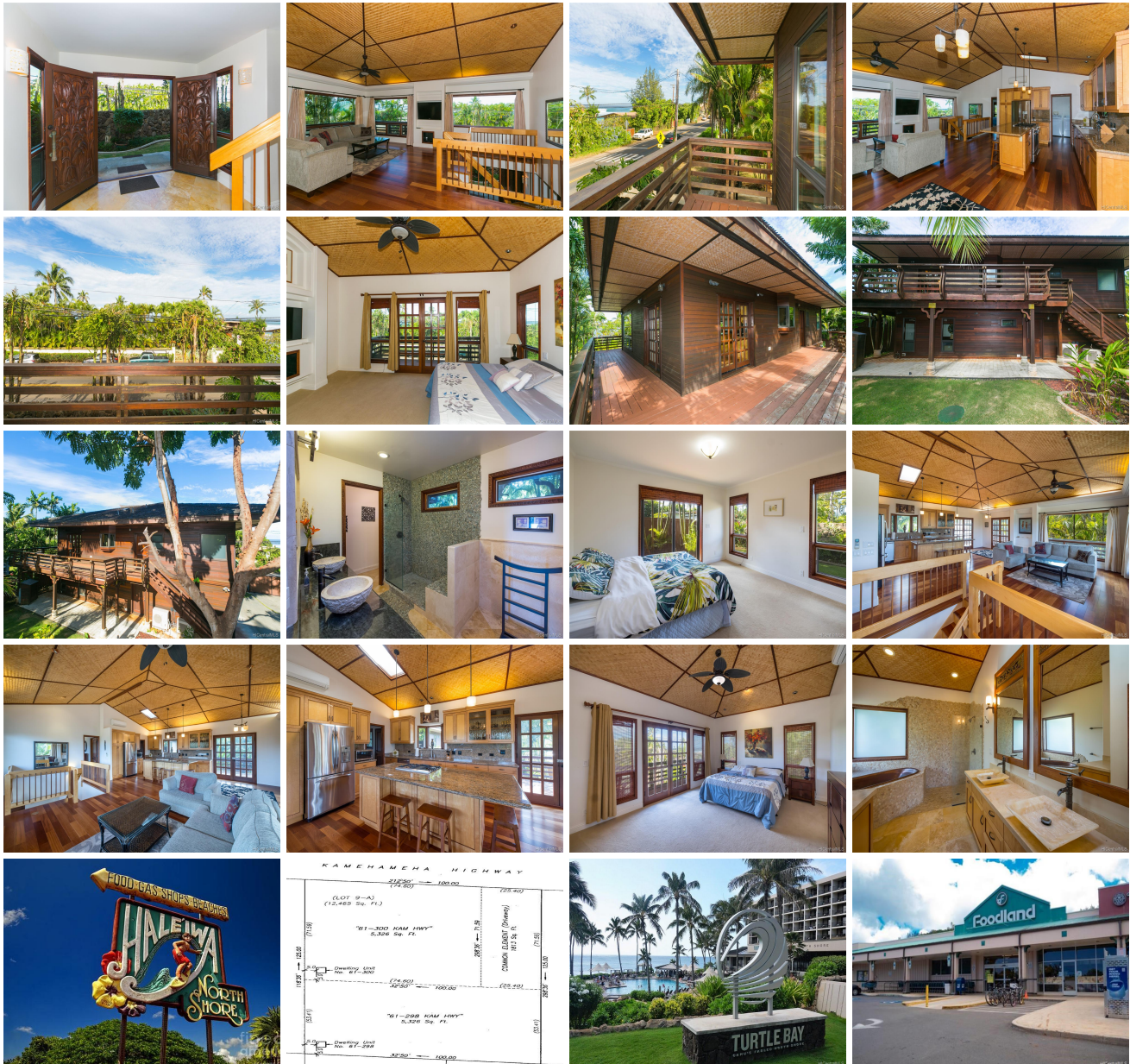


, Haleiwa 96712 * \$1,349,997 * Originally \$1,400,000

Sold Price: \$1,360,000	Sold Date: 05-27-2021	Sold Ratio: 101%
Beds: 3	MLS#: 201932889, FS	Year Built: 2007
Bath: 2/1	Status: Sold	Remodeled:
Living Sq. Ft.: 2,147	List Date & DOM: 11-19-2019 & 469	Total Parking: 4
Land Sq. Ft.: 6,232	Condition: Excellent	Assessed Value
Lanai Sq. Ft.: 0	Frontage:	Building: \$671,300
Sq. Ft. Other: 0	Tax/Year: \$628/2018	Land: \$618,000
Total Sq. Ft. 2,147	Neighborhood: Kawailoa-north Shore	Total: \$1,289,300
Maint./Assoc. \$0 / \$0	Flood Zone : Zone D - Tool	Stories / CPR: Two / Yes
Parking: Driveway, Garage	Frontage:	
Zoning : 05 - R-5 Residential District	View: Coastline, Garden, Mountain, Ocean	

Public Remarks: Must See! Newer Bali-Styled Home. Excellent craftsmanship and materials used (Hardwoods, Onyx, Marble, Bamboo, Granite, Travertine and Copper Accents) in gated Custom Built Home. Enjoy ocean views from your private lanais or relax in your lush professionally landscaped yard. Close to "Alligators" white sand beach and Waimea Bay, and a short drive to Historic Haleiwa Town. Located just 2 miles south of Foodland Pupukeya and 20 mins south of Turtle Bay Resort. Just bring your beach towel to this turn-key home. **Sale Conditions:** None **Schools:** , , * [Request Showing](#), [Photos](#), [History](#), [Maps](#), [Deed](#), [Watch List](#), [Tax Info](#)





Address	Price	Bd & Bth	Living / Avg.	Land Avg.	DOM
	\$1,349,997	3 & 2/1	2,147 \$629	6,232 \$217	469

Address	Tax Maint. Ass.	Assessed Land	Assessed Building	Assessed Total	Ratio	Year & Remodeled
	\$628 \$0 \$0	\$618,000	\$671,300	\$1,289,300	105%	2007 & NA

Address	Sold Price	Sold Date	Sold Ratio	Original Ratio	Sold Terms
	\$1,360,000	05-27-2021	101%	97%	Conventional

- MLS#: [201932889](#) - Original price was \$1,400,000 - Must See! Newer Bali-Styled Home. Excellent craftsmanship and materials used (Hardwoods, Onyx, Marble, Bamboo, Granite, Travertine and Copper Accents) in gated Custom Built Home. Enjoy ocean views from your private lanais or relax in your lush professionally landscaped yard. Close to "Alligators" white sand beach and Waimea Bay, and a short drive to Historic Haleiwa Town. Located just 2 miles south of Foodland Pupukea and 20 mins south of Turtle Bay Resort. Just bring your beach towel to this turn-key home. **Region:** North Shore
Neighborhood: Kawaihoa-north Shore **Condition:** Excellent **Parking:** Driveway, Garage **Total Parking:** 4 **View:** Coastline, Garden, Mountain, Ocean **Frontage:** **Pool:** None **Zoning:** 05 - R-5 Residential District **Sale Conditions:** None **Schools:** , , *
[Request Showing](#), [Photos](#), [History](#), [Maps](#), [Deed](#), [Watch List](#), [Tax Info](#)

DOM = Days on Market