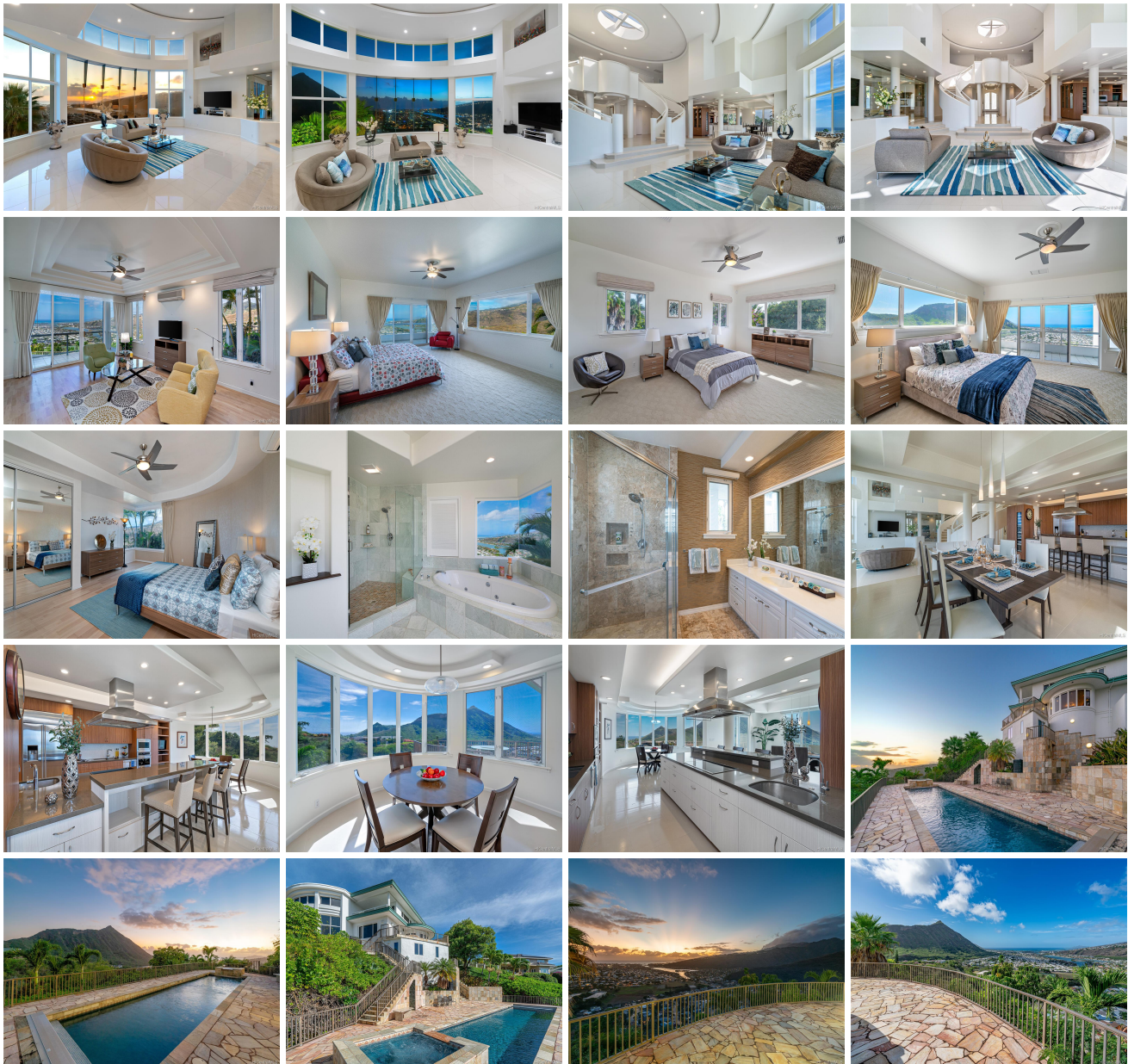


## **114 Hanohano Place, Honolulu 96825 \* \$3,890,000**

Beds: <b>4</b>	MLS#: <b>201933573, FS</b>	Year Built: <b>1994</b>
Bath: <b>4/0</b>	Status: <b>Expired</b>	Remodeled: <b>2004</b>
Living Sq. Ft.: <b>5,128</b>	List Date & DOM: <b>12-03-2019 &amp; 366</b>	Total Parking: <b>4</b>
Land Sq. Ft.: <b>26,690</b>	Condition: <b>Excellent</b>	<a href="#">Assessed Value</a>
Lanai Sq. Ft.: <b>0</b>	Frontage: <b>Other</b>	Building: <b>\$1,788,800</b>
Sq. Ft. Other: <b>0</b>	Tax/Year: <b>\$2,184/2020</b>	Land: <b>\$1,366,400</b>
Total Sq. Ft. <b>5,128</b>	Neighborhood: <b>Napali Haweo</b>	Total: <b>\$3,155,200</b>
Maint./Assoc. <b>\$0 / \$0</b>	<a href="#">Flood Zone</a> : <b>Zone X - Tool</b>	Stories / CPR: <b>Two / No</b>
Parking: <b>2 Car, Driveway, Garage</b>	Frontage: <b>Other</b>	
<a href="#">Zoning</a> : <b>03 - R10 - Residential District</b>	View: <b>City, Diamond Head, Mountain, Ocean</b>	

**Public Remarks:** Panoramic Ocean, Marina, Koko Head and Diamond Head view estate on beautiful Hawaii Kai hillside. Extremely private residence, where indoor and outdoor luxury await you. Enjoy stunning, vibrant daytime views and romantic, picturesque nighttime views, from soaring ceilings with floor to ceiling glass windows. Main living room with an iconic double staircase, chef's kitchen, spacious dining area, office/den and a guest room are downstairs. Three large bedroom suites with two spacious lanais are upstairs. Enjoy your large private pool and outside dining at the spacious barbecue area with amazing panoramic views both during the day and with beautiful town lights at night. **Sale Conditions:** None **Schools:** [Kamiloiki](#), [Niu Valley](#), [Kaiser](#) \* [Request Showing](#), [Photos](#), [History](#), [Maps](#), [Deed](#), [Watch List](#), [Tax Info](#)





Address	Price	Bd & Bth	Living / Avg.	Land   Avg.	DOM
<a href="#">114 Hanohano Place</a>	<a href="#">\$3,890,000</a>	4 & 4/0	5,128   \$759	26,690   \$146	366

Address	Tax   Maint.   Ass.	Assessed Land	Assessed Building	Assessed Total	Ratio	Year & Remodeled
<a href="#">114 Hanohano Place</a>	\$2,184   \$0   \$0	\$1,366,400	\$1,788,800	\$3,155,200	123%	1994 & 2004

[114 Hanohano Place](#) - MLS#: [201933573](#) - Panoramic Ocean, Marina, Koko Head and Diamond Head view estate on beautiful Hawaii Kai hillside. Extremely private residence, where indoor and outdoor luxury await you. Enjoy stunning, vibrant daytime views and romantic, picturesque nighttime views, from soaring ceilings with floor to ceiling glass windows. Main living room with an iconic double staircase, chef's kitchen, spacious dining area, office/den and a guest room are downstairs. Three large bedroom suites with two spacious lanais are upstairs. Enjoy your large private pool and outside dining at the spacious barbecue area with amazing panoramic views both during the day and with beautiful town lights at night. **Region:** Hawaii Kai **Neighborhood:** Napali Haweo **Condition:** Excellent **Parking:** 2 Car, Driveway, Garage **Total Parking:** 4 **View:** City, Diamond Head, Mountain, Ocean **Frontage:** Other **Pool:** Above Ground, Spa/HotTub **Zoning:** 03 - R10 - Residential District **Sale Conditions:** None **Schools:** [Kamiloiki](#), [Niu Valley](#), [Kaiser](#) \* [Request Showing](#), [Photos](#), [History](#), [Maps](#), [Deed](#), [Watch List](#), [Tax Info](#)

DOM = Days on Market