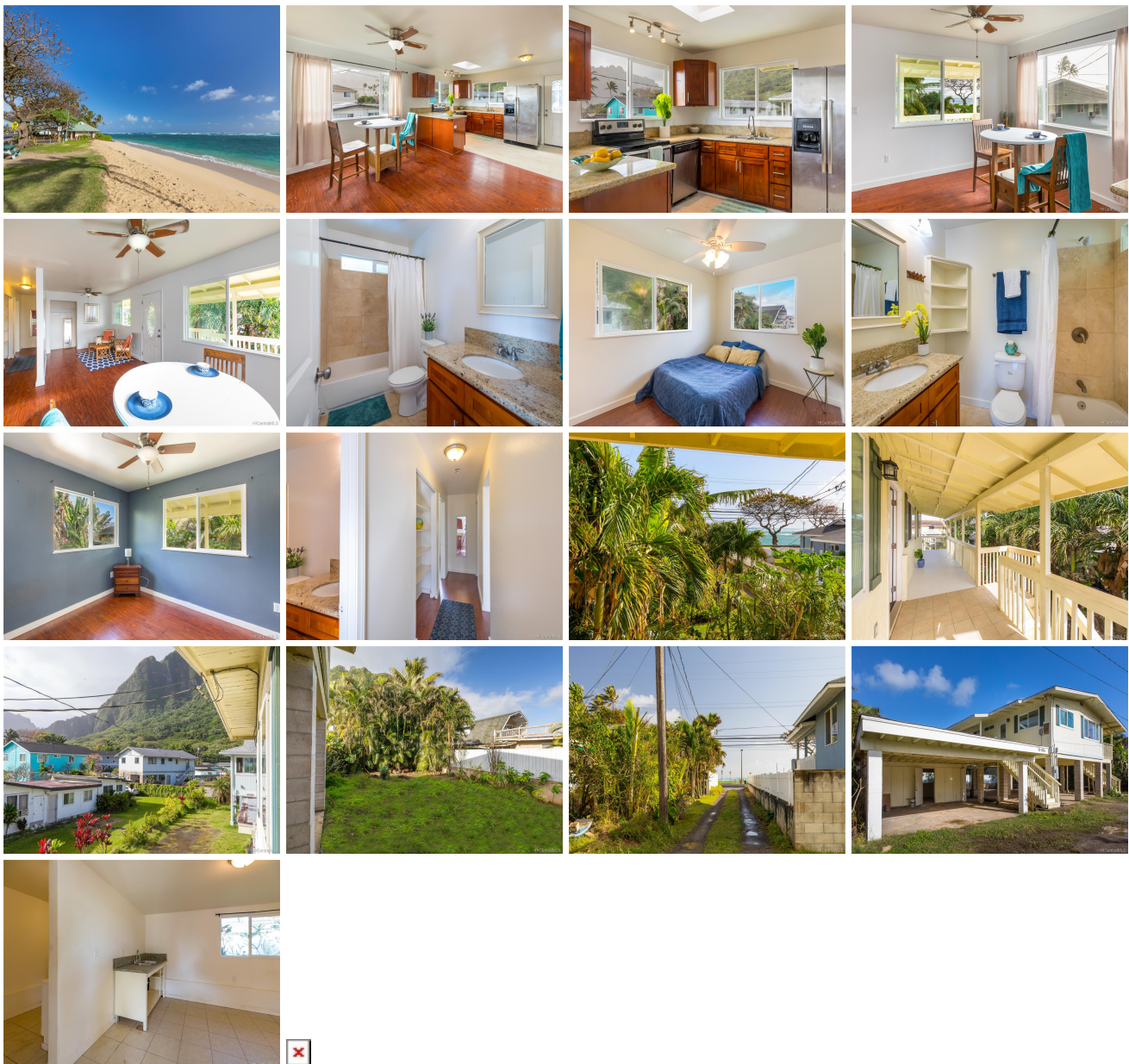


51-328B Kamehameha Highway Unit 1, Kaaawa 96730 * \$688,000

Sold Price: \$662,000	Sold Date: 03-11-2020	Sold Ratio: 96%
Beds: 2	MLS#: 20200541, FS	Year Built: 1964
Bath: 3/0	Status: Sold	Remodeled: 2018
Living Sq. Ft.: 836	List Date & DOM: 01-08-2020 & 14	Total Parking: 5
Land Sq. Ft.: 5,659	Condition: Above Average	Assessed Value
Lanai Sq. Ft.: 0	Frontage:	Building: \$132,100
Sq. Ft. Other: 240	Tax/Year: \$145/2019	Land: \$446,200
Total Sq. Ft. 1,076	Neighborhood: Kaaawa	Total: \$578,300
Maint./Assoc. \$0 / \$0	Flood Zone : Zone VE - Tool	Stories / CPR: One / Yes
Parking: 3 Car+, Carport, Driveway	Frontage:	
Zoning : 05 - R-5 Residential District	View: Mountain, Ocean, Sunrise	

Public Remarks: Breathtaking ocean and mountain views from all rooms in this charming 2/2 steps away from Kaaawa's most beautiful sandy beach. Completely remodeled in 2012 with upgrades added in 2017- 2019 including a large deck to take in the sun and moon rises. This home also includes a detached bonus space with additional full bath to make your office or playroom. Enjoy hiking, diving and surfing just out your front door. Surrounded by the Koolau Mountains and the sea, this peaceful country community is just minutes away from Kaneohe and Honolulu. **Sale Conditions:** None **Schools:** [Kaaawa](#), [Kahuku](#), [Kahuku](#) * [Request Showing](#), [Photos](#), [History](#), [Maps](#), [Deed](#), [Watch List](#), [Tax Info](#)



Address	Price	Bd & Bth	Living / Avg.	Land Avg.	DOM
51-328B Kamehameha Highway 1	\$688,000	2 & 3/0	836 \$823	5,659 \$122	14

Address	Tax Maint. Ass.	Assessed Land	Assessed Building	Assessed Total	Ratio	Year & Remodeled
51-328B Kamehameha Highway 1	\$145 \$0 \$0	\$446,200	\$132,100	\$578,300	119%	1964 & 2018

Address	Sold Price	Sold Date	Sold Ratio	Original Ratio	Sold Terms
51-328B Kamehameha Highway 1	\$662,000	03-11-2020	96%	96%	Conventional

[51-328B Kamehameha Highway 1](#) - MLS#: [202000541](#) - Breathtaking ocean and mountain views from all rooms in this charming 2/2 steps away from Kaaawa's most beautiful sandy beach. Completely remodeled in 2012 with upgrades added in 2017- 2019 including a large deck to take in the sun and moon rises. This home also includes a detached bonus space with additional full bath to make your office or playroom. Enjoy hiking, diving and surfing just out your front door. Surrounded by the Koolau Mountains and the sea, this peaceful country community is just minutes away from Kaneohe and Honolulu.

Region: Kaneohe **Neighborhood:** Kaaawa **Condition:** Above Average **Parking:** 3 Car+, Carport, Driveway **Total Parking:** 5 **View:** Mountain, Ocean, Sunrise **Frontage:** **Pool:** None **Zoning:** 05 - R-5 Residential District **Sale Conditions:** None
Schools: [Kaaawa](#), [Kahuku](#), [Kahuku](#) * [Request Showing](#), [Photos](#), [History](#), [Maps](#), [Deed](#), [Watch List](#), [Tax Info](#)

DOM = Days on Market