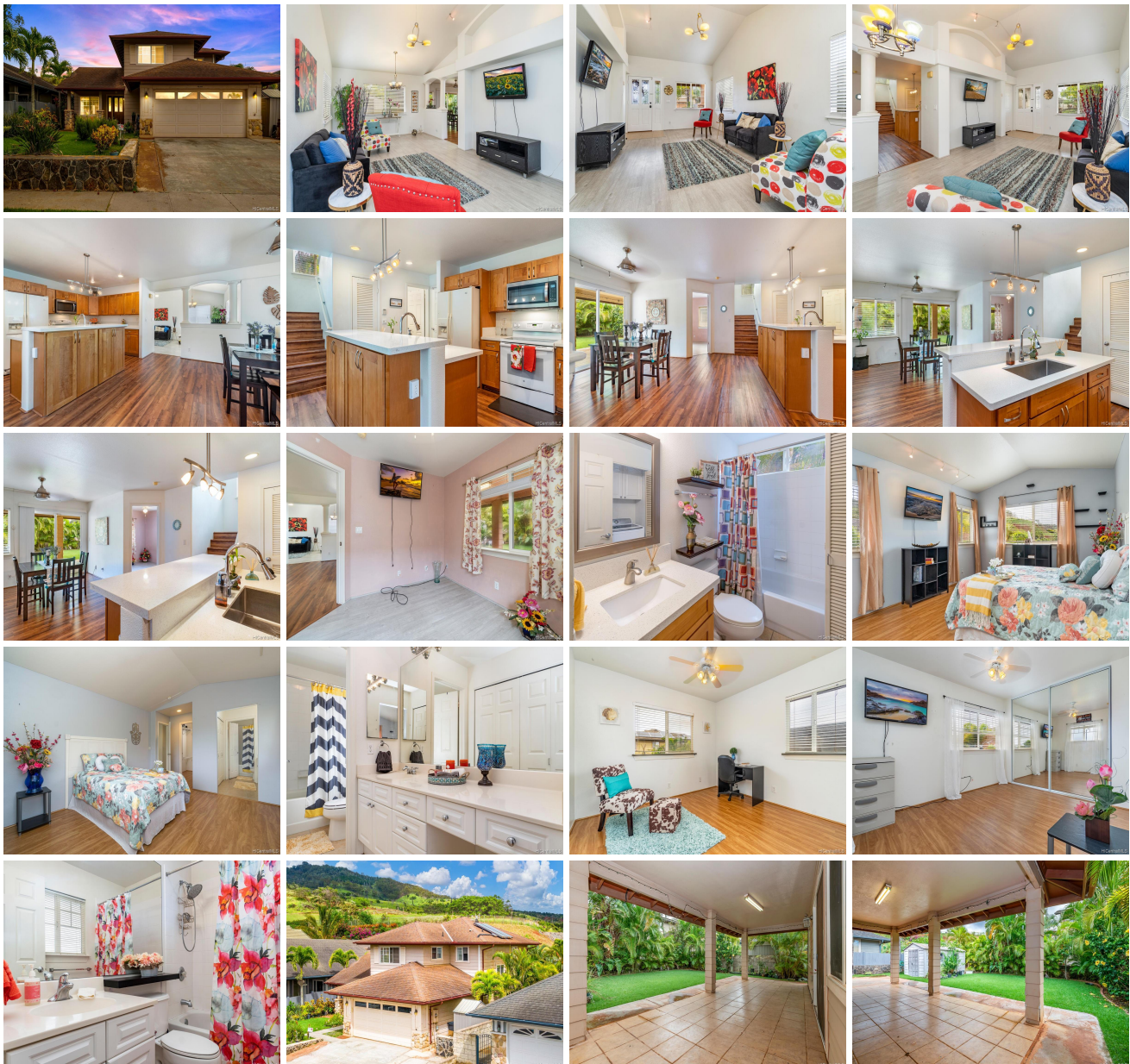
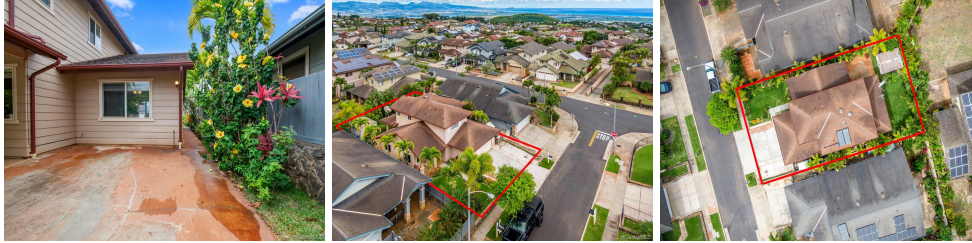


92-105 Waiko Place, Kapolei 96707 * \$799,000

Sold Price: \$799,000	Sold Date: 03-02-2020	Sold Ratio: 100%
Beds: 4	MLS#: 202001438, FS	Year Built: 2003
Bath: 3/0	Status: Sold	Remodeled:
Living Sq. Ft.: 1,752	List Date & DOM: 01-22-2020 & 4	Total Parking: 2
Land Sq. Ft.: 5,065	Condition: Above Average	Assessed Value
Lanai Sq. Ft.: 240	Frontage: Other	Building: \$368,700
Sq. Ft. Other: 65	Tax/Year: \$202/2019	Land: \$450,600
Total Sq. Ft. 2,057	Neighborhood: Makakilo-highpointe	Total: \$819,300
Maint./Assoc. \$0 / \$10	Flood Zone : Zone D - Tool	Stories / CPR: Two / No
Parking: 2 Car, Driveway, Garage	Frontage: Other	
Zoning : 05 - R-5 Residential District	View: Mountain	

Public Remarks: Developed by D.R. Horton-Schuler homes and designed by world renowned architects KY international based in Honolulu , Makakilo Highpointe Oahu Island, Hawaii On the foothills of the Waianae mountain range, the Highpointe development encompasses over 400 single family homes spread across 12 one and two story model types. This gorgeous Cantata model offers a ground bedroom with newly renovated kitchen with new counter tops, island, cabinets , wood laminate flooring on lower level, full bathroom and living and dining area , on second level you will find 3 bedrooms and 2 full bathrooms with well sized master bedroom, all surrounded by lush greenery with this tropical landscaping. A definite must see to appreciate. **Sale Conditions:** None **Schools:** [Barbers Point](#), [Kapolei](#), [Kapolei](#) * [Request Showing](#), [Photos](#), [History](#), [Maps](#), [Deed](#), [Watch List](#), [Tax Info](#)





Address	Price	Bd & Bth	Living / Avg.	Land Avg.	DOM
92-105 Waiko Place	\$799,000	4 & 3/0	1,752 \$456	5,065 \$158	4

Address	Tax Maint. Ass.	Assessed Land	Assessed Building	Assessed Total	Ratio	Year & Remodeled
92-105 Waiko Place	\$202 \$0 \$10	\$450,600	\$368,700	\$819,300	98%	2003 & NA

Address	Sold Price	Sold Date	Sold Ratio	Original Ratio	Sold Terms
92-105 Waiko Place	\$799,000	03-02-2020	100%	100%	VA

[92-105 Waiko Place](#) - MLS#: [202001438](#) - Developed by D.R. Horton-Schuler homes and designed by world renowned architects KY international based in Honolulu , Makakilo Highpointe Oahu Island, Hawaii On the foothills of the Waianae mountain range, the Highpointe development encompasses over 400 single family homes spread across 12 one and two story model types. This gorgeous Cantata model offers a ground bedroom with newly renovated kitchen with new counter tops, island, cabinets , wood laminate flooring on lower level, full bathroom and living and dining area , on second level you will find 3 bedrooms and 2 full bathrooms with well sized master bedroom, all surrounded by lush greenery with this tropical landscaping. A definite must see to appreciate. **Region:** Makakilo **Neighborhood:** Makakilo-highpointe **Condition:** Above Average **Parking:** 2 Car, Driveway, Garage **Total Parking:** 2 **View:** Mountain **Frontage:** Other **Pool:** None **Zoning:** 05 - R-5 Residential District **Sale Conditions:** None **Schools:** [Barbers Point](#), [Kapolei](#), [Kapolei](#) * [Request Showing](#), [Photos](#), [History](#), [Maps](#), [Deed](#), [Watch List](#), [Tax Info](#)

DOM = Days on Market