

**91-1067 Kanela Street Unit T-30, Ewa Beach 96706 \* \$639,000 \* Originally \$0**

Sold Price: \$640,000

Sold Date: 02-26-2020

Sold Ratio: 100%

Beds: **4**

MLS#: **202001491**, FS

Year Built: **2005**

Bath: **2/1**

Status: **Sold**

Remodeled:

Living Sq. Ft.: **1,538**

List Date & DOM: **01-27-2020 & 7**

Total Parking: **3**

Land Sq. Ft.: **1,162**

Condition: **Above Average**

[Assessed Value](#)

Lanai Sq. Ft.: **173**

Frontage:

Building: **\$308,200**

Sq. Ft. Other: **0**

Tax/Year: **\$165/2020**

Land: **\$329,900**

Total Sq. Ft. **1,711**

Neighborhood: **Ewa Gen  
Montecito-tuscany**

Total: **\$638,100**

Maint./Assoc. **\$449 / \$39**

[Flood Zone](#): **Zone D - Tool**

Stories / CPR: **Two / Yes**

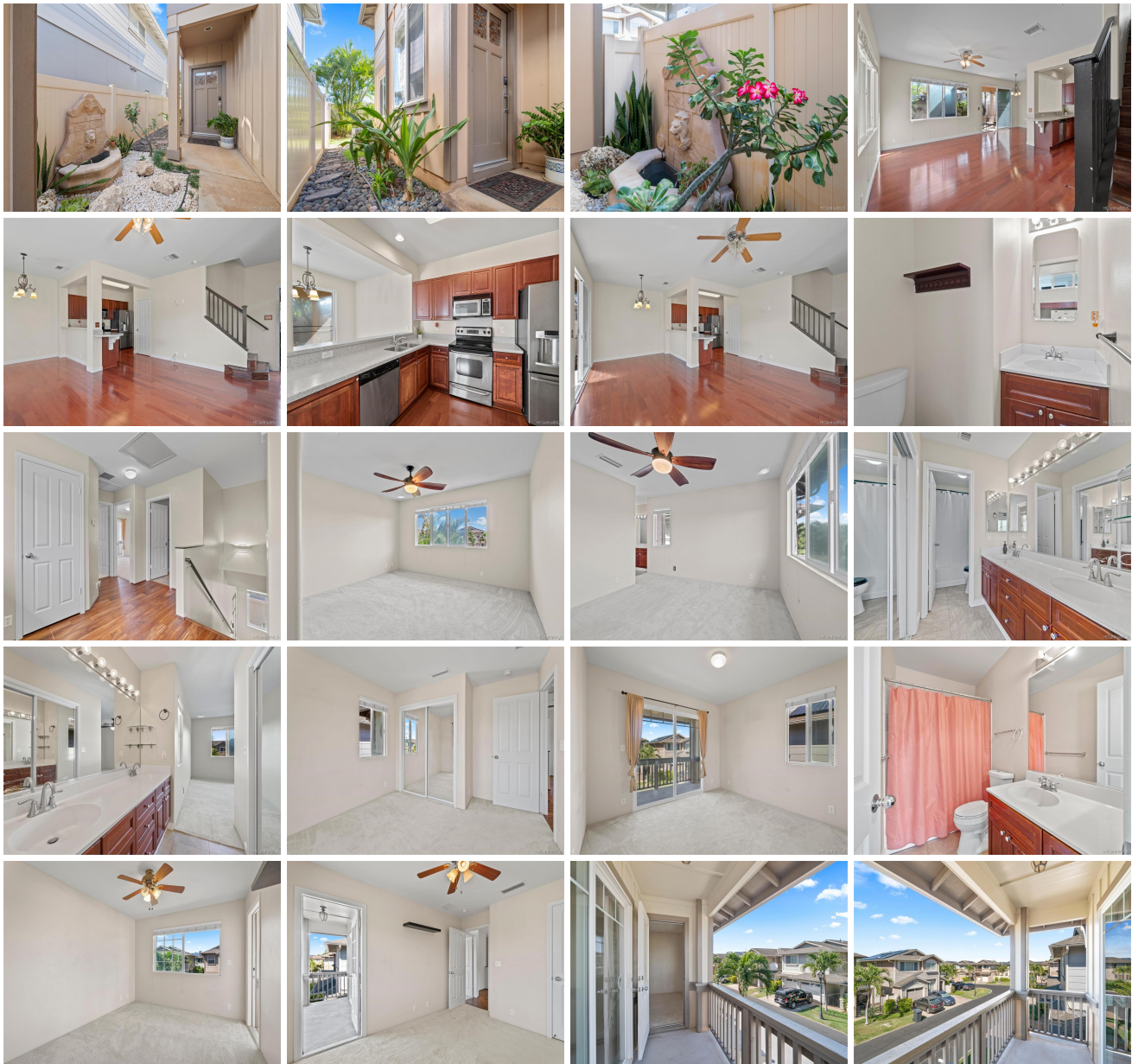
Parking: **2 Car, Driveway**

Frontage:

[Zoning](#): **11 - A-1 Low Density Apartment**

View: **None**

**Public Remarks:** Awesome opportunity to live in the beautiful and well-maintained Montecito/Tuscany community of Ewa. This beautiful and spacious detached home features 4 bedrooms, 2 1/2 baths and a two-car garage with additional space for parking in the driveway. Gorgeous hardwood floors throughout the living spaces create a warm and inviting space. The chef in the family will appreciate the stainless steel appliances in the kitchen. The large covered outdoor area is the perfect place to entertain guests and enjoy the tropical landscaping. The community features a pool and pavilions for entertaining. Just minutes to Laulani Shopping Center and Hawaii Prince Golf Course. Maintenance fee includes water, sewer, and trash. Solar water heater and 19 leased PV panels with 2 batteries. **Sale Conditions:** None **Schools:** [Pohakea](#), [Ilima](#), [Campbell](#) \* [Request Showing](#), [Photos](#), [History](#), [Maps](#), [Deed](#), [Watch List](#), [Tax Info](#)





Address	Price	Bd & Bth	Living / Avg.	Land   Avg.	DOM
<a href="#">91-1067 Kanela Street T-30</a>	<b>\$639,000</b>	4 & 2/1	1,538   \$415	1,162   \$550	7

Address	Tax   Maint.   Ass.	Assessed Land	Assessed Building	Assessed Total	Ratio	Year & Remodeled
<a href="#">91-1067 Kanela Street T-30</a>	\$165   \$449   \$39	\$329,900	\$308,200	\$638,100	100%	2005 & NA

Address	Sold Price	Sold Date	Sold Ratio	Original Ratio	Sold Terms
<a href="#">91-1067 Kanela Street T-30</a>	\$640,000	02-26-2020	100%	0%	VA

[91-1067 Kanela Street T-30](#) - MLS#: [202001491](#) - Original price was \$0 - Awesome opportunity to live in the beautiful and well-maintained Montecito/Tuscany community of Ewa. This beautiful and spacious detached home features 4 bedrooms, 2 1/2 baths and a two-car garage with additional space for parking in the driveway. Gorgeous hardwood floors throughout the living spaces create a warm and inviting space. The chef in the family will appreciate the stainless steel appliances in the kitchen. The large covered outdoor area is the perfect place to entertain guests and enjoy the tropical landscaping. The community features a pool and pavilions for entertaining. Just minutes to Laulani Shopping Center and Hawaii Prince Golf Course. Maintenance fee includes water, sewer, and trash. Solar water heater and 19 leased PV panels with 2 batteries.

**Region:** Ewa Plain **Neighborhood:** Ewa Gen Montecito-tuscany **Condition:** Above Average **Parking:** 2 Car, Driveway **Total Parking:** 3 **View:** None **Frontage:** **Pool:** Community Association Pool **Zoning:** 11 - A-1 Low Density Apartment **Sale Conditions:** None **Schools:** [Pohakea](#), [Ilima](#), [Campbell](#) \* [Request Showing](#), [Photos](#), [History](#), [Maps](#), [Deed](#), [Watch List](#), [Tax Info](#)

DOM = Days on Market