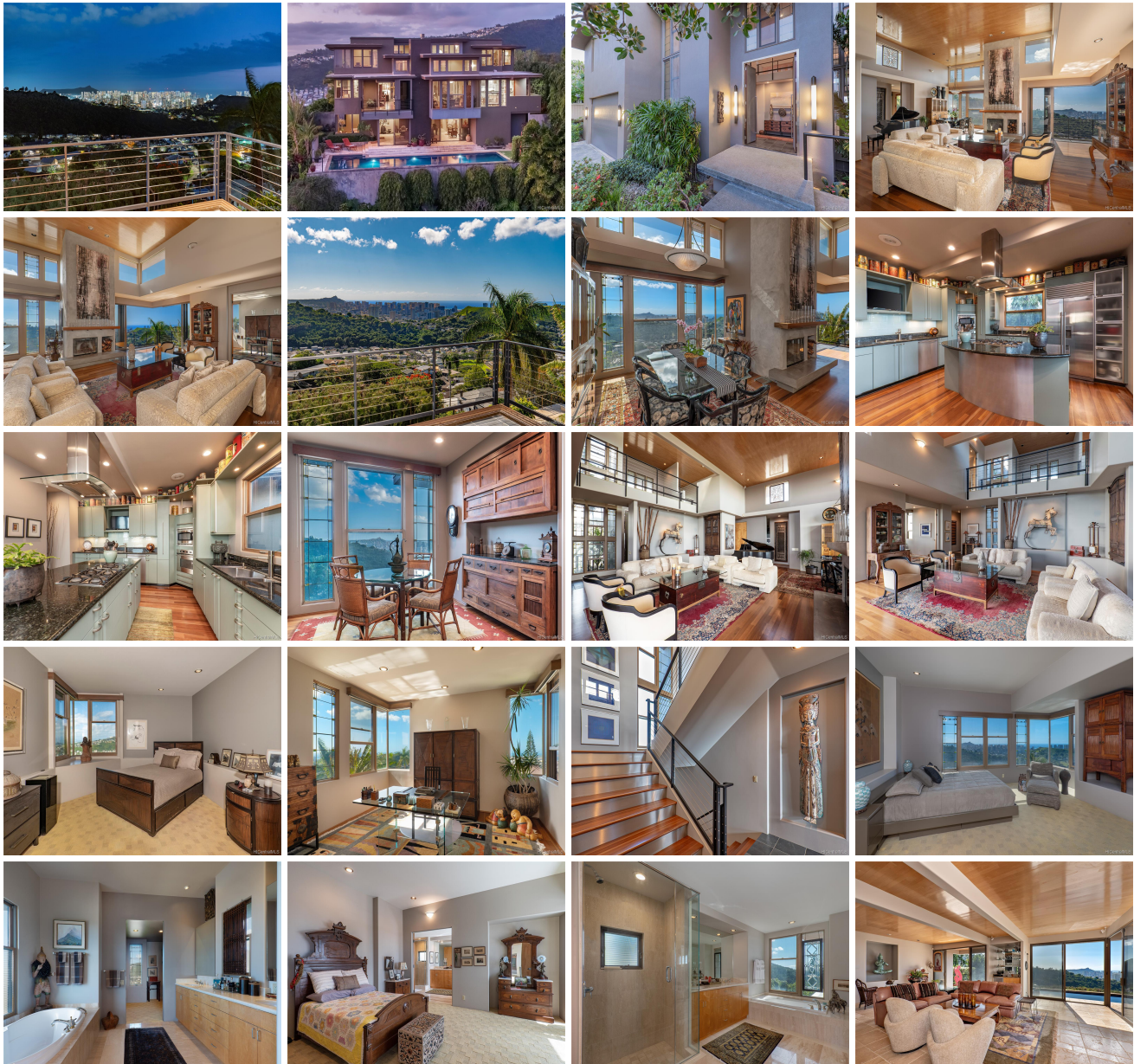


## **2960 Laola Place, Honolulu 96813 \* \$3,250,000**

Sold Price: \$3,150,000	Sold Date: 10-16-2020	Sold Ratio: 97%
Beds: <b>3</b>	MLS#: <b>202001997, FS</b>	Year Built: <b>1999</b>
Bath: <b>3/2</b>	Status: <b>Sold</b>	Remodeled:
Living Sq. Ft.: <b>4,692</b>	List Date & DOM: <b>01-29-2020 &amp; 215</b>	Total Parking: <b>2</b>
Land Sq. Ft.: <b>23,445</b>	Condition: <b>Excellent</b>	<a href="#">Assessed Value</a>
Lanai Sq. Ft.: <b>0</b>	Frontage:	Building: <b>\$1,055,300</b>
Sq. Ft. Other: <b>631</b>	Tax/Year: <b>\$579/2020</b>	Land: <b>\$1,002,600</b>
Total Sq. Ft. <b>5,323</b>	Neighborhood: <b>Pacific Heights</b>	Total: <b>\$2,057,900</b>
Maint./Assoc. <b>\$0 / \$0</b>	<a href="#">Flood Zone</a> : <b>Zone X - Tool</b>	Stories / CPR: <b>Three+ / Yes</b>
Parking: <b>2 Car, Driveway, Garage</b>	Frontage:	
<a href="#">Zoning</a> : <b>03 - R10 - Residential District</b>	View: <b>City, Diamond Head, Garden, Mountain, Ocean, Sunrise, Sunset</b>	

**Public Remarks:** Inspired by Frank Lloyd Wright's masterpiece "Fallingwater," architect Jim Schmit masterfully designed this home toward the focal points of spectacular views! Andersen Art Glass Series windows showcase amazing views spanning from Diamond Head to Pearl Harbor and the Ko'olau Mountains. Ten feet tall Bonded Bronze entry doors lead to the grand two-story living room featuring double cantilevered walls and breathtaking forever views. Australian Chocolate Heart Brushbox hardwood floors, an ASID Award Winning kitchen and clean, elegant architectural lines create a timeless design. The lower level family room with tumbled Travertine floors leads out to a wonderful lanai and lap size pool complete with gorgeous views. Discreetly set back from the street, this extraordinary home offers privacy and a great location with its proximity to Downtown. **Sale Conditions:** None **Schools:** , , \* [Request Showing](#), [Photos](#), [History](#), [Maps](#), [Deed](#), [Watch List](#), [Tax Info](#)





Address	Price	Bd & Bth	Living / Avg.	Land   Avg.	DOM
<a href="#">2960 Laola Place</a>	<a href="#">\$3,250,000</a>	3 & 3/2	4,692   \$693	23,445   \$139	215

Address	Tax   Maint.   Ass.	Assessed Land	Assessed Building	Assessed Total	Ratio	Year & Remodeled
<a href="#">2960 Laola Place</a>	\$579   \$0   \$0	\$1,002,600	\$1,055,300	\$2,057,900	158%	1999 & NA

Address	Sold Price	Sold Date	Sold Ratio	Original Ratio	Sold Terms
<a href="#">2960 Laola Place</a>	\$3,150,000	10-16-2020	97%	97%	Conventional

[2960 Laola Place](#) - MLS#: [202001997](#) - Inspired by Frank Lloyd Wright's masterpiece "Fallingwater," architect Jim Schmit masterfully designed this home toward the focal points of spectacular views! Andersen Art Glass Series windows showcase amazing views spanning from Diamond Head to Pearl Harbor and the Ko'olau Mountains. Ten feet tall Bonded Bronze entry doors lead to the grand two-story living room featuring double cantilevered walls and breathtaking forever views. Australian Chocolate Heart Brushbox hardwood floors, an ASID Award Winning kitchen and clean, elegant architectural lines create a timeless design. The lower level family room with tumbled Travertine floors leads out to a wonderful lanai and lap size pool complete with gorgeous views. Discreetly set back from the street, this extraordinary home offers privacy and a great location with its proximity to Downtown. **Region:** Metro **Neighborhood:** Pacific Heights **Condition:** Excellent **Parking:** 2 Car, Driveway, Garage **Total Parking:** 2 **View:** City, Diamond Head, Garden, Mountain, Ocean, Sunrise, Sunset **Frontage:** **Pool:** In Ground, Tile **Zoning:** 03 - R10 - Residential District **Sale Conditions:** None **Schools:** , , \* [Request Showing](#), [Photos](#), [History](#), [Maps](#), [Deed](#), [Watch List](#), [Tax Info](#)

DOM = Days on Market