

47-377 Kamehameha Highway Unit B1, Kaneohe 96744 * \$769,000 * Originally \$0

Sold Price: \$780,000

Beds: **3**

Bath: **2/0**

Living Sq. Ft.: **1,024**

Land Sq. Ft.: **6,314**

Lanai Sq. Ft.: **132**

Sq. Ft. Other: **0**

Total Sq. Ft. **1,156**

Maint./Assoc. **\$0 / \$0**

Parking: **3 Car+**

Zoning: 05 - R-5 Residential District

Sold Date: 04-02-2020

MLS#: **202002986, FS**

Status: **Sold**

List Date & DOM: **02-27-2020 & 4**

Condition: **Average**

Frontage:

Tax/Year: **\$0/2019**

Neighborhood: **Kam Hwy Makai**

Flood Zone: Zone D - Tool

Frontage:

View: **Garden**

Sold Ratio: 101%

Year Built: **1962**

Remodeled: **1987**

Total Parking: **3**

Assessed Value

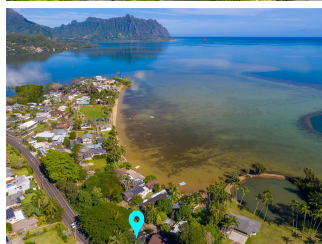
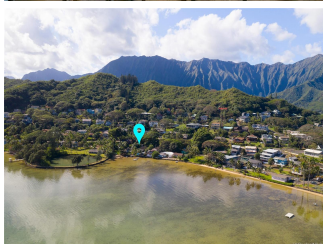
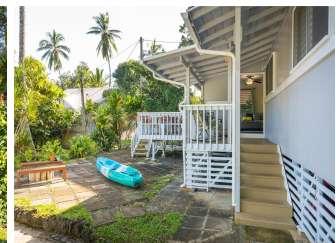
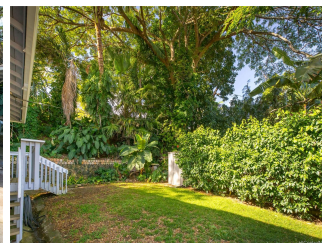
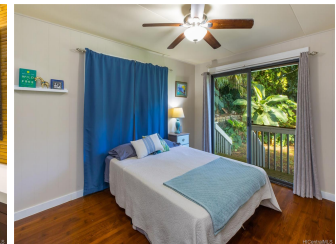
Building: **\$210,300**

Land: **\$458,300**

Total: **\$668,600**

Stories / CPR: **One / Yes**

Public Remarks: Cozy, laid back and charming beach bungalow in move-in condition. Enjoy this single family home that is big on indoor/outdoor living with large patio off the living room with beautiful original hardwood floors inside. You will love the built ins, storage and floor plan that features updated baths and large yard with tropical landscaping. Located one house from the ocean where you can paddle to the famous Kaneohe Sandbar or a quick walk to the beach park. Perfect for water lovers! Great for pets. You can see China Man's Hat, and a glimpse of water from the top of the drive way, or build up to wake up to one every day! The possibilities are endless. Central Location enjoy a 30 minute commute to Pearl Harbor, 10 mins. to Windward Mall, 25 mins to Kailua Beach. **Sale Conditions:** None **Schools:** [Kahaluu](#), [King](#), [Castle](#) * [Request Showing](#), [Photos](#), [History](#), [Maps](#), [Deed](#), [Watch List](#), [Tax Info](#)





Address	Price	Bd & Bth	Living / Avg.	Land Avg.	DOM
47-377 Kamehameha Highway B1	\$769,000	3 & 2/0	1,024 \$751	6,314 \$122	4

Address	Tax Maint. Ass.	Assessed Land	Assessed Building	Assessed Total	Ratio	Year & Remodeled
47-377 Kamehameha Highway B1	\$0 \$0 \$0	\$458,300	\$210,300	\$668,600	115%	1962 & 1987

Address	Sold Price	Sold Date	Sold Ratio	Original Ratio	Sold Terms
47-377 Kamehameha Highway B1	\$780,000	04-02-2020	101%	0%	VA 3500

[47-377 Kamehameha Highway B1](#) - MLS#: [202002986](#) - Original price was \$0 - Cozy, laid back and charming beach bungalow in move-in condition. Enjoy this single family home that is big on indoor/outdoor living with large patio off the living room with beautiful original hardwood floors inside. You will love the built ins, storage and floor plan that features updated baths and large yard with tropical landscaping. Located one house from the ocean where you can paddle to the famous Kaneohe Sandbar or a quick walk to the beach park. Perfect for water lovers! Great for pets. You can see China Man's Hat, and a glimpse of water from the top of the drive way, or build up to wake up to one every day! The possibilities are endless. Central Location enjoy a 30 minute commute to Pearl Harbor, 10 mins. to Windward Mall, 25 mins to Kailua Beach.

Region: Kaneohe **Neighborhood:** Kam Hwy Makai **Condition:** Average **Parking:** 3 Car+ **Total Parking:** 3 **View:** Garden **Frontage:** **Pool:** None **Zoning:** 05 - R-5 Residential District **Sale Conditions:** None **Schools:** [Kahaluu](#), [King](#), [Castle](#) *

[Request Showing](#), [Photos](#), [History](#), [Maps](#), [Deed](#), [Watch List](#), [Tax Info](#)

DOM = Days on Market