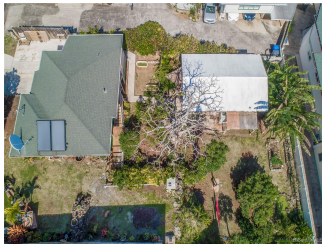


2621 Liliha Street, Honolulu 96817 * \$899,000

Sold Price: \$880,000	Sold Date: 05-06-2020	Sold Ratio: 98%
Beds: 3	MLS#: <u>202003394</u>, FS	Year Built: 1930
Bath: 2/0	Status: Sold	Remodeled:
Living Sq. Ft.: 1,101	List Date & DOM: 02-14-2020 & 9	Total Parking: 2
Land Sq. Ft.: 8,062	Condition: Above Average, Average, Fair	Assessed Value
Lanai Sq. Ft.: 0	Frontage:	Building: \$267,300
Sq. Ft. Other: 0	Tax/Year: \$0/2020	Land: \$950,200
Total Sq. Ft. 1,101	Neighborhood: Puunui	Total: \$1,217,500
Maint./Assoc. \$0 / \$0	Flood Zone : Zone X - Tool	Stories / CPR: One / No
Parking: 2 Car, Driveway	Frontage:	
Zoning : 05 - R-5 Residential District	View: City, Ocean	

Public Remarks: Welcome to Puunui, located just minutes from downtown and the Pali highway! With 2 homes on a 8062sqft lot, the options are unlimited! Whether you want to live in one and rent the other, have your parents move in with you while having their own space, or even rebuild from the ground up, the possibilities are endless! And with it so close to Maemae Elementary, the keiki can go to school right near by! Relax after a long days work and enjoy the ocean and downtown views. Call your favorite Realtor today to schedule a showing! Please do not walk on property without the listing agent present. **Sale Conditions:** None **Schools:** , , * [Request Showing](#), [Photos](#), [History](#), [Maps](#), [Deed](#), [Watch List](#), [Tax Info](#)





Address	Price	Bd & Bth	Living / Avg.	Land Avg.	DOM
2621 Liliha Street	\$899,000	3 & 2/0	1,101 \$817	8,062 \$112	9

Address	Tax Maint. Ass.	Assessed Land	Assessed Building	Assessed Total	Ratio	Year & Remodeled
2621 Liliha Street	\$0 \$0 \$0	\$950,200	\$267,300	\$1,217,500	74%	1930 & NA

Address	Sold Price	Sold Date	Sold Ratio	Original Ratio	Sold Terms
2621 Liliha Street	\$880,000	05-06-2020	98%	98%	Conventional

[2621 Liliha Street](#) - MLS#: [202003394](#) - Welcome to Puunui, located just minutes from downtown and the Pali highway! With 2 homes on a 8062sqft lot, the options are unlimited! Whether you want to live in one and rent the other, have your parents move in with you while having their own space, or even rebuild from the ground up, the possibilities are endless! And with it so close to Maemae Elementary, the keiki can go to school right near by! Relax after a long days work and enjoy the ocean and downtown views. Call your favorite Realtor today to schedule a showing! Please do not walk on property without the listing agent present. **Region:** Metro **Neighborhood:** Puunui **Condition:** Above Average, Average, Fair **Parking:** 2 Car, Driveway **Total Parking:** 2 **View:** City, Ocean **Frontage:** **Pool:** Above Ground,Spa/HotTub **Zoning:** 05 - R-5 Residential District **Sale Conditions:** None **Schools:** , , * [Request Showing](#), [Photos](#), [History](#), [Maps](#), [Deed](#), [Watch List](#), [Tax Info](#)

DOM = Days on Market