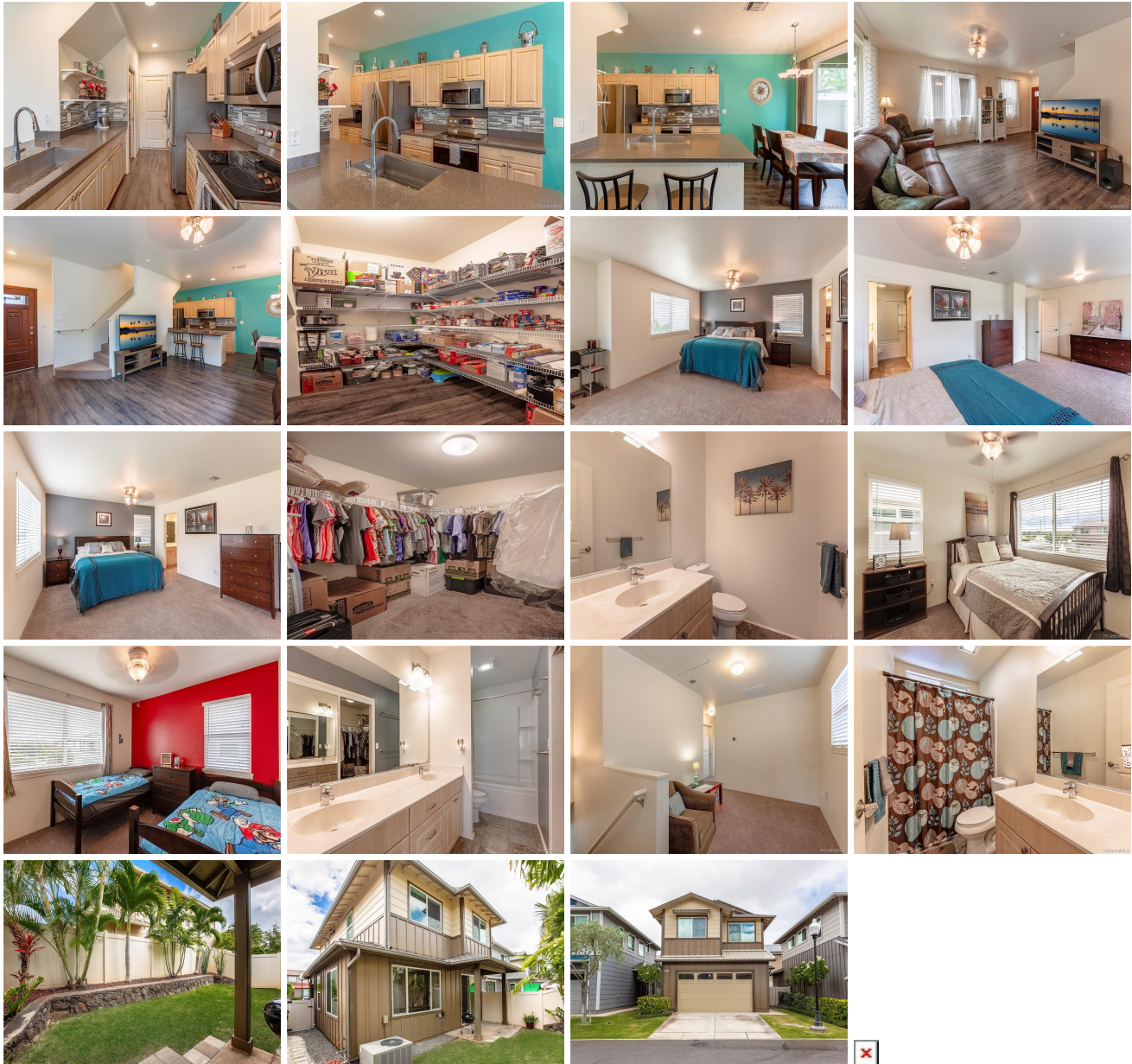


**91-6221 Kapolei Parkway Unit 20, Ewa Beach 96706 \* \$695,000**

Sold Price: \$695,000	Sold Date: 05-22-2020	Sold Ratio: 100%
Beds: <b>3</b>	MLS#: <b>202005197, FS</b>	Year Built: <b>2014</b>
Bath: <b>2/1</b>	Status: <b>Sold</b>	Remodeled:
Living Sq. Ft.: <b>1,526</b>	List Date & DOM: <b>03-11-2020 &amp; 5</b>	Total Parking: <b>4</b>
Land Sq. Ft.: <b>3,915</b>	Condition: <b>Above Average, Excellent</b>	<a href="#">Assessed Value</a>
Lanai Sq. Ft.: <b>30</b>	Frontage: <b>Other</b>	Building: <b>\$337,200</b>
Sq. Ft. Other: <b>0</b>	Tax/Year: <b>\$172/2020</b>	Land: <b>\$332,900</b>
Total Sq. Ft. <b>1,556</b>	Neighborhood: <b>Ewa Gen Parkside</b>	Total: <b>\$670,100</b>
Maint./Assoc. <b>\$350 / \$39</b>	<a href="#">Flood Zone</a> : <b>Zone D - Tool</b>	Stories / CPR: <b>Two / Yes</b>
Parking: <b>3 Car+</b>	Frontage: <b>Other</b>	
<a href="#">Zoning</a> : <b>11 - A-1 Low Density Apartment</b>	View: <b>Garden, Other</b>	

**Public Remarks:** Gorgeous 3 bedroom 2.5 bath home with extra large master suite single family home at Parkside in Ewa. Central air conditioning and photo-voltaic panels, NEST system, finished garage, upgraded appliances, large pantry, landscaped yard with sprinkler system. Four car parking with lots of guest parking. This home is located at the end of a cul-de-sac which gives you extra privacy. Enjoy the community pool, walk to nearby parks. Close to several military bases, hospitals, and federal buildings. Maintenance fee of \$350 includes water, sewer, trash pickup, pools and more. Set up your private showing today. **Sale Conditions:** None **Schools:** [Keoneula](#), [Ewa Makai](#), [Campbell](#) \* [Request Showing](#), [Photos](#), [History](#), [Maps](#), [Deed](#), [Watch List](#), [Tax Info](#)



Address	Price	Bd & Bth	Living / Avg.	Land   Avg.	DOM
<a href="#">91-6221 Kapolei Parkway 20</a>	<a href="#">\$695,000</a>	3 & 2/1	1,526   \$455	3,915   \$178	5

Address	Tax   Maint.   Ass.	Assessed Land	Assessed Building	Assessed Total	Ratio	Year & Remodeled
<a href="#">91-6221 Kapolei Parkway 20</a>	\$172   \$350   \$39	\$332,900	\$337,200	\$670,100	104%	2014 & NA

Address	Sold Price	Sold Date	Sold Ratio	Original Ratio	Sold Terms
<a href="#">91-6221 Kapolei Parkway 20</a>	\$695,000	05-22-2020	100%	100%	Cash

[91-6221 Kapolei Parkway 20](#) - MLS#: [202005197](#) - Gorgeous 3 bedroom 2.5 bath home with extra large master suite single family home at Parkside in Ewa. Central air conditioning and photo-voltaic panels, NEST system, finished garage, upgraded appliances, large pantry, landscaped yard with sprinkler system. Four car parking with lots of guest parking. This home is located at the end of a cul-de-sac which gives you extra privacy. Enjoy the community pool, walk to nearby parks. Close to several military bases, hospitals, and federal buildings. Maintenance fee of \$350 includes water, sewer, trash pickup, pools and more. Set up your private showing today. **Region:** Ewa Plain **Neighborhood:** Ewa Gen Parkside **Condition:** Above Average, Excellent **Parking:** 3 Car+ **Total Parking:** 4 **View:** Garden, Other **Frontage:** Other **Pool:** In Ground **Zoning:** 11 - A-1 Low Density Apartment **Sale Conditions:** None **Schools:** [Keoneula](#), [Ewa Makai](#), [Campbell](#) \* [Request Showing](#), [Photos](#), [History](#), [Maps](#), [Deed](#), [Watch List](#), [Tax Info](#)

DOM = Days on Market