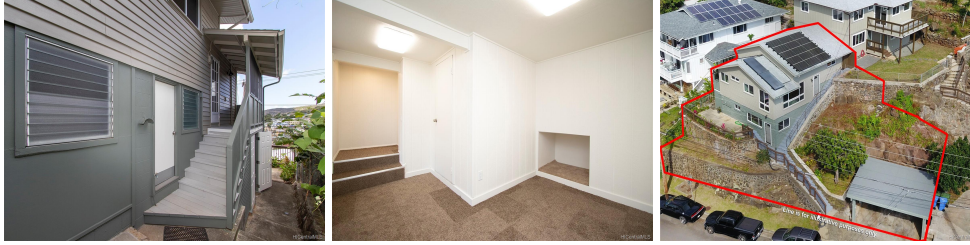


1905 Naio Street Unit 1, Honolulu 96817 * \$838,000

| | | |
|---|---|--|
| Sold Price: \$830,000 | Sold Date: 08-17-2020 | Sold Ratio: 99% |
| Beds: 4 | MLS#: 202007175, FS | Year Built: 1976 |
| Bath: 3/0 | Status: Sold | Remodeled: 2019 |
| Living Sq. Ft.: 1,436 | List Date & DOM: 03-27-2020 & 89 | Total Parking: 2 |
| Land Sq. Ft.: 3,626 | Condition: Excellent | Assessed Value |
| Lanai Sq. Ft.: 48 | Frontage: | Building: \$127,900 |
| Sq. Ft. Other: 0 | Tax/Year: \$0/2020 | Land: \$670,500 |
| Total Sq. Ft. 1,484 | Neighborhood: Kamehameha Heights | Total: \$798,400 |
| Maint./Assoc. \$12 / \$0 | Flood Zone : Zone X - Tool | Stories / CPR: Two, Split Level / Yes |
| Parking: 2 Car, Carport, Street | Frontage: | |
| Zoning : 05 - R-5 Residential District | View: City, Mountain, Ocean | |

Public Remarks: FEELS LIKE NEW!! Enjoy beautiful panoramic ocean, city and mountain views from this beautifully renovated 4 bdrm/3 bath CPR residence situated on a corner lot in the SUPER CONVENIENT Kamehameha Heights neighborhood. You'll appreciate the tasteful finishes including brand new cabinets, quartz countertops, an open kitchen with stainless steel appliances, and an owned photovoltaic system with net metering agreement. The flexibility of having a separate living area downstairs with its own entrance, wet bar, and full bath is ideal for extended family living. Located just minutes from Kamehameha Shopping Center, it makes visiting restaurants, shopping, and entertainment a breeze. **Sale Conditions:** None **Schools:** [Lanakila](#), [Kawananakoa](#), [Mckinley](#) * [Request Showing](#), [Photos](#), [History](#), [Maps](#), [Deed](#), [Watch List](#), [Tax Info](#)





| Address | Price | Bd & Bth | Living / Avg. | Land Avg. | DOM |
|------------------------------------|---------------------------|----------|---------------|---------------|-----|
| 1905 Naio Street 1 | \$838,000 | 4 & 3/0 | 1,436 \$584 | 3,626 \$231 | 89 |

| Address | Tax Maint. Ass. | Assessed Land | Assessed Building | Assessed Total | Ratio | Year & Remodeled |
|------------------------------------|---------------------|---------------|-------------------|----------------|-------|------------------|
| 1905 Naio Street 1 | \$0 \$12 \$0 | \$670,500 | \$127,900 | \$798,400 | 105% | 1976 & 2019 |

| Address | Sold Price | Sold Date | Sold Ratio | Original Ratio | Sold Terms |
|------------------------------------|------------|------------|------------|----------------|--------------|
| 1905 Naio Street 1 | \$830,000 | 08-17-2020 | 99% | 99% | Conventional |

| | | | | | |
|---|--|--|--|--|--|
| <p>1905 Naio Street 1 - MLS#: 202007175 - FEELS LIKE NEW!! Enjoy beautiful panoramic ocean, city and mountain views from this beautifully renovated 4 bdrm/3 bath CPR residence situated on a corner lot in the SUPER CONVENIENT Kamehameha Heights neighborhood. You'll appreciate the tasteful finishes including brand new cabinets, quartz countertops, an open kitchen with stainless steel appliances, and an owned photovoltaic system with net metering agreement. The flexibility of having a separate living area downstairs with its own entrance, wet bar, and full bath is ideal for extended family living. Located just minutes from Kamehameha Shopping Center, it makes visiting restaurants, shopping, and entertainment a breeze. Region: Metro Neighborhood: Kamehameha Heights Condition: Excellent Parking: 2 Car, Carport, Street Total Parking: 2 View: City, Mountain, Ocean Frontage: Pool: None Zoning: 05 - R-5 Residential District Sale Conditions: None Schools: Lanakila, Kawananakoa, Mckinley * Request Showing, Photos, History, Maps, Deed, Watch List, Tax Info</p> | | | | | |
|---|--|--|--|--|--|

DOM = Days on Market