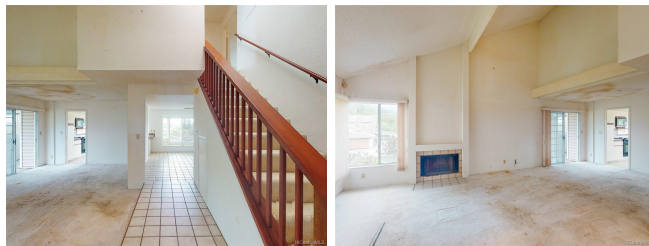


47-136 Nukupuu Place, Kaneohe 96744 * \$715,000

Sold Price: \$785,000	Sold Date: 06-03-2020	Sold Ratio: 110%
Beds: 4	MLS#: 202009255 , FS	Year Built: 1985
Bath: 3/0	Status: Sold	Remodeled:
Living Sq. Ft.: 2,046	List Date & DOM: 05-01-2020 & 12	Total Parking: 2
Land Sq. Ft.: 7,632	Condition: Fair, Needs Major Repair	Assessed Value
Lanai Sq. Ft.: 168	Frontage:	Building: \$358,000
Sq. Ft. Other: 0	Tax/Year: \$283/2019	Land: \$602,600
Total Sq. Ft. 2,214	Neighborhood: Ahuimanu Hills	Total: \$960,600
Maint./Assoc. \$0 / \$0	Flood Zone : Zone D - Tool	Stories / CPR: Two / No
Parking: 2 Car, Driveway, Garage, Street	Frontage:	
Zoning : 04 - R-7.5 Residential District	View: Mountain	

Public Remarks: GET A HOSTED TOUR LIVE FROM YOUR COMPUTER! VIRTUAL OPEN HOUSES THIS WEEK THURSDAY AT 9:30 AM AND SUNDAY AT 3:30 PM (HST) ON FACEBOOK. CLICK THE OPEN HOUSE ICON FOR MORE INFO! Enjoy stunning views across Ahuimanu and up the Koolau cliffs from this ridge home! Four-bedrooms and three-bathrooms spread out over two stories, with one bedroom on the main floor and master suite upstairs. A fully-enclosed garage and attached office complete this floorplan, and make it a perfect spot to call home! Come bring your contractor or your imagination and see what potential this place has in-store! **Sale Conditions:** None **Schools:** [Ahuimanu](#), [King](#), [Castle](#) * [Request Showing](#), [Photos](#), [History](#), [Maps](#), [Deed](#), [Watch List](#), [Tax Info](#)



Address	Price	Bd & Bth	Living / Avg.	Land Avg.	DOM
47-136 Nukupuu Place	\$715,000	4 & 3/0	2,046 \$349	7,632 \$94	12

Address	Tax Maint. Ass.	Assessed Land	Assessed Building	Assessed Total	Ratio	Year & Remodeled
47-136 Nukupuu Place	\$283 \$0 \$0	\$602,600	\$358,000	\$960,600	74%	1985 & NA

Address	Sold Price	Sold Date	Sold Ratio	Original Ratio	Sold Terms
47-136 Nukupuu Place	\$785,000	06-03-2020	110%	110%	Cash

[47-136 Nukupuu Place](#) - MLS#: [202009255](#) - GET A HOSTED TOUR LIVE FROM YOUR COMPUTER! VIRTUAL OPEN HOUSES THIS WEEK THURSDAY AT 9:30 AM AND SUNDAY AT 3:30 PM (HST) ON FACEBOOK. CLICK THE OPEN HOUSE ICON FOR MORE INFO! Enjoy stunning views across Ahuimanu and up the Koolau cliffs from this ridge home! Four-bedrooms and three-bathrooms spread out over two stories, with one bedroom on the main floor and master suite upstairs. A fully-enclosed garage and attached office complete this floorplan, and make it a perfect spot to call home! Come bring your contractor or your imagination and see what potential this place has in-store! **Region:** Kaneohe **Neighborhood:** Ahuimanu Hills **Condition:** Fair, Needs Major Repair **Parking:** 2 Car, Driveway, Garage, Street **Total Parking:** 2 **View:** Mountain **Frontage:** Pool: None **Zoning:** 04 - R-7.5 Residential District **Sale Conditions:** None **Schools:** [Ahuimanu](#), [King](#), [Castle](#) * [Request Showing](#), [Photos](#), [History](#), [Maps](#), [Deed](#), [Watch List](#), [Tax Info](#)

DOM = Days on Market