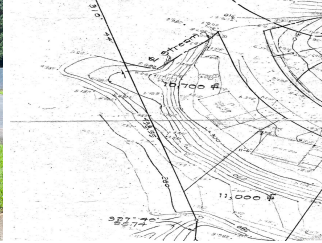


Kahaluu Hillside 47-722J Ahuimanu Loop Unit 7, Kaneohe 96744 * \$839,000 * Originally \$859,000

Sold Price: \$839,000	Sold Date: 08-11-2020	Sold Ratio: 100%
Beds: 3	MLS#: <u>202009329</u>, FS	Year Built: 1963
Bath: 2/0	Status: Sold	Remodeled: 1983
Living Sq. Ft.: 1,468	List Date & DOM: 05-04-2020 & 57	Total Parking: 2
Land Sq. Ft.: 10,700	Condition: Above Average	Assessed Value
Lanai Sq. Ft.: 72	Frontage: Other	Building: \$227,100
Sq. Ft. Other: 36	Tax/Year: \$233/2019	Land: \$651,200
Total Sq. Ft. 1,576	Neighborhood: Temple Valley	Total: \$878,300
Maint./Assoc. \$0 / \$139	Flood Zone : Zone D - Tool	Stories / CPR: One / Yes
Parking: 1 Car, Street	Frontage: Other	
Zoning : 56 - Country District	View: Coastline, Garden, Mountain, Ocean	

Public Remarks: Imagine your private tropical retreat with a fabulous wall of windows, new laminate flooring and a spacious deck with stunning ocean views! A romantic master bedroom with tall ceilings and huge windows to take in the tropical setting! Your cozy chef's kitchen has a gas stove and updated appliances plus a picture view of Chinaman's Hat from the kitchen sink. Two nice sized guest bedrooms, in a home with tons of island charm! Split AC's in all bedrooms and both living rooms! This is a highly sought after 10,700 sq. ft perimeter lot has lots of storage, an outdoor shower, a big shed, and plenty of parking. Located at the end of the road next to preservation land and only one side neighbor! Hawaii at it's best and VA Approved! YouTube Tour: <https://youtu.be/ILYqj5kr7uY> **Sale Conditions:** None **Schools:** , , * [Request Showing](#), [Photos](#), [History](#), [Maps](#), [Deed](#), [Watch List](#), [Tax Info](#)





Address	Price	Bd & Bth	Living / Avg.	Land Avg.	DOM
47-722J Ahuimanu Loop 7	\$839,000	3 & 2/0	1,468 \$572	10,700 \$78	57

Address	Tax Maint. Ass.	Assessed Land	Assessed Building	Assessed Total	Ratio	Year & Remodeled
47-722J Ahuimanu Loop 7	\$233 \$0 \$139	\$651,200	\$227,100	\$878,300	96%	1963 & 1983

Address	Sold Price	Sold Date	Sold Ratio	Original Ratio	Sold Terms
47-722J Ahuimanu Loop 7	\$839,000	08-11-2020	100%	98%	VA

[47-722J Ahuimanu Loop 7](#) - MLS#: [202009329](#) - Original price was \$859,000 - Imagine your private tropical retreat with a fabulous wall of windows, new laminate flooring and a spacious deck with stunning ocean views! A romantic master bedroom with tall ceilings and huge windows to take in the tropical setting! Your cozy chef's kitchen has a gas stove and updated appliances plus a picture view of Chinaman's Hat from the kitchen sink. Two nice sized guest bedrooms, in a home with tons of island charm! Split AC's in all bedrooms and both living rooms! This is a highly sought after 10,700 sq. ft perimeter lot has lots of storage, an outdoor shower, a big shed, and plenty of parking. Located at the end of the road next to preservation land and only one side neighbor! Hawaii at it's best and VA Approved! YouTube Tour: <https://youtu.be/ILYqJ5kr7uY> **Region:** Kaneohe **Neighborhood:** Temple Valley **Condition:** Above Average **Parking:** 1 Car, Street **Total Parking:** 2 **View:** Coastline, Garden, Mountain, Ocean **Frontage:** Other **Pool:** None **Zoning:** 56 - Country District **Sale Conditions:** None **Schools:** , , * [Request Showing](#), [Photos](#), [History](#), [Maps](#), [Deed](#), [Watch List](#), [Tax Info](#)

DOM = Days on Market