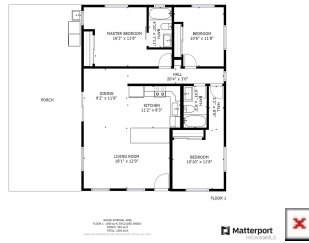


**91-830 Kimopelekane Road, Ewa Beach 96706 \* \$649,000**

Sold Price: \$675,000	Sold Date: 07-17-2020	Sold Ratio: 104%
Beds: <b>3</b>	MLS#: <b>202011789, FS</b>	Year Built: <b>1960</b>
Bath: <b>2/0</b>	Status: <b>Sold</b>	Remodeled: <b>2020</b>
Living Sq. Ft.: <b>1,280</b>	List Date & DOM: <b>05-26-2020 &amp; 6</b>	Total Parking: <b>6</b>
Land Sq. Ft.: <b>5,861</b>	Condition: <b>Above Average, Excellent</b>	<a href="#">Assessed Value</a>
Lanai Sq. Ft.: <b>540</b>	Frontage:	Building: <b>\$89,700</b>
Sq. Ft. Other: <b>0</b>	Tax/Year: <b>\$142/2020</b>	Land: <b>\$464,200</b>
Total Sq. Ft. <b>1,820</b>	Neighborhood: <b>Ewa Beach</b>	Total: <b>\$553,900</b>
Maint./Assoc. <b>\$0 / \$0</b>	<a href="#">Flood Zone</a> : <b>Zone D - Tool</b>	Stories / CPR: <b>One / No</b>
Parking: <b>3 Car+, Carport, Driveway</b>	Frontage:	
<a href="#">Zoning</a> : <b>05 - R-5 Residential District</b>	View: <b>Other</b>	

**Public Remarks:** Come fall in love with this incredible remodel in Ewa Beach! Tucked back from the main road, this home has been tastefully designed with attention to detail. Exciting features include a split A/C, master suite, new electric & 200 amp upgraded panel, copper plumbing & delta fixtures, new roof, new concrete driveway, 26 canned LED lights, even bidet outlets in the bathrooms! From the sliding glass doors off the kitchen, you find a spacious covered lanai & cedar fenced backyard with an irrigation system to keep your grass green. Swing under the shade of a gorgeous mango tree. There is no shortage of parking with room for 6+ cars. You will be in close proximity to parks, beach, schools, and Golf Club. Schedule a showing today! USDA, & VA approved. \*Look for the link to the virtual tour\* **Sale Conditions:** None **Schools:** , , \* [Request Showing](#), [Photos](#), [History](#), [Maps](#), [Deed](#), [Watch List](#), [Tax Info](#)





Address	Price	Bd & Bth	Living / Avg.	Land   Avg.	DOM
<a href="#">91-830 Kimopelekane Road</a>	<a href="#">\$649,000</a>	3 & 2/0	1,280   \$507	5,861   \$111	6

Address	Tax   Maint.   Ass.	Assessed Land	Assessed Building	Assessed Total	Ratio	Year & Remodeled
<a href="#">91-830 Kimopelekane Road</a>	\$142   \$0   \$0	\$464,200	\$89,700	\$553,900	117%	1960 & 2020

Address	Sold Price	Sold Date	Sold Ratio	Original Ratio	Sold Terms
<a href="#">91-830 Kimopelekane Road</a>	\$675,000	07-17-2020	104%	104%	Conventional

<p><a href="#">91-830 Kimopelekane Road</a> - MLS#: <a href="#">202011789</a> - Come fall in love with this incredible remodel in Ewa Beach! Tucked back from the main road, this home has been tastefully designed with attention to detail. Exciting features include a split A/C, master suite, new electric &amp; 200 amp upgraded panel, copper plumbing &amp; delta fixtures, new roof, new concrete driveway, 26 canned LED lights, even bidet outlets in the bathrooms! From the sliding glass doors off the kitchen, you find a spacious covered lanai &amp; cedar fenced backyard with an irrigation system to keep your grass green. Swing under the shade of a gorgeous mango tree. There is no shortage of parking with room for 6+ cars. You will be in close proximity to parks, beach, schools, and Golf Club. Schedule a showing today! USDA, &amp; VA approved. *Look for the link to the virtual tour* <b>Region:</b> Ewa Plain <b>Neighborhood:</b> Ewa Beach <b>Condition:</b> Above Average, Excellent <b>Parking:</b> 3 Car+, Carport, Driveway <b>Total Parking:</b> 6 <b>View:</b> Other <b>Frontage:</b> <b>Pool:</b> None <b>Zoning:</b> 05 - R-5 Residential District <b>Sale Conditions:</b> None <b>Schools:</b> , , * <a href="#">Request Showing</a>, <a href="#">Photos</a>, <a href="#">History</a>, <a href="#">Maps</a>, <a href="#">Deed</a>, <a href="#">Watch List</a>, <a href="#">Tax Info</a></p>					
---	--	--	--	--	--

DOM = Days on Market