

**86-258 Kawili Street, Waianae 96792 \* \$645,000 \* Originally \$690,000**

Sold Price: \$635,000

Sold Date: 09-15-2020

Sold Ratio: 98%

Beds: **2**

MLS#: **202015645, FS**

Year Built: **1989**

Bath: **2/0**

Status: **Sold**

Remodeled:

Living Sq. Ft.: **2,112**

List Date & DOM: **07-07-2020 & 14**

Total Parking: **4**

Land Sq. Ft.: **5,603**

Condition: **Excellent**

[Assessed Value](#)

Lanai Sq. Ft.: **501**

Frontage:

Building: **\$292,100**

Sq. Ft. Other: **0**

Tax/Year: **\$145/2019**

Land: **\$285,900**

Total Sq. Ft. **2,613**

Neighborhood: **Lualualei**

Total: **\$578,000**

Maint./Assoc. **\$0 / \$0**

[Flood Zone](#): **Zone D - Tool**

Stories / CPR: **Three+ / No**

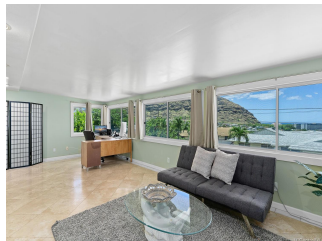
Parking: **3 Car+, Driveway, Garage**

Frontage:

[Zoning](#): **05 - R-5 Residential District**

View: **Coastline, Mountain, Ocean, Sunrise, Sunset**

**Public Remarks:** Welcome to this 2,112 sq. ft. 2 bedroom, 2 bath single family home with NO maintenance or association fees and 32 leased Sunrun PV panels! Stunning vaulted open beam ceiling, open concept floor plan, and large kitchen features stainless steel appliances is great for entertaining. Enjoy beautiful coastline and mountain views from the front room that's great as an office or an additional family room. First bedroom and full bath on the main living floor. The spacious master bedroom suite on the upper floor features a vaulted open beam ceiling, private patio area, sitting area, two vanities, soaker tub, and stand up shower. Tile and laminate flooring throughout along with split AC and window units, 4 car parking (2 garage, 2 driveway). Minutes from beaches and hikes. **Sale Conditions:** None **Schools:** [Leihoku](#), [Waianae](#), [Waianae](#) \* [Request Showing](#), [Photos](#), [History](#), [Maps](#), [Deed](#), [Watch List](#), [Tax Info](#)





Address	Price	Bd & Bth	Living / Avg.	Land   Avg.	DOM
<a href="#">86-258 Kawili Street</a>	<b>\$645,000</b>	2 & 2/0	2,112   \$305	5,603   \$115	14

Address	Tax   Maint.   Ass.	Assessed Land	Assessed Building	Assessed Total	Ratio	Year & Remodeled
<a href="#">86-258 Kawili Street</a>	\$145   \$0   \$0	\$285,900	\$292,100	\$578,000	112%	1989 & NA

Address	Sold Price	Sold Date	Sold Ratio	Original Ratio	Sold Terms
<a href="#">86-258 Kawili Street</a>	\$635,000	09-15-2020	98%	92%	VA

<p><a href="#">86-258 Kawili Street</a> - MLS#: <a href="#">202015645</a> - Original price was \$690,000 - Welcome to this 2,112 sq. ft. 2 bedroom, 2 bath single family home with NO maintenance or association fees and 32 leased Sunrun PV panels! Stunning vaulted open beam ceiling, open concept floor plan, and large kitchen features stainless steel appliances is great for entertaining. Enjoy beautiful coastline and mountain views from the front room that's great as an office or an additional family room. First bedroom and full bath on the main living floor. The spacious master bedroom suite on the upper floor features a vaulted open beam ceiling, private patio area, sitting area, two vanities, soaker tub, and stand up shower. Tile and laminate flooring throughout along with split AC and window units, 4 car parking (2 garage, 2 driveway). Minutes from beaches and hikes. <b>Region:</b> Leeward <b>Neighborhood:</b> Lualualei <b>Condition:</b> Excellent <b>Parking:</b> 3 Car+, Driveway, Garage <b>Total Parking:</b> 4 <b>View:</b> Coastline, Mountain, Ocean, Sunrise, Sunset <b>Frontage:</b> <b>Pool:</b> None <b>Zoning:</b> 05 - R-5 Residential District <b>Sale Conditions:</b> None <b>Schools:</b> <a href="#">Leihoku</a>, <a href="#">Waianae</a>, <a href="#">Waianae</a> * <a href="#">Request Showing</a>, <a href="#">Photos</a>, <a href="#">History</a>, <a href="#">Maps</a>, <a href="#">Deed</a>, <a href="#">Watch List</a>, <a href="#">Tax Info</a></p>					
--	--	--	--	--	--

DOM = Days on Market