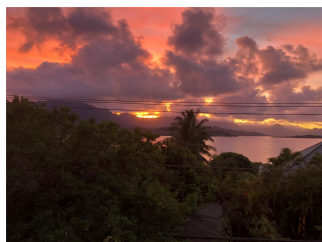
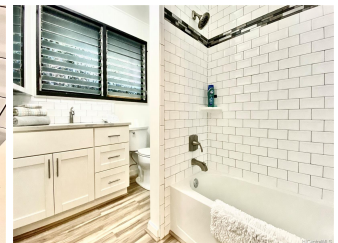
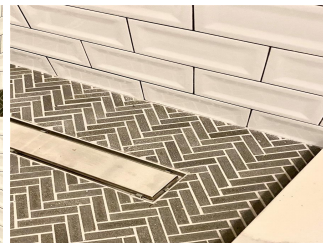
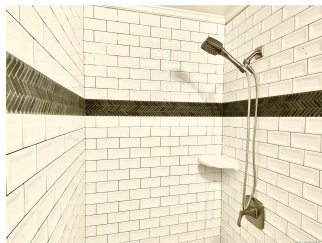
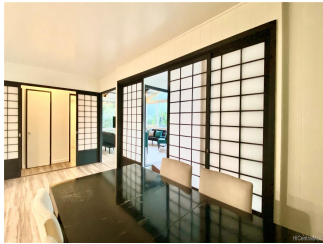


44-632 Kaneohe Bay Drive, Kaneohe 96744 * \$1,135,000

Sold Price: \$1,155,000	Sold Date: 10-30-2020	Sold Ratio: 102%
Beds: 3	MLS#: 202018020, FS	Year Built: 1958
Bath: 2/0	Status: Sold	Remodeled: 2020
Living Sq. Ft.: 1,756	List Date & DOM: 08-28-2020 & 12	Total Parking: 3
Land Sq. Ft.: 10,794	Condition: Above Average, Excellent	Assessed Value
Lanai Sq. Ft.: 652	Frontage: Other	Building: \$202,400
Sq. Ft. Other: 0	Tax/Year: \$266/2020	Land: \$847,900
Total Sq. Ft. 2,408	Neighborhood: Mahinui	Total: \$1,050,300
Maint./Assoc. \$0 / \$0	Flood Zone : Zone D - Tool	Stories / CPR: One / No
Parking: 2 Car, Carport	Frontage: Other	
Zoning : 04 - R-7.5 Residential District	View: Coastline, Ocean, Other, Sunset	

Public Remarks: Spectacular bay view in Kailua school district. Enjoy water & mountain views by day, sunset & twinkles at night. Remodeled kitchen & baths w/ soft close cabinets, quartzite and stainless steel, new Luxury Vinyl Plank flooring, new paint, fixtures, new ceiling fans, 2 new split ACs & more. Three bedrooms two baths, single level, high ceilings. Living room, large entryway, spacious dining area, even kitchen, overlook beautiful Kaneohe Bay! Huge wooden deck 2 yrs old. Two car carport separate from the home with flat roof, additional concrete lanai. Micropiles in front. Excellent location, jump on H-3 easily, easy access to Pali and Likelike highway, minutes from Kaneohe Bay Marine Corps Base facilities, and in the desirable Aikahi, Kailua & Kalaheo school district! Short ride to beaches too. **Sale Conditions:** None **Schools:** [Aikahi](#), [Kailua](#), [Kalaheo](#) * [Request Showing](#), [Photos](#), [History](#), [Maps](#), [Deed](#), [Watch List](#), [Tax Info](#)





Address	Price	Bd & Bth	Living / Avg.	Land Avg.	DOM
44-632 Kaneohe Bay Drive	\$1,135,000	3 & 2/0	1,756 \$646	10,794 \$105	12

Address	Tax Maint. Ass.	Assessed Land	Assessed Building	Assessed Total	Ratio	Year & Remodeled
44-632 Kaneohe Bay Drive	\$266 \$0 \$0	\$847,900	\$202,400	\$1,050,300	108%	1958 & 2020

Address	Sold Price	Sold Date	Sold Ratio	Original Ratio	Sold Terms
44-632 Kaneohe Bay Drive	\$1,155,000	10-30-2020	102%	102%	VA

[44-632 Kaneohe Bay Drive](#) - MLS#: [202018020](#) - Spectacular bay view in Kailua school district. Enjoy water & mountain views by day, sunset & twinkles at night. Remodeled kitchen & baths w/ soft close cabinets, quartzite and stainless steel, new Luxury Vinyl Plank flooring, new paint, fixtures, new ceiling fans, 2 new split ACs & more. Three bedrooms two baths, single level, high ceilings. Living room, large entryway, spacious dining area, even kitchen, overlook beautiful Kaneohe Bay! Huge wooden deck 2 yrs old. Two car carport separate from the home with flat roof, additional concrete lanai. Micropiles in front. Excellent location, jump on H-3 easily, easy access to Pali and Likelike highway, minutes from Kaneohe Bay Marine Corps Base facilities, and in the desirable Aikahi, Kailua & Kalaheo school district! Short ride to beaches too. **Region:** Kaneohe **Neighborhood:** Mahinui **Condition:** Above Average, Excellent **Parking:** 2 Car, Carport **Total Parking:** 3 **View:** Coastline, Ocean, Other, Sunset **Frontage:** Other **Pool:** None **Zoning:** 04 - R-7.5 Residential District **Sale Conditions:** None **Schools:** [Aikahi](#), [Kailua](#), [Kalaheo](#) * [Request Showing](#), [Photos](#), [History](#), [Maps](#), [Deed](#), [Watch List](#), [Tax Info](#)

DOM = Days on Market