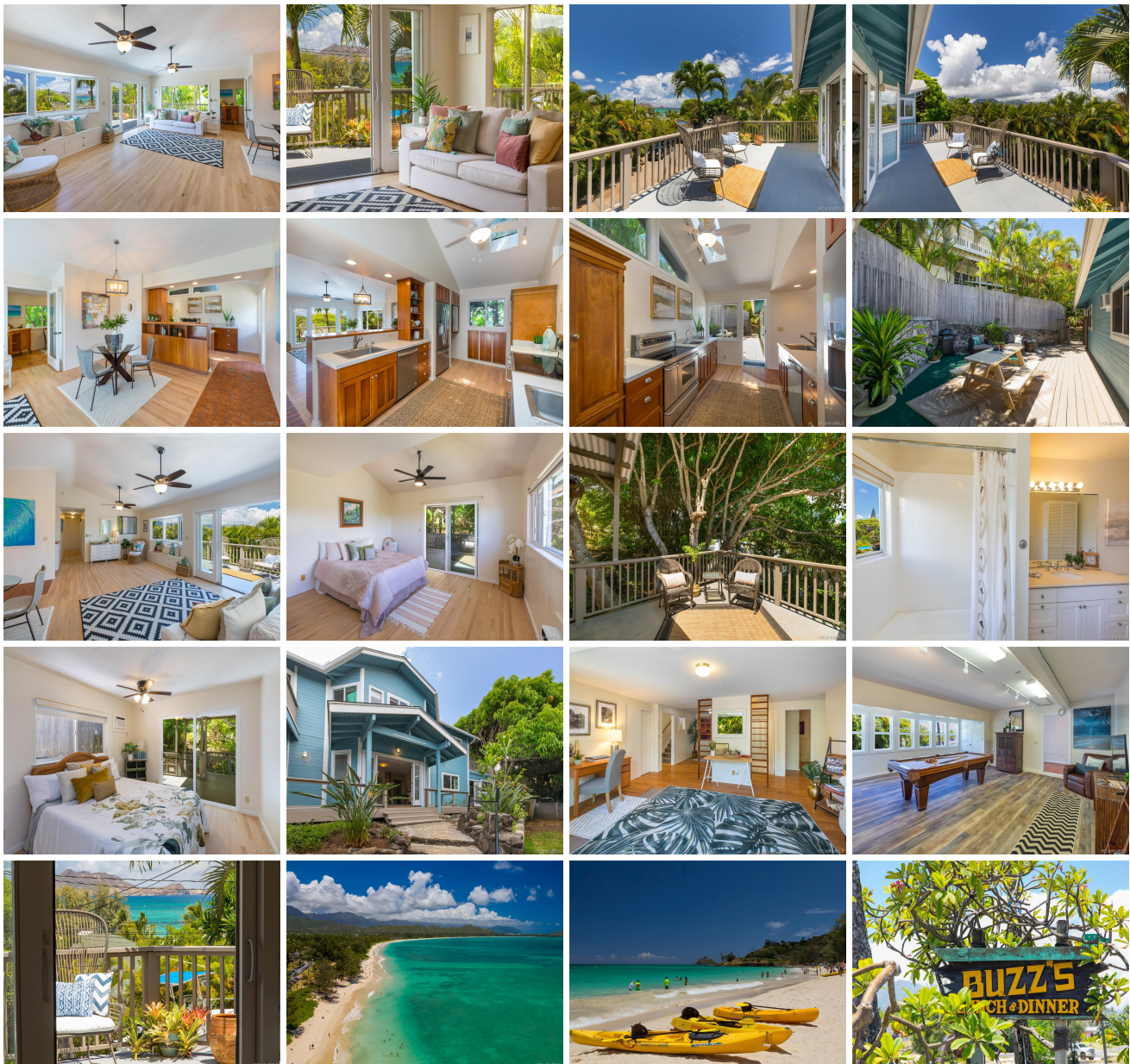


## **589 Kawailoa Road Unit E, Kailua 96734 \* \$1,895,000**

Sold Price: \$1,850,000	Sold Date: 01-15-2021	Sold Ratio: 98%
Beds: <b>5</b>	MLS#: <b><u>202018921</u>, FS</b>	Year Built: <b>1990</b>
Bath: <b>3/0</b>	Status: <b>Sold</b>	Remodeled:
Living Sq. Ft.: <b>3,440</b>	List Date & DOM: <b>09-11-2020 &amp; 65</b>	Total Parking: <b>2</b>
Land Sq. Ft.: <b>7,508</b>	Condition: <b>Excellent</b>	<a href="#">Assessed Value</a>
Lanai Sq. Ft.: <b>0</b>	Frontage: <b>Other</b>	Building: <b>\$389,200</b>
Sq. Ft. Other: <b>0</b>	Tax/Year: <b>\$738/2020</b>	Land: <b>\$1,025,300</b>
Total Sq. Ft. <b>3,440</b>	Neighborhood: <b>Kawailoa-kailua</b>	Total: <b>\$1,414,500</b>
Maint./Assoc. <b>\$0 / \$0</b>	<a href="#">Flood Zone</a> : <b>Zone X - <u>Tool</u></b>	Stories / CPR: <b>Two / Yes</b>
Parking: <b>2 Car, Driveway</b>	Frontage: <b>Other</b>	
<a href="#">Zoning</a> : <b>04 - R-7.5 Residential District</b>	View: <b>Garden, Mountain, Ocean, Sunset</b>	

**Public Remarks:** A Beach lover's dream, located down a quiet and private lane between Kailua's world famous white sandy beach & Kaohao Public Charter School. Enjoy the spacious & open floor plan with natural light on beautifully refinished solid oak hardwoods. Check the surf at Flat Island from your large lanai or cook dinner in your Chef's Kitchen as you watch the sunset over the Koolau Mountains. Downstairs has a large double rec room, offering plenty of space to enjoy as a second living/entertainment area. A sunlit studio off the side of the house is perfect for an artist, an office, or school room. New flooring and kitchen appliances, fresh interior paint, and a new exterior deck. This house is turnkey and ready to go with 20 PV Panels for reduced electricity bills. Minutes to Whole Foods, Target, Kalapawai Market, eateries & shops, and Famous Kailua Beach. **Sale Conditions:** None **Schools:** , , \* [Request Showing](#), [Photos](#), [History](#), [Maps](#), [Deed](#), [Watch List](#), [Tax Info](#)





Address	Price	Bd & Bth	Living / Avg.	Land   Avg.	DOM
<a href="#">589 Kawaiioa Road E</a>	<a href="#">\$1,895,000</a>	5 & 3/0	3,440   \$551	7,508   \$252	65

Address	Tax   Maint.   Ass.	Assessed Land	Assessed Building	Assessed Total	Ratio	Year & Remodeled
<a href="#">589 Kawaiioa Road E</a>	\$738   \$0   \$0	\$1,025,300	\$389,200	\$1,414,500	134%	1990 & NA

Address	Sold Price	Sold Date	Sold Ratio	Original Ratio	Sold Terms
<a href="#">589 Kawaiioa Road E</a>	\$1,850,000	01-15-2021	98%	98%	Conventional 12000

[589 Kawaiioa Road E](#) - MLS#: [202018921](#) - A Beach lover's dream, located down a quiet and private lane between Kailua's world famous white sandy beach & Kaohao Public Charter School. Enjoy the spacious & open floor plan with natural light on beautifully refinished solid oak hardwoods. Check the surf at Flat Island from your large lanai or cook dinner in your Chef's Kitchen as you watch the sunset over the Koolau Mountains. Downstairs has a large double rec room, offering plenty of space to enjoy as a second living/entertainment area. A sunlit studio off the side of the house is perfect for an artist, an office, or school room. New flooring and kitchen appliances, fresh interior paint, and a new exterior deck. This house is turnkey and ready to go with 20 PV Panels for reduced electricity bills. Minutes to Whole Foods, Target, Kalapawai Market, eateries & shops, and Famous Kailua Beach. **Region:** Kailua **Neighborhood:** Kawaiioa-kailua **Condition:** Excellent **Parking:** 2 Car, Driveway **Total Parking:** 2 **View:** Garden, Mountain, Ocean, Sunset **Frontage:** Other **Pool:** None **Zoning:** 04 - R-7.5 Residential District **Sale Conditions:** None **Schools:** , , \* [Request Showing](#), [Photos](#), [History](#), [Maps](#), [Deed](#), [Watch List](#), [Tax Info](#)

DOM = Days on Market