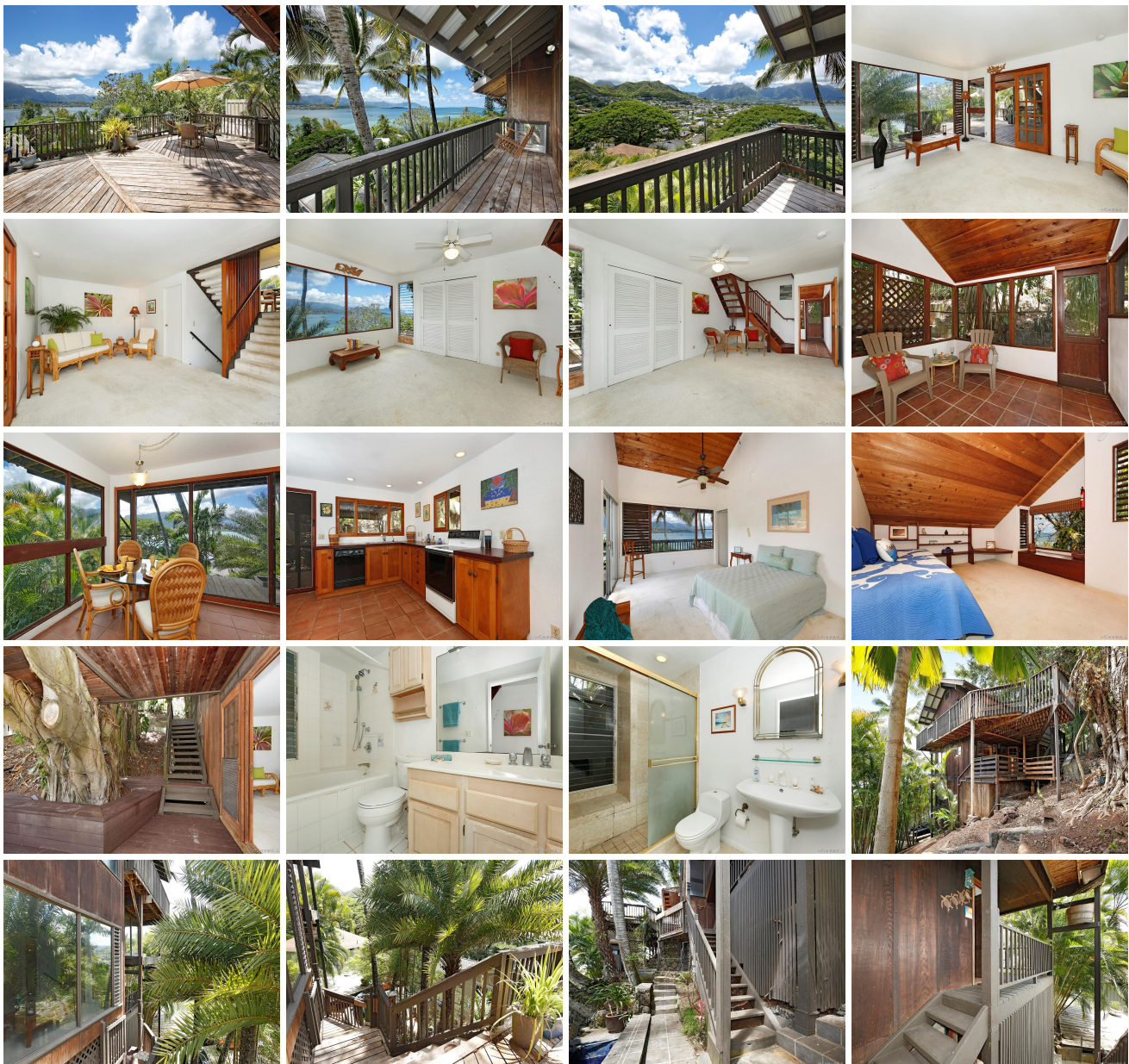


44-638 Kaneohe Bay Drive, Kaneohe 96744 * \$819,000

Sold Price: \$850,000	Sold Date: 10-16-2020	Sold Ratio: 104%
Beds: 2	MLS#: 202021133, FS	Year Built: 1975
Bath: 2/0	Status: Sold	Remodeled: 1986
Living Sq. Ft.: 1,525	List Date & DOM: 08-24-2020 & 8	Total Parking: 4
Land Sq. Ft.: 7,921	Condition: Fair	Assessed Value
Lanai Sq. Ft.: 264	Frontage:	Building: \$224,000
Sq. Ft. Other: 0	Tax/Year: \$271/2020	Land: \$844,200
Total Sq. Ft. 1,789	Neighborhood: Mahinui	Total: \$1,068,200
Maint./Assoc. \$0 / \$0	Flood Zone : Zone D - Tool	Stories / CPR: Split Level / No
Parking: 2 Car, Carport, Driveway	Frontage:	
Zoning : 04 - R-7.5 Residential District	View: Mountain, Ocean	

Public Remarks: Wow! Fabulous views & a Fabulous opportunity to own this unique one-of-a-kind "Treehouse"! Great Kaneohe Bay and Koolau Mountain views from both living areas, bedrooms and dining area. Huge main deck and several smaller decks, and yes, a tree growing up the middle of a wrap-around bench off the main deck. This home needs a lot of work & is priced to give someone the opportunity to create their dream home. Terraced steps offer the opportunity for a terraced garden. Located close to the yacht club & in Aikahi school district. Great opportunity...don't miss it! **Sale**

Conditions: None **Schools:** [Aikahi](#), [Kailua](#), [Kalaheo](#) * [Request Showing](#), [Photos](#), [History](#), [Maps](#), [Deed](#), [Watch List](#), [Tax Info](#)





Address	Price	Bd & Bth	Living / Avg.	Land Avg.	DOM
44-638 Kaneohe Bay Drive	\$819,000	2 & 2/0	1,525 \$537	7,921 \$103	8

Address	Tax Maint. Ass.	Assessed Land	Assessed Building	Assessed Total	Ratio	Year & Remodeled
44-638 Kaneohe Bay Drive	\$271 \$0 \$0	\$844,200	\$224,000	\$1,068,200	77%	1975 & 1986

Address	Sold Price	Sold Date	Sold Ratio	Original Ratio	Sold Terms
44-638 Kaneohe Bay Drive	\$850,000	10-16-2020	104%	104%	Conventional

[44-638 Kaneohe Bay Drive](#) - MLS#: [202021133](#) - Wow! Fabulous views & a Fabulous opportunity to own this unique one-of-a-kind "Treehouse"! Great Kaneohe Bay and Koolau Mountain views from both living areas, bedrooms and dining area. Huge main deck and several smaller decks, and yes, a tree growing up the middle of a wrap-around bench off the main deck. This home needs a lot of work & is priced to give someone the opportunity to create their dream home. Terraced steps offer the opportunity for a terraced garden. Located close to the yacht club & in Aikahi school district. Great opportunity...don't miss it! **Region:** Kaneohe **Neighborhood:** Mahinui **Condition:** Fair **Parking:** 2 Car, Carport, Driveway **Total Parking:** 4 **View:** Mountain, Ocean **Frontage:** **Pool:** None **Zoning:** 04 - R-7.5 Residential District **Sale Conditions:** None **Schools:** [Aikahi](#), [Kailua](#), [Kalaheo](#) * [Request Showing](#), [Photos](#), [History](#), [Maps](#), [Deed](#), [Watch List](#), [Tax Info](#)

DOM = Days on Market