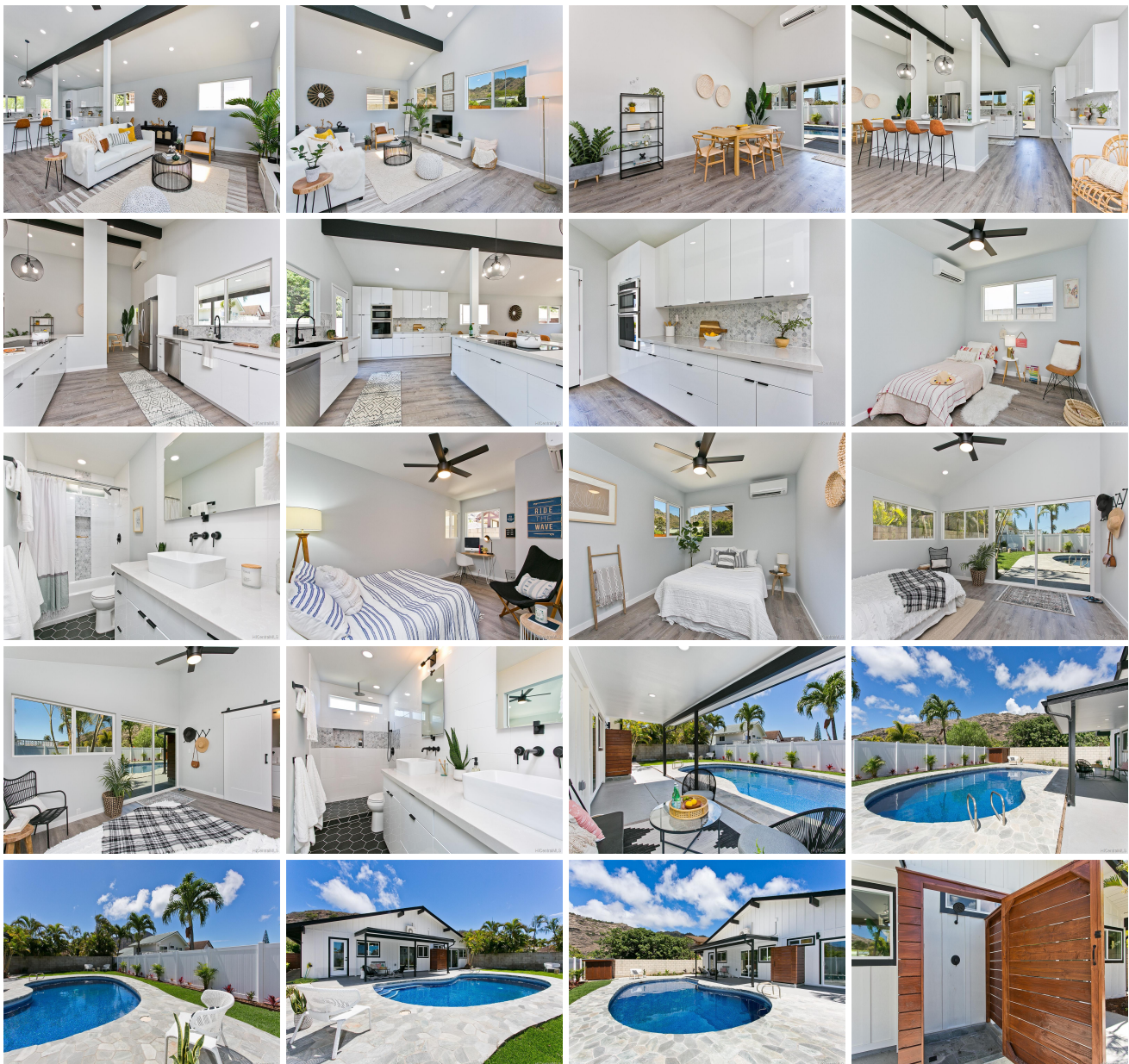


6806 Niualu Loop, Honolulu 96825 * \$1,390,000

Sold Price: \$1,400,000	Sold Date: 10-09-2020	Sold Ratio: 101%
Beds: 4	MLS#: <u>202021758</u>, FS	Year Built: 1970
Bath: 2/0	Status: Sold	Remodeled: 2020
Living Sq. Ft.: 1,908	List Date & DOM: 09-01-2020 & 9	Total Parking: 4
Land Sq. Ft.: 7,533	Condition: Excellent	Assessed Value
Lanai Sq. Ft.: 200	Frontage:	Building: \$211,700
Sq. Ft. Other: 0	Tax/Year: \$481/2020	Land: \$908,500
Total Sq. Ft. 2,108	Neighborhood: Mariners Cove	Total: \$1,120,200
Maint./Assoc. \$0 / \$34	Flood Zone : Zone D - Tool	Stories / CPR: One / No
Parking: 3 Car+, Carport, Driveway	Frontage:	
Zoning : 04 - R-7.5 Residential District	View: Mountain	

Public Remarks: Welcome Home to this stunningly remodeled 4/2 home in private and desirable Mariner's Cove. Full renovation with a discerning attention to detail and contemporary design style, high-end luxury finishes, extra large kitchen, spacious and modern layout with high ceilings, and split AC throughout. Large swimming pool with covered lanai area, outdoor shower, and landscaped yard are perfect for entertaining. Enjoy beautiful mountain views from almost every room. Includes membership to Mariner's Cove Bay Club with access to clubhouse, pool, and boat launch. **Sale Conditions:** None
Schools: , , * [Request Showing](#), [Photos](#), [History](#), [Maps](#), [Deed](#), [Watch List](#), [Tax Info](#)





Address	Price	Bd & Bth	Living / Avg.	Land Avg.	DOM
6806 Niumalu Loop	\$1,390,000	4 & 2/0	1,908 \$729	7,533 \$185	9

Address	Tax Maint. Ass.	Assessed Land	Assessed Building	Assessed Total	Ratio	Year & Remodeled
6806 Niumalu Loop	\$481 \$0 \$34	\$908,500	\$211,700	\$1,120,200	124%	1970 & 2020

Address	Sold Price	Sold Date	Sold Ratio	Original Ratio	Sold Terms
6806 Niumalu Loop	\$1,400,000	10-09-2020	101%	101%	Conventional

[6806 Niumalu Loop](#) - MLS#: [202021758](#) - Welcome Home to this stunningly remodeled 4/2 home in private and desirable Mariner's Cove. Full renovation with a discerning attention to detail and contemporary design style, high- end luxury finishes, extra large kitchen, spacious and modern layout with high ceilings, and split AC throughout. Large swimming pool with covered lanai area, outdoor shower, and landscaped yard are perfect for entertaining. Enjoy beautiful mountain views from almost every room. Includes membership to Mariner's Cove Bay Club with access to clubhouse, pool, and boat launch.

Region: Hawaii Kai **Neighborhood:** Mariners Cove **Condition:** Excellent **Parking:** 3 Car+, Carport, Driveway **Total Parking:** 4 **View:** Mountain **Frontage:** **Pool:** In Ground **Zoning:** 04 - R-7.5 Residential District **Sale Conditions:** None **Schools:** , , * [Request Showing](#), [Photos](#), [History](#), [Maps](#), [Deed](#), [Watch List](#), [Tax Info](#)

DOM = Days on Market