

53-866 Kamehameha Highway Unit C3, Hauula 96717 * \$639,900

Sold Price: \$665,000

Sold Date: 11-12-2020

Sold Ratio: 104%

Beds: **2**

MLS#: **202023555, FS**

Year Built: **1944**

Bath: **1/0**

Status: **Sold**

Remodeled: **2013**

Living Sq. Ft.: **854**

List Date & DOM: **09-12-2020 & 10**

Total Parking: **2**

Land Sq. Ft.: **10,401**

Condition: **Above Average**

[Assessed Value](#)

Lanai Sq. Ft.: **25**

Frontage:

Building: **\$108,700**

Sq. Ft. Other: **0**

Tax/Year: **\$147/2020**

Land: **\$496,100**

Total Sq. Ft. **879**

Neighborhood: **Hauula**

Total: **\$604,800**

Maint./Assoc. **\$0 / \$0**

[Flood Zone](#): **Zone VE - Tool**

Stories / CPR: **One / Yes**

Parking: **3 Car+, Carport, Driveway**

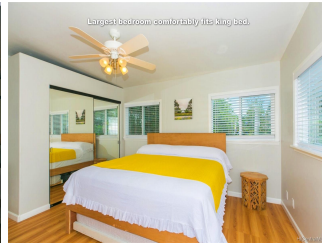
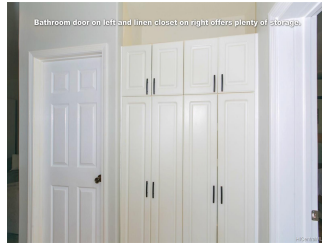
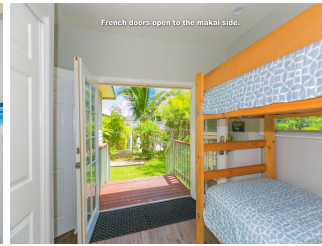
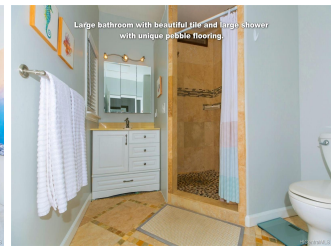
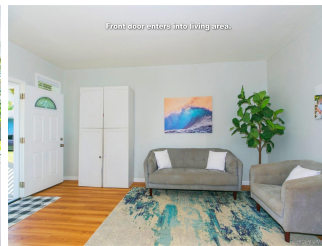
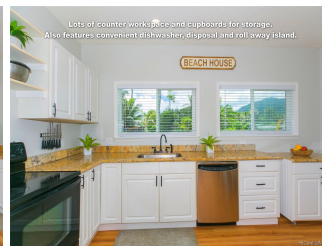
Frontage:

[Zoning](#): **05 - R-5 Residential District**

View: **Garden, Mountain**

Public Remarks: "Rare find! Charming beach cottage, 854 sq. ft. 2 bed/1 bath, on large 10,000+ sq. ft. lot in Hauula with plenty of room to expand. Large windows let in lots of natural light throughout and breathtaking 180-degree views of the Koolau Mountains. Spacious kitchen with granite countertops and lots of cabinet storage. It is a one-minute walk to the neighborhood beach and located at the end of an adorable and safe dead-end street. Beautifully remodeled with an open floor plan with intuitive spatial flow. Large, secluded yard with mature landscaping offers additional privacy and a variety of fruit trees (coconut, banana, lime, papaya, noni). Large 7 by 7 tool shed provides plenty of additional storage **Sale**

Conditions: None **Schools:** [Hauula](#), [Kahuku](#), [Kahuku](#) * [Request Showing](#), [Photos](#), [History](#), [Maps](#), [Deed](#), [Watch List](#), [Tax Info](#)





Address	Price	Bd & Bth	Living / Avg.	Land Avg.	DOM
53-866 Kamehameha Highway C3	\$639,900	2 & 1/0	854 \$749	10,401 \$62	10

Address	Tax Maint. Ass.	Assessed Land	Assessed Building	Assessed Total	Ratio	Year & Remodeled
53-866 Kamehameha Highway C3	\$147 \$0 \$0	\$496,100	\$108,700	\$604,800	106%	1944 & 2013

Address	Sold Price	Sold Date	Sold Ratio	Original Ratio	Sold Terms
53-866 Kamehameha Highway C3	\$665,000	11-12-2020	104%	104%	VA

[53-866 Kamehameha Highway C3](#) - MLS#: [202023555](#) - "Rare find! Charming beach cottage, 854 sq. ft. 2 bed/1 bath, on large 10,000+ sq. ft. lot in Hauula with plenty of room to expand. Large windows let in lots of natural light throughout and breathtaking 180-degree views of the Koolau Mountains. Spacious kitchen with granite countertops and lots of cabinet storage. It is a one-minute walk to the neighborhood beach and located at the end of an adorable and safe dead-end street. Beautifully remodeled with an open floor plan with intuitive spatial flow. Large, secluded yard with mature landscaping offers additional privacy and a variety of fruit trees (coconut, banana, lime, papaya, noni). Large 7 by 7 tool shed provides plenty of additional storage **Region:** Kaneohe **Neighborhood:** Hauula **Condition:** Above Average **Parking:** 3 Car+, Carport, Driveway **Total Parking:** 2 **View:** Garden, Mountain **Frontage:** Pool: None **Zoning:** 05 - R-5 Residential District **Sale Conditions:** None **Schools:** [Hauula](#), [Kahuku](#), [Kahuku](#) * [Request Showing](#), [Photos](#), [History](#), [Maps](#), [Deed](#), [Watch List](#), [Tax Info](#)

DOM = Days on Market