

2339 Ahakapu Street, Pearl City 96782 * \$879,000 * Originally \$899,000

Sold Price: \$879,000

Sold Date: 11-24-2020

Sold Ratio: 100%

Beds: **5**

MLS#: **202024740, FS**

Year Built: **1966**

Bath: **3/1**

Status: **Sold**

Remodeled: **1968**

Living Sq. Ft.: **2,028**

List Date & DOM: **09-24-2020 & 12**

Total Parking: **4**

Land Sq. Ft.: **6,696**

Condition: **Excellent**

[Assessed Value](#)

Lanai Sq. Ft.: **0**

Frontage: **Conservation**

Building: **\$145,000**

Sq. Ft. Other: **0**

Tax/Year: **\$208/2018**

Land: **\$603,300**

Total Sq. Ft. **2,028**

Neighborhood: **Pacific Palisades**

Total: **\$748,300**

Maint./Assoc. **\$0 / \$0**

[Flood Zone](#): **Zone D - Tool**

Stories / CPR: **Two, Split Level / No**

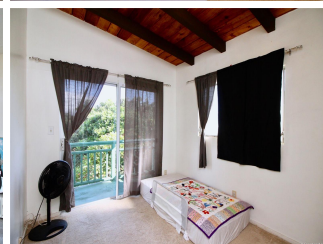
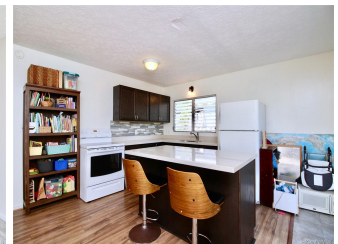
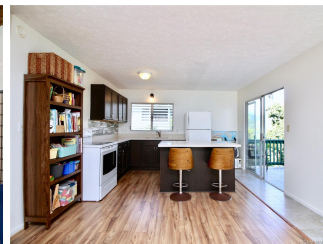
Parking: **3 Car+, Boat, Carport, Driveway, Street**

Frontage: **Conservation**

[Zoning](#): **05 - R-5 Residential District**

View: **Coastline, Garden, Mountain, Ocean**

Public Remarks: E Komo Mai...Immaculate move-in ready perimeter home in cool and breezy Pacific Palisades. Front home has open-concept kitchen with quartz countertops, 3 bedrooms in first level and second level with a family room that was formerly used as a rental. Rear home has an ADA ramp with 36" door for convenient moving of furniture. Rear unit has a "wet bar" and private bathroom. First and second level have lanais with views to Waimao Valley and Pearl Harbor. Lots of fruit trees (crownflower, native trees, papaya) on this mostly level lot. Great neighbors in an established dead end street with little traffic. Excelecnt school district (Palisades Highland intermediate, Pearl City HS.) Convenient to all major military installations and easy freeway access. VA approved. Potential rental income. **Sale Conditions:** None **Schools:** , , * [Request Showing](#), [Photos](#), [History](#), [Maps](#), [Deed](#), [Watch List](#), [Tax Info](#)





Address	Price	Bd & Bth	Living / Avg.	Land Avg.	DOM
2339 Ahakapu Street	\$879,000	5 & 3/1	2,028 \$433	6,696 \$131	12

Address	Tax Maint. Ass.	Assessed Land	Assessed Building	Assessed Total	Ratio	Year & Remodeled
2339 Ahakapu Street	\$208 \$0 \$0	\$603,300	\$145,000	\$748,300	117%	1966 & 1968

Address	Sold Price	Sold Date	Sold Ratio	Original Ratio	Sold Terms
2339 Ahakapu Street	\$879,000	11-24-2020	100%	98%	Conventional 3000

[2339 Ahakapu Street](#) - MLS#: [202024740](#) - Original price was \$899,000 - E Komo Mai...Immaculate move-in ready perimeter home in cool and breezy Pacific Palisades. Front home has open-concept kitchen with quartz countertops, 3 bedrooms in first level and second level with a family room that was formerly used as a rental. Rear home has an ADA ramp with 36" door for convenient moving of furniture. Rear unit has a "wet bar" and private bathroom. First and second level have lanais with views to Waimao Valley and Pearl Harbor. Lots of fruit trees (crownflower, native trees, papaya) on this mostly level lot. Great neighbors in an established dead end street with little traffic. Excellent school district (Palisades Highland intermediate, Pearl City HS.) Convenient to all major military installations and easy freeway access. VA approved. Potential rental income. **Region:** Pearl City **Neighborhood:** Pacific Palisades **Condition:** Excellent **Parking:** 3 Car+, Boat, Carport, Driveway, Street **Total Parking:** 4 **View:** Coastline, Garden, Mountain, Ocean **Frontage:** Conservation **Pool:** None **Zoning:** 05 - R-5 Residential District **Sale Conditions:** None **Schools:** , , * [Request Showing](#), [Photos](#), [History](#), [Maps](#), [Deed](#), [Watch List](#), [Tax Info](#)

DOM = Days on Market