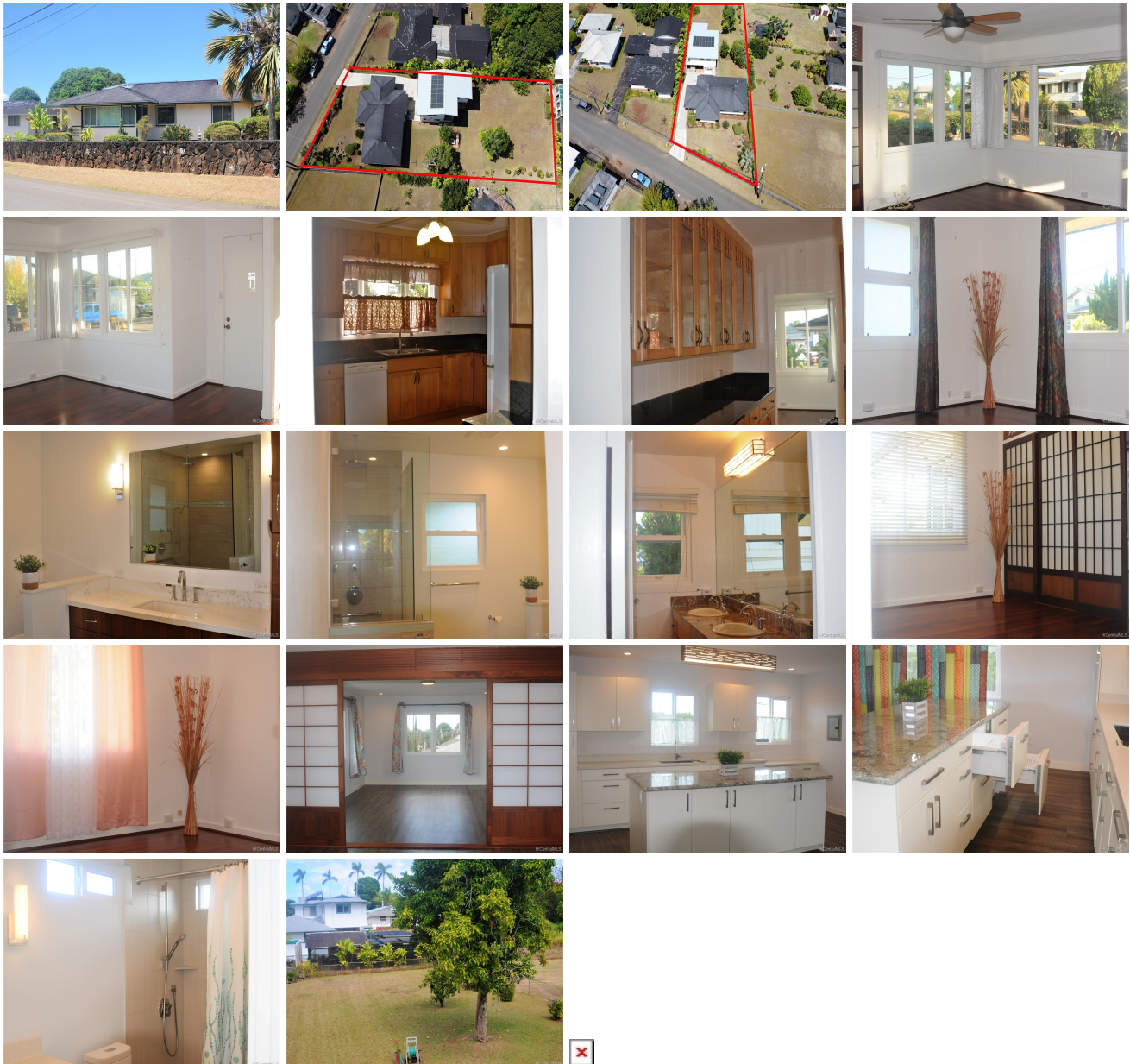


1592 Eames Street, Wahiawa 96786 * \$995,000

| | | |
|---|---|--------------------------------|
| Sold Price: \$1,101,000 | Sold Date: 12-17-2020 | Sold Ratio: 111% |
| Beds: 3 | MLS#: 20205200, FS | Year Built: 1950 |
| Bath: 2/1 | Status: Sold | Remodeled: 2000 |
| Living Sq. Ft.: 1,412 | List Date & DOM: 10-01-2020 & 11 | Total Parking: 3 |
| Land Sq. Ft.: 15,613 | Condition: Excellent | Assessed Value |
| Lanai Sq. Ft.: 464 | Frontage: Other | Building: \$287,500 |
| Sq. Ft. Other: 840 | Tax/Year: \$215/2020 | Land: \$448,900 |
| Total Sq. Ft. 2,716 | Neighborhood: Wahiawa Heights | Total: \$736,400 |
| Maint./Assoc. \$0 / \$0 | Flood Zone : Zone D - Tool | Stories / CPR: One / No |
| Parking: 3 Car+, Carport, Driveway | Frontage: Other | |
| Zoning : 03 - R10 - Residential District | View: Mountain, Other | |

Public Remarks: A very well maintained 3 bedrooms and 2 full baths with Brazilian cherry hardwood floors. Large, seldom available, level lot with fruit trees and room for expansion. Quiet, cool, established neighborhood. Remodeled in 2000 including plumbing and electrical upgrades. Owned roof-top PV system, (14 photovoltaic panels). The windows of the main house were replaced with Coastal Windows. A detached, high-ceiling carport with a full laundry room, 1/2 bathroom, bonus room, and a generous storage/workroom downstairs. Upstairs, a very spacious recreation room with a wet bar including Sub-Zero appliances. Shoji divider doors and a full bath. A MUST-SEE!!! **Sale Conditions:** None **Schools:** [Wahiawa](#), [Wahiawa](#), [Leilehua](#) * [Request Showing](#), [Photos](#), [History](#), [Maps](#), [Deed](#), [Watch List](#), [Tax Info](#)



| Address | Price | Bd & Bth | Living / Avg. | Land Avg. | DOM |
|---------|-------|----------|---------------|-------------|-----|
|---------|-------|----------|---------------|-------------|-----|

| | | | | | |
|-----------------------------------|---------------------------|---------|---------------|---------------|----|
| 1592 Eames Street | \$995,000 | 3 & 2/1 | 1,412 \$705 | 15,613 \$64 | 11 |
|-----------------------------------|---------------------------|---------|---------------|---------------|----|

| Address | Tax Maint. Ass. | Assessed Land | Assessed Building | Assessed Total | Ratio | Year & Remodeled |
|-----------------------------------|---------------------|---------------|-------------------|----------------|-------|------------------|
| 1592 Eames Street | \$215 \$0 \$0 | \$448,900 | \$287,500 | \$736,400 | 135% | 1950 & 2000 |

| Address | Sold Price | Sold Date | Sold Ratio | Original Ratio | Sold Terms |
|-----------------------------------|-------------|------------|------------|----------------|--------------|
| 1592 Eames Street | \$1,101,000 | 12-17-2020 | 111% | 111% | Conventional |

| | | | | | | |
|--|--|--|--|--|--|--|
| 1592 Eames Street - MLS#: 202025200 - A very well maintained 3 bedrooms and 2 full baths with Brazilian cherry hardwood floors. Large, seldom available, level lot with fruit trees and room for expansion. Quiet, cool, established neighborhood. Remodeled in 2000 including plumbing and electrical upgrades. Owned roof-top PV system, (14 photovoltaic panels). The windows of the main house were replaced with Coastal Windows. A detached, high-ceiling carport with a full laundry room, 1/2 bathroom, bonus room, and a generous storage/workroom downstairs. Upstairs, a very spacious recreation room with a wet bar including Sub-Zero appliances. Shoji divider doors and a full bath. A MUST-SEE!!! Region: Central Neighborhood: Wahiawa Heights Condition: Excellent Parking: 3 Car+, Carport, Driveway Total Parking: 3 View: Mountain, Other Frontage: Other Pool: None Zoning: 03 - R10 - Residential District Sale Conditions: None Schools: Wahiawa , Wahiawa , Leilehua * Request Showing , Photos , History , Maps , Deed , Watch List , Tax Info | | | | | | |
|--|--|--|--|--|--|--|

DOM = Days on Market