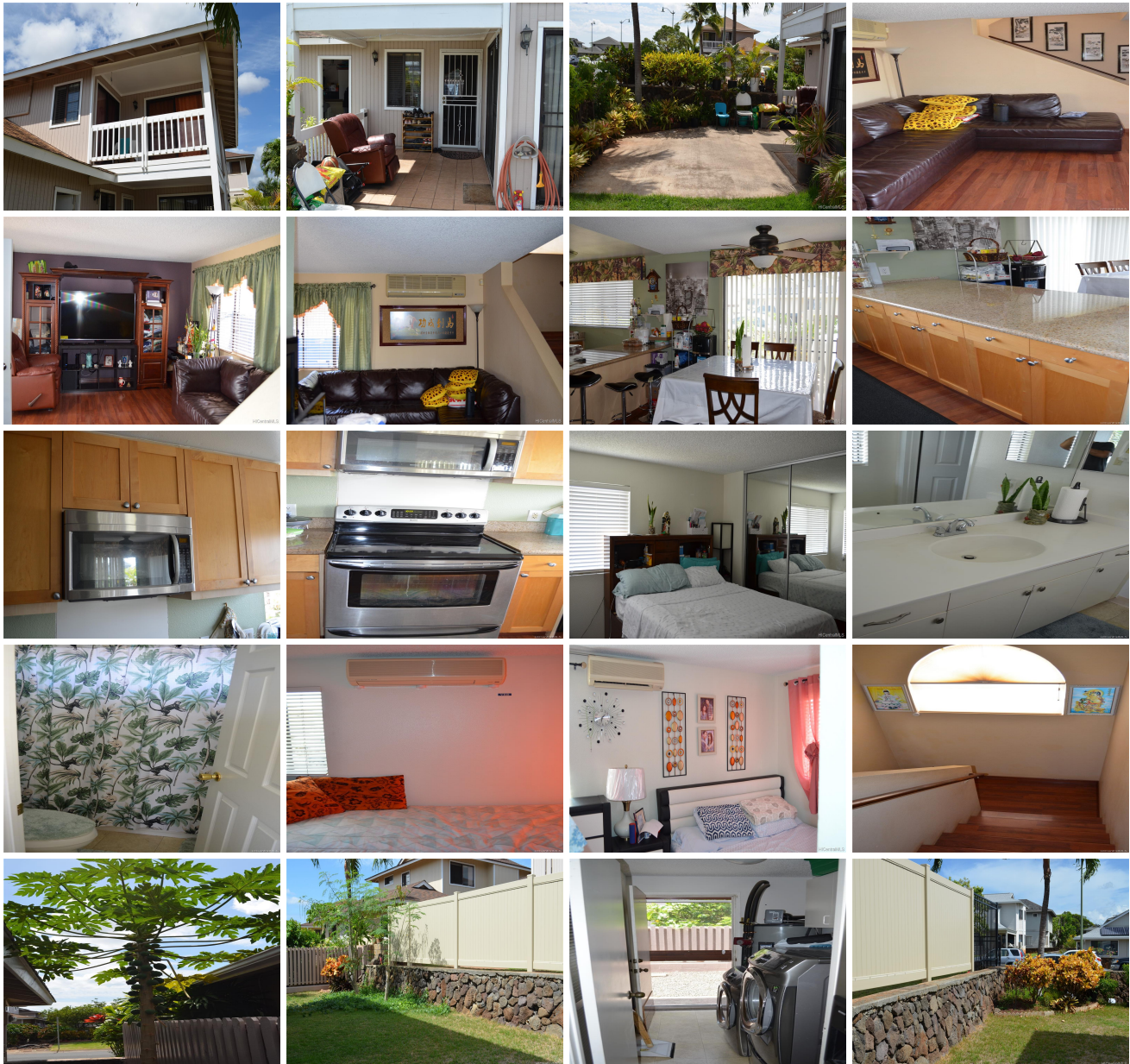


## 91-1025 Huluhulu Street, Ewa Beach 96706 \* \$770,000

Sold Price: \$770,000	Sold Date: 12-14-2020	Sold Ratio: 100%
Beds: <b>3</b>	MLS#: <b>202027056, FS</b>	Year Built: <b>1989</b>
Bath: <b>2/0</b>	Status: <b>Sold</b>	Remodeled: <b>2016</b>
Living Sq. Ft.: <b>1,280</b>	List Date & DOM: <b>10-12-2020 &amp; 14</b>	Total Parking: <b>2</b>
Land Sq. Ft.: <b>4,022</b>	Condition: <b>Excellent</b>	<a href="#">Assessed Value</a>
Lanai Sq. Ft.: <b>100</b>	Frontage: <b>Other</b>	Building: <b>\$177,600</b>
Sq. Ft. Other: <b>60</b>	Tax/Year: <b>\$179/2020</b>	Land: <b>\$435,700</b>
Total Sq. Ft. <b>1,440</b>	Neighborhood: <b>Westloch Estates</b>	Total: <b>\$613,300</b>
Maint./Assoc. <b>\$0 / \$60</b>	<a href="#">Flood Zone</a> : <b>Zone D - Tool</b>	Stories / CPR: <b>Two / No</b>
Parking: <b>3 Car+, Driveway, Garage, Street</b>	Frontage: <b>Other</b>	
<a href="#">Zoning</a> : <b>51 - AG-1 Restricted Agricultur</b>	View: <b>Mountain</b>	

**Public Remarks:** CORNER LOT with lots of room to add an expansion or gardening. Situated in the quiet Westloch Estates! Home has laminate flooring through out. Updated kitchen cabinets and counter tops with stainless steel appliances. Rare second floor lanai can be accessed from 2 rooms. A laundry room off of the kitchen. Solar water heater helps to keep electricity cost down. Great covered porch and extended cement area for entertaining guest. Split AC unit in every room of the house for those hot nights and days. Enjoy fruits from the papaya tree and vegetable plants in the yard. Walking distance to BUS LINE, Queens West hospital. Conveniently located near freeway entry and exit. **Sale Conditions:** None **Schools:** [Holomua](#), [Ilima](#), [Campbell](#) \* [Request Showing](#), [Photos](#), [History](#), [Maps](#), [Deed](#), [Watch List](#), [Tax Info](#)



Address	Price	Bd & Bth	Living / Avg.	Land   Avg.	DOM
---------	-------	----------	---------------	-------------	-----

<a href="#">91-1025 Huluhulu Street</a>	<a href="#">\$770,000</a>	3 & 2/0	1,280   \$602	4,022   \$191	14
---	---------------------------	---------	---------------	---------------	----

Address	Tax   Maint.   Ass.	Assessed Land	Assessed Building	Assessed Total	Ratio	Year & Remodeled
<a href="#">91-1025 Huluhulu Street</a>	\$179   \$0   \$60	\$435,700	\$177,600	\$613,300	126%	1989 & 2016

Address	Sold Price	Sold Date	Sold Ratio	Original Ratio	Sold Terms
<a href="#">91-1025 Huluhulu Street</a>	\$770,000	12-14-2020	100%	100%	Conventional

<p><a href="#">91-1025 Huluhulu Street</a> - MLS#: <a href="#">202027056</a> - CORNER LOT with lots of room to add an expansion or gardening. Situated in the quiet Westloch Estates! Home has laminate flooring through out. Updated kitchen cabinets and counter tops with stainless steel appliances. Rare second floor lanai can be accessed from 2 rooms. A laundry room off of the kitchen. Solar water heater helps to keep electricity cost down. Great covered porch and extended cement area for entertaining guest. Split AC unit in every room of the house for those hot nights and days. Enjoy fruits from the papaya tree and vegetable plants in the yard. Walking distance to BUS LINE, Queens West hospital. Conveniently located near freeway entry and exit.</p> <p><b>Region:</b> Ewa Plain <b>Neighborhood:</b> Westloch Estates <b>Condition:</b> Excellent <b>Parking:</b> 3 Car+, Driveway, Garage, Street <b>Total Parking:</b> 2 <b>View:</b> Mountain <b>Frontage:</b> Other <b>Pool:</b> None <b>Zoning:</b> 51 - AG-1 Restricted Agricultur <b>Sale Conditions:</b> None <b>Schools:</b> <a href="#">Holomua</a>, <a href="#">Ilima</a>, <a href="#">Campbell</a> * <a href="#">Request Showing</a>, <a href="#">Photos</a>, <a href="#">History</a>, <a href="#">Maps</a>, <a href="#">Deed</a>, <a href="#">Watch List</a>, <a href="#">Tax Info</a></p>					
--	--	--	--	--	--

DOM = Days on Market