

66-561 Kamehameha Highway, Haleiwa 96712 * \$865,000 * Originally \$917,000

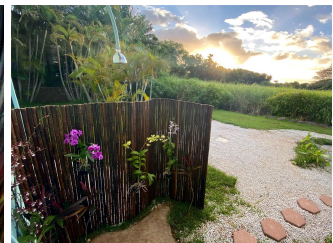
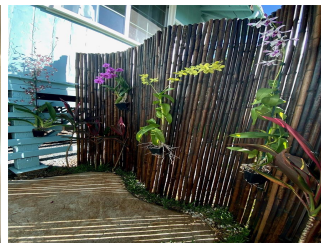
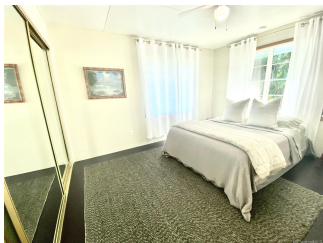
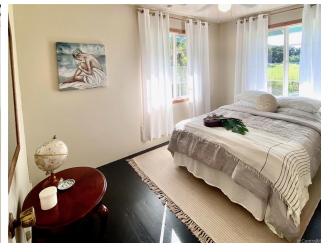
Sold Price: \$837,500	Sold Date: 03-12-2021	Sold Ratio: 97%
Beds: 3	MLS#: 202028736, FS	Year Built: 1948
Bath: 1/0	Status: Sold	Remodeled: 2020
Living Sq. Ft.: 960	List Date & DOM: 11-08-2020 & 74	Total Parking: 6
Land Sq. Ft.: 7,714	Condition: Above Average	Assessed Value
Lanai Sq. Ft.: 520	Frontage: Other, Stream/Canal	Building: \$121,900
Sq. Ft. Other: 121	Tax/Year: \$79/2020	Land: \$423,000
Total Sq. Ft. 1,601	Neighborhood: Waiialua	Total: \$544,900
Maint./Assoc. \$0 / \$0	Flood Zone : Zone AE - Tool	Stories / CPR: One / No
Parking: 3 Car+, Driveway	Frontage: Other, Stream/Canal	

[Zoning](#): **05 - R-5 Residential District**

View: **Garden, Marina/Canal, Mountain, Sunset**

Public Remarks: Heart of Haleiwa! Enjoy every sunset from this huge lanai with your favorite drink in hand. Large board shaper's shed has lots of storage. Hop right in the orchid lined outdoor shower when you get back from the ocean. Wander over to all the restaurants in Haleiwa in just a few minutes. Need to commute to town or airport, it's a mere 30 minutes from this home. The interior has been meticulously restored and is ready for you to move right in. Expansion minded? This large lot allows for duplex or just pop in an ADU for guests or additional office space. Private showings available now. **Sale**

Conditions: None **Schools:** , , * [Request Showing](#), [Photos](#), [History](#), [Maps](#), [Deed](#), [Watch List](#), [Tax Info](#)





Address	Price	Bd & Bth	Living / Avg.	Land Avg.	DOM
66-561 Kamehameha Highway	\$865,000	3 & 1/0	960 \$901	7,714 \$112	74

Address	Tax Maint. Ass.	Assessed Land	Assessed Building	Assessed Total	Ratio	Year & Remodeled
66-561 Kamehameha Highway	\$79 \$0 \$0	\$423,000	\$121,900	\$544,900	159%	1948 & 2020

Address	Sold Price	Sold Date	Sold Ratio	Original Ratio	Sold Terms
66-561 Kamehameha Highway	\$837,500	03-12-2021	97%	91%	Conventional 12500

[66-561 Kamehameha Highway](#) - MLS#: [202028736](#) - Original price was \$917,000 - Heart of Haleiwa! Enjoy every sunset from this huge lanai with your favorite drink in hand. Large board shaper's shed has lots of storage. Hop right in the orchid lined outdoor shower when you get back from the ocean. Wander over to all the restaurants in Haleiwa in just a few minutes. Need to commute to town or airport, it's a mere 30 minutes from this home. The interior has been meticulously restored and is ready for you to move right in. Expansion minded? This large lot allows for duplex or just pop in an ADU for guests or additional office space. Private showings available now. **Region:** North Shore **Neighborhood:** Waialua **Condition:** Above Average **Parking:** 3 Car+, Driveway **Total Parking:** 6 **View:** Garden, Marina/Canal, Mountain, Sunset **Frontage:** Other, Stream/Canal **Pool:** None **Zoning:** 05 - R-5 Residential District **Sale Conditions:** None **Schools:** , , * [Request Showing, Photos, History, Maps, Deed, Watch List, Tax Info](#)

DOM = Days on Market