

**91-6221 Kapolei Parkway Unit 15, Ewa Beach 96706 \* \$735,000**

Sold Price: \$765,000

Sold Date: 01-15-2021

Sold Ratio: 104%

Beds: **3**

MLS#: **202029346, FS**

Year Built: **2014**

Bath: **2/1**

Status: **Sold**

Remodeled:

Living Sq. Ft.: **1,401**

List Date & DOM: **11-19-2020 & 6**

Total Parking: **4**

Land Sq. Ft.: **3,915**

Condition: **Above Average**

[Assessed Value](#)

Lanai Sq. Ft.: **30**

Frontage:

Building: **\$326,500**

Sq. Ft. Other: **0**

Tax/Year: **\$158/2020**

Land: **\$315,200**

Total Sq. Ft. **1,431**

Neighborhood: **Ewa Gen Parkside**

Total: **\$641,700**

Maint./Assoc. **\$350 / \$39**

[Flood Zone](#): **Zone D - Tool**

Stories / CPR: **Two / Yes**

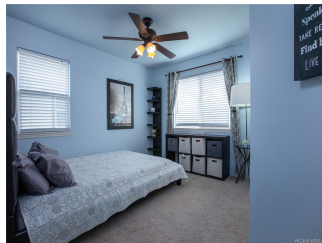
Parking: **3 Car+, Driveway, Garage**

Frontage:

[Zoning](#): **11 - A-1 Low Density Apartment**

View: **None**

**Public Remarks:** This 6 yr new home in the popular Parkside by Gentry won't last long! Newer water resistant Vinyl laminate flooring on the first level compliments the large island in the kitchen, made for modern dining & even distance learning. There's a wonderful yard w/no back neighbors, covered lanai, generous amount of walnut cabinets which highlight the Corian countertops perfectly, plus a spacious Master bedroom with a walk-in closet & ensuite bathroom with dual vanity sinks. 5 owned Photovoltaic panels on NEM metering will help you save on electricity costs, there's central AC to keep you cool, a NEST system (no monthly charge) for peace of mind, + parking for up to 4 cars. The maintenance fees are extremely low, and yet it includes use of the community pool. Private showings only Nov 20 - 23. **Sale Conditions:** None **Schools:** [Keoneula, Ewa Makai, Campbell](#) \* [Request Showing](#), [Photos](#), [History](#), [Maps](#), [Deed](#), [Watch List](#), [Tax Info](#)





Address	Price	Bd & Bth	Living / Avg.	Land   Avg.	DOM
<a href="#">91-6221 Kapolei Parkway 15</a>	<a href="#">\$735,000</a>	3 & 2/1	1,401   \$525	3,915   \$188	6

Address	Tax   Maint.   Ass.	Assessed Land	Assessed Building	Assessed Total	Ratio	Year & Remodeled
<a href="#">91-6221 Kapolei Parkway 15</a>	\$158   \$350   \$39	\$315,200	\$326,500	\$641,700	115%	2014 & NA

Address	Sold Price	Sold Date	Sold Ratio	Original Ratio	Sold Terms
<a href="#">91-6221 Kapolei Parkway 15</a>	\$765,000	01-15-2021	104%	104%	VA

[91-6221 Kapolei Parkway 15](#) - MLS#: [202029346](#) - This 6 yr new home in the popular Parkside by Gentry won't last long! Newer water resistant Vinyl laminate flooring on the first level compliments the large island in the kitchen, made for modern dining & even distance learning. There's a wonderful yard w/no back neighbors, covered lanai, generous amount of walnut cabinets which highlight the Corian countertops perfectly, plus a spacious Master bedroom with a walk-in closet & ensuite bathroom with dual vanity sinks. 5 owned Photovoltaic panels on NEM metering will help you save on electricity costs, there's central AC to keep you cool, a NEST system (no monthly charge) for peace of mind, + parking for up to 4 cars. The maintenance fees are extremely low, and yet it includes use of the community pool. Private showings only Nov 20 - 23.

**Region:** Ewa Plain **Neighborhood:** Ewa Gen Parkside **Condition:** Above Average **Parking:** 3 Car+, Driveway, Garage **Total Parking:** 4 **View:** None **Frontage:** **Pool:** Community Association Pool **Zoning:** 11 - A-1 Low Density Apartment **Sale Conditions:** None **Schools:** [Keoneula](#), [Ewa Makai](#), [Campbell](#) \* [Request Showing](#), [Photos](#), [History](#), [Maps](#), [Deed](#), [Watch List](#), [Tax Info](#)

DOM = Days on Market