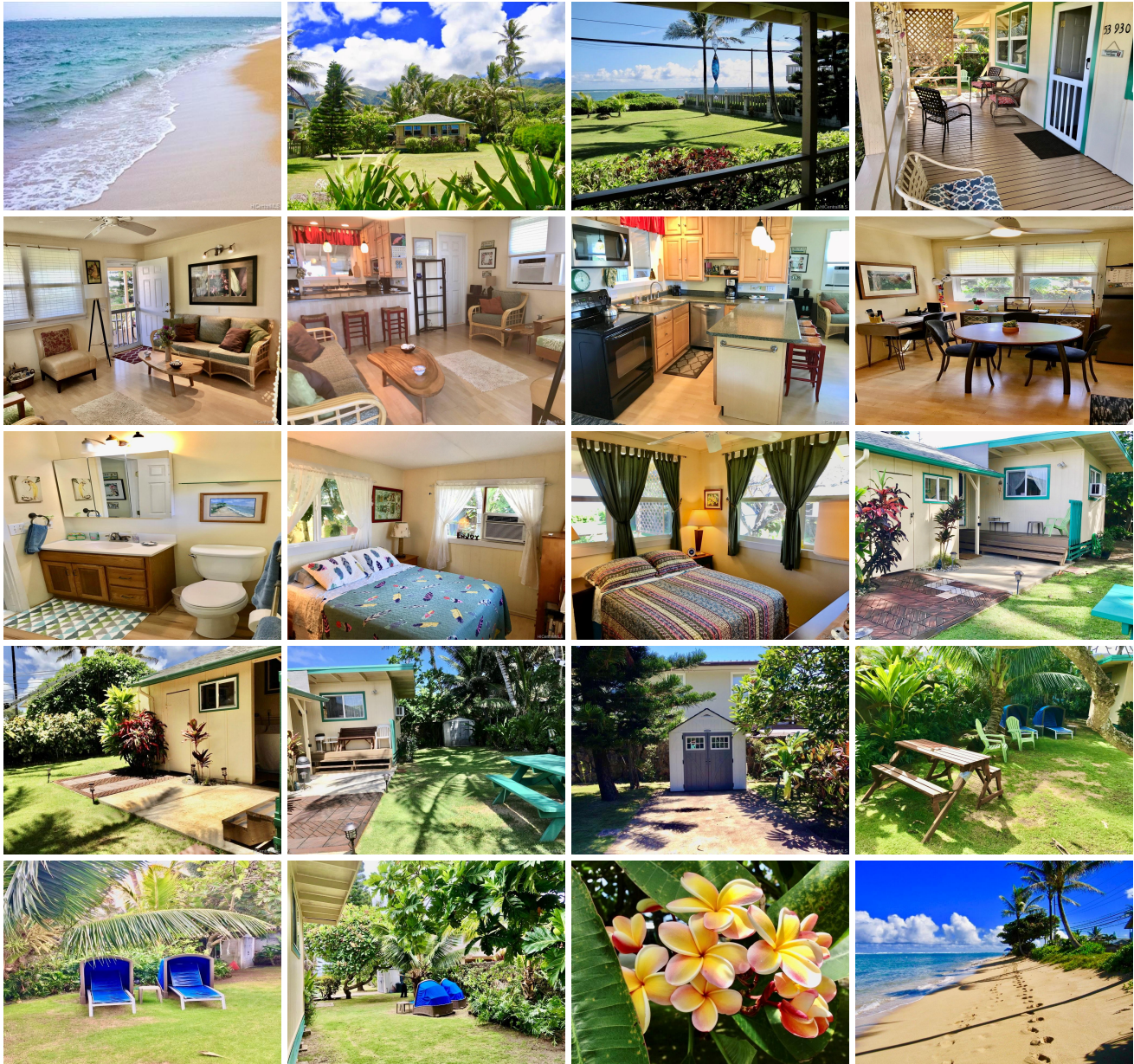


**53-930 Kamehameha Highway, Hauula 96717 \* \$849,000**

Sold Price: \$822,500	Sold Date: 05-24-2021	Sold Ratio: 97%
Beds: <b>2</b>	MLS#: <b>202029771, FS</b>	Year Built: <b>1946</b>
Bath: <b>1/1</b>	Status: <b>Sold</b>	Remodeled: <b>2004</b>
Living Sq. Ft.: <b>681</b>	List Date & DOM: <b>11-23-2020 &amp; 84</b>	Total Parking: <b>3</b>
Land Sq. Ft.: <b>11,458</b>	Condition: <b>Above Average</b>	<a href="#">Assessed Value</a>
Lanai Sq. Ft.: <b>275</b>	Frontage: <b>Ocean, Other, Sandy Beach</b>	Building: <b>\$99,200</b>
Sq. Ft. Other: <b>116</b>	Tax/Year: <b>\$182/2020</b>	Land: <b>\$523,900</b>
Total Sq. Ft. <b>1,072</b>	Neighborhood: <b>Hauula</b>	Total: <b>\$623,100</b>
Maint./Assoc. <b>\$0 / \$0</b>	<a href="#">Flood Zone</a> : <b>Zone VE - Tool</b>	Stories / CPR: <b>One / No</b>
Parking: <b>3 Car+, Driveway</b>	Frontage: <b>Ocean, Other, Sandy Beach</b>	View: <b>Coastline, Mountain, Ocean, Sunrise</b>
<a href="#">Zoning</a> : <b>05 - R-5 Residential District</b>		

**Public Remarks:** Known by family and friends as Sunrise Cottage, its Island Living where views are the Blue Pacific Ocean. It's hard to beat daily living with the sounds of the beating surf in a relaxed huge private tropical flora yard. Endless entertainment awaits you and your family from the large yard with a BBQ area and just a few steps away to enjoy a sandy beach for ocean sports activities. This property offers a roomy light, airy interior with 2 bedrooms, 1 full bath inside, one half at the outdoor BBQ area, galley kitchen, major appliances, a dining area, and a living room that can sit 9 people comfortably. An added bonus is the big lanai to continue your outdoor entertaining rain or shine. Over 11K s.f. the zoning on this property does allow for options including building another detached bldg **Sale Conditions:** None **Schools:** [Hauula](#), [Kahuku](#), [Kahuku](#) \* [Request Showing](#), [Photos](#), [History](#), [Maps](#), [Deed](#), [Watch List](#), [Tax Info](#)





Address	Price	Bd & Bth	Living / Avg.	Land   Avg.	DOM
<a href="#">53-930 Kamehameha Highway</a>	<a href="#">\$849,000</a>	2 & 1/1	681   \$1,247	11,458   \$74	84

Address	Tax   Maint.   Ass.	Assessed Land	Assessed Building	Assessed Total	Ratio	Year & Remodeled
<a href="#">53-930 Kamehameha Highway</a>	\$182   \$0   \$0	\$523,900	\$99,200	\$623,100	136%	1946 & 2004

Address	Sold Price	Sold Date	Sold Ratio	Original Ratio	Sold Terms
<a href="#">53-930 Kamehameha Highway</a>	\$822,500	05-24-2021	97%	97%	Conventional 7500

<a href="#">53-930 Kamehameha Highway</a> - MLS#: <a href="#">202029771</a> - Known by family and friends as Sunrise Cottage, its Island Living where views are the Blue Pacific Ocean. It's hard to beat daily living with the sounds of the beating surf in a relaxed huge private tropical flora yard. Endless entertainment awaits you and your family from the large yard with a BBQ area and just a few steps away to enjoy a sandy beach for ocean sports activities. This property offers a roomy light, airy interior with 2 bedrooms, 1 full bath inside, one half at the outdoor BBQ area, galley kitchen, major appliances, a dining area, and a living room that can sit 9 people comfortably. An added bonus is the big lanai to continue your outdoor entertaining rain or shine. Over 11K s.f. the zoning on this property does allow for options including building another detached bldg <b>Region:</b> Kaneohe <b>Neighborhood:</b> Hauula <b>Condition:</b> Above Average <b>Parking:</b> 3 Car+, Driveway <b>Total Parking:</b> 3 <b>View:</b> Coastline, Mountain, Ocean, Sunrise <b>Frontage:</b> Ocean,Other,Sandy Beach <b>Pool:</b> None <b>Zoning:</b> 05 - R-5 Residential District <b>Sale Conditions:</b> None <b>Schools:</b> <a href="#">Hauula</a> , <a href="#">Kahuku</a> , <a href="#">Kahuku</a> * <a href="#">Request Showing</a> , <a href="#">Photos</a> , <a href="#">History</a> , <a href="#">Maps</a> , <a href="#">Deed</a> , <a href="#">Watch List</a> , <a href="#">Tax Info</a>					
--	--	--	--	--	--

DOM = Days on Market