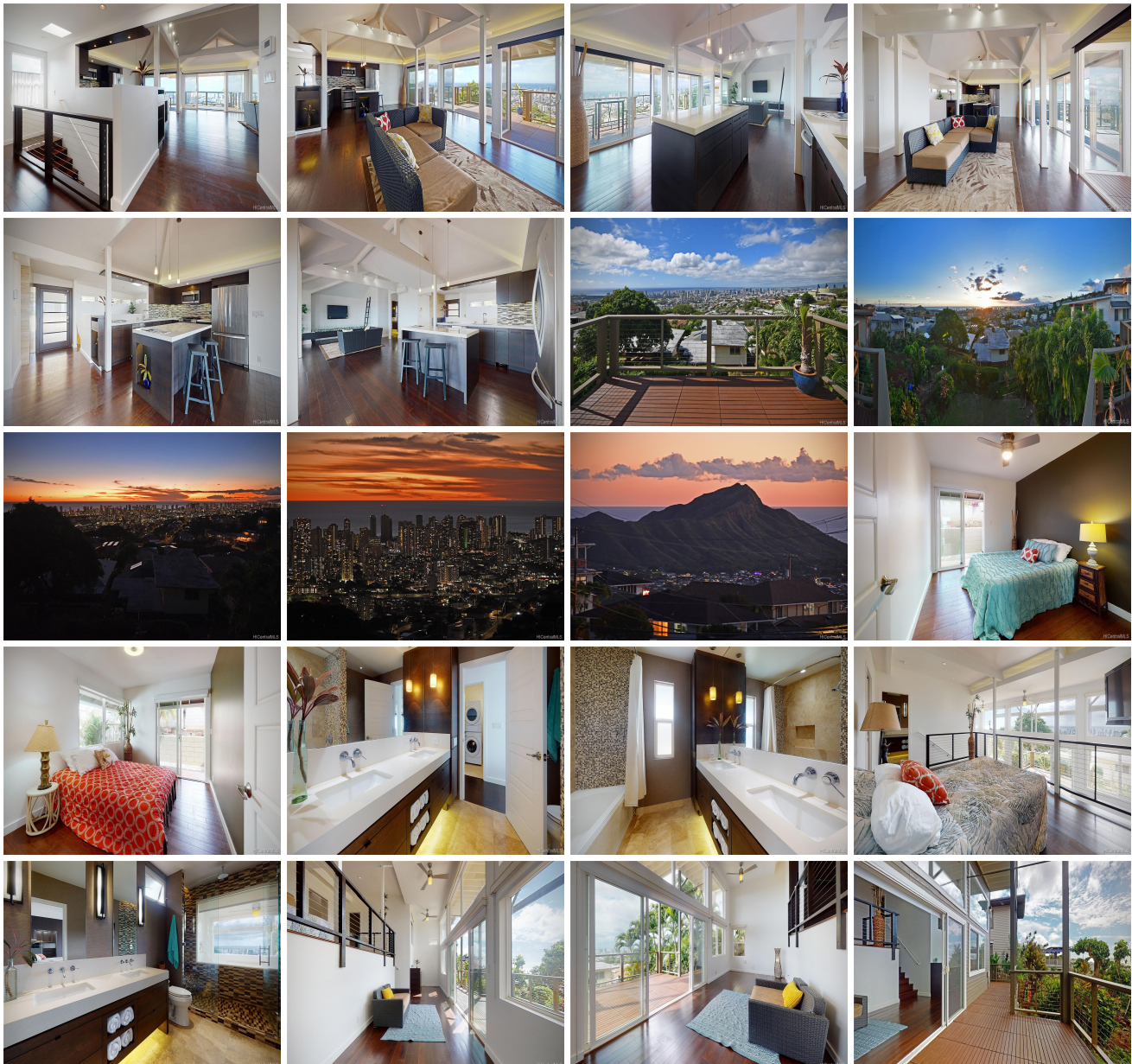
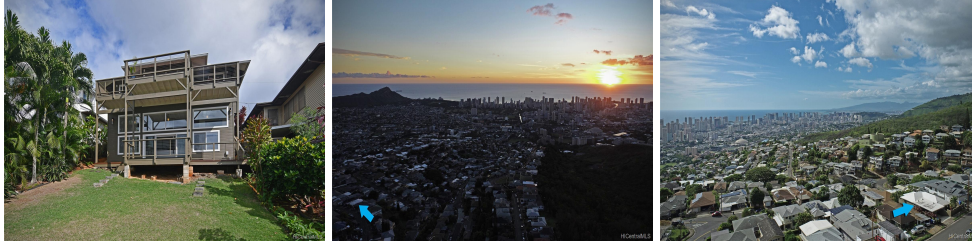


2150 St Louis Drive, Honolulu 96816 * \$1,865,000

Sold Price: \$1,825,000	Sold Date: 02-16-2021	Sold Ratio: 98%
Beds: 3	MLS#: 202031722, FS	Year Built: 1951
Bath: 2/0	Status: Sold	Remodeled: 2011
Living Sq. Ft.: 2,081	List Date & DOM: 12-08-2020 & 37	Total Parking: 2
Land Sq. Ft.: 5,750	Condition: Excellent	Assessed Value
Lanai Sq. Ft.: 520	Frontage:	Building: \$853,100
Sq. Ft. Other: 0	Tax/Year: \$489/2020	Land: \$963,900
Total Sq. Ft. 2,601	Neighborhood: St. Louis	Total: \$1,817,000
Maint./Assoc. \$0 / \$0	Flood Zone : Zone X - Tool	Stories / CPR: Two / No
Parking: 2 Car, Carport	Frontage:	
Zoning : 05 - R-5 Residential District	View: City, Coastline, Diamond Head, Mountain, Ocean, Sunrise, Sunset	

Public Remarks: ONE OF THE BEST VIEW HOMES ON THE ISLAND! An award-winning, modern home renovation (designed by MCYIA Interior Architecture and Design) with breathtaking views of the City, Diamond Head, Ocean, Sunset, and more. The bi-level Master Suite is its own private retreat complete with a wet bar, view deck, gorgeous view from bed, beautiful master bathroom with built-in bench seating, rain shower, suspended cabinets, and wall mounted faucet fixtures. Vaulted ceilings, hardwood/marble floors, and elegant lighting provide a graceful and relaxing atmosphere. Beautiful multi-level home with separate entrances for added flexibility/options. Well-priced executive home, just 2.5% above Assessed Value. Click on "Virtual Home Tour" link for a closer look. **Sale Conditions:** None **Schools:** [Hokulani](#) , [Kaimuki](#) * [Request Showing](#), [Photos](#), [History](#), [Maps](#), [Deed](#), [Watch List](#), [Tax Info](#)





Address	Price	Bd & Bth	Living / Avg.	Land Avg.	DOM
2150 St Louis Drive	\$1,865,000	3 & 2/0	2,081 \$896	5,750 \$324	37

Address	Tax Maint. Ass.	Assessed Land	Assessed Building	Assessed Total	Ratio	Year & Remodeled
2150 St Louis Drive	\$489 \$0 \$0	\$963,900	\$853,100	\$1,817,000	103%	1951 & 2011

Address	Sold Price	Sold Date	Sold Ratio	Original Ratio	Sold Terms
2150 St Louis Drive	\$1,825,000	02-16-2021	98%	98%	Cash

[2150 St Louis Drive](#) - MLS#: [202031722](#) - ONE OF THE BEST VIEW HOMES ON THE ISLAND! An award-winning, modern home renovation (designed by MCYIA Interior Architecture and Design) with breathtaking views of the City, Diamond Head, Ocean, Sunset, and more. The bi-level Master Suite is its own private retreat complete with a wet bar, view deck, gorgeous view from bed, beautiful master bathroom with built-in bench seating, rain shower, suspended cabinets, and wall mounted faucet fixtures. Vaulted ceilings, hardwood/marble floors, and elegant lighting provide a graceful and relaxing atmosphere. Beautiful multi-level home with separate entrances for added flexibility/options. Well-priced executive home, just 2.5% above Assessed Value. Click on "Virtual Home Tour" link for a closer look. **Region:** Diamond Head **Neighborhood:** St. Louis **Condition:** Excellent **Parking:** 2 Car, Carport **Total Parking:** 2 **View:** City, Coastline, Diamond Head, Mountain, Ocean, Sunrise, Sunset **Frontage:** **Pool:** None **Zoning:** 05 - R-5 Residential District **Sale Conditions:** None **Schools:** [Hokulani](#), [Kaimuki](#) * [Request Showing](#), [Photos](#), [History](#), [Maps](#), [Deed](#), [Watch List](#), [Tax Info](#)

DOM = Days on Market