

51-110 Kaaawa Park Lane Unit 10, Kaaawa 96730 * \$799,000 * Originally \$779,000

Beds: **3**
Bath: **2/0**
Living Sq. Ft.: **1,360**
Land Sq. Ft.: **7,930**

Lanai Sq. Ft.: **160**
Sq. Ft. Other: **0**
Total Sq. Ft. **1,520**
Maint./Assoc. **\$0 / \$85**
Parking: **3 Car+**

Zoning: 05 - R-5 Residential District

MLS#: **202032258, FS**
Status: **Cancelled**
List Date & DOM: **12-30-2020 & 34**
Condition: **Above Average, Average**

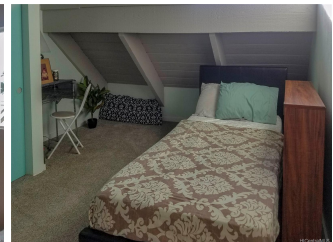
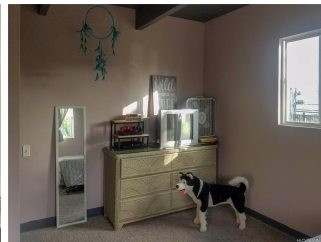
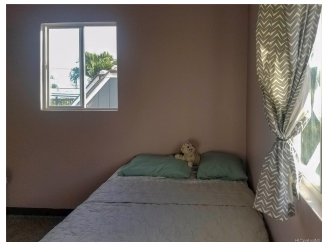
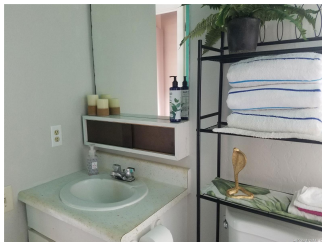
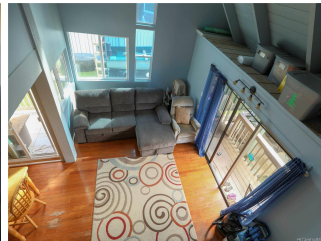
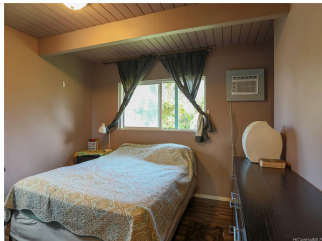
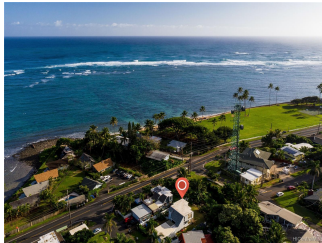
Frontage:
Tax/Year: **\$207/2020**
Neighborhood: **Kaaawa**
Flood Zone: Zone X - Tool

Year Built: **1972**
Remodeled: **2017**
Total Parking: **2**
[Assessed Value](#)
Building: **\$208,100**
Land: **\$500,600**
Total: **\$708,700**
Stories / CPR: **Two / Yes**

Frontage:

View: **Mountain**

Public Remarks: With majestic views of the Ko'olau in the backyard and the turquoise ocean across the street it's no wonder you'll want to call this home. This well maintained and kid friendly lane is across the street from Swanzy's beach park which features playgrounds, basketball courts and a wide open field. The yard has an array of fruit trees including banana, sour sop, lychee, star apple, starfruit, chico, wi apple, and loquat. Look them up! The exterior just got a brand new paint coat and the interior was painted and remodeled in the past two years. With a two car garage your vehicles will be protected from the elements and you'll have room for storage. Beautiful are in a great neighborhood with friendly neighbors. Call your agent today! **Sale Conditions:** Subject To Replacement Property **Schools:** [Kaaawa](#), [Kahuku](#), [Kahuku](#) * [Request Showing](#), [Photos](#), [History](#), [Maps](#), [Deed](#), [Watch List](#), [Tax Info](#)





Address	Price	Bd & Bth	Living / Avg.	Land Avg.	DOM
51-110 Kaaawa Park Lane 10	\$799,000	3 & 2/0	1,360 \$588	7,930 \$101	34

Address	Tax Maint. Ass.	Assessed Land	Assessed Building	Assessed Total	Ratio	Year & Remodeled
51-110 Kaaawa Park Lane 10	\$207 \$0 \$85	\$500,600	\$208,100	\$708,700	113%	1972 & 2017

[51-110 Kaaawa Park Lane 10](#) - MLS#: [202032258](#) - Original price was \$779,000 - With majestic views of the Ko'olaus in the backyard and the turquoise ocean across the street it's no wonder you'll want to call this home. This well maintained and kid friendly lane is across the street from Swanzy's beach park which features playgrounds, basketball courts and a wide open field. The yard has an array of fruit trees including banana, sour sop, lychee, star apple, starfruit, chico, wi apple, and loquat. Look them up! The exterior just got a brand new paint coat and the interior was painted and remodeled in the past two years. With a two car garage your vehicles will be protected from the elements and you'll have room for storage. Beautiful are in a great neighborhood with friendly neighbors. Call your agent today! **Region:** Kaneohe **Neighborhood:** Kaaawa **Condition:** Above Average, Average **Parking:** 3 Car+ **Total Parking:** 2 **View:** Mountain **Frontage:** **Pool:** None **Zoning:** 05 - R-5 Residential District **Sale Conditions:** Subject To Replacement Property **Schools:** [Kaaawa](#), [Kahuku](#), [Kahuku](#) * [Request Showing](#), [Photos](#), [History](#), [Maps](#), [Deed](#), [Watch List](#), [Tax Info](#)

DOM = Days on Market