

54-269 Kamehameha Highway Unit A, Hauula 96717 * \$599,000 * Originally \$625,000

Sold Price: \$605,000

Sold Date: 06-15-2021

Sold Ratio: 101%

Beds: **3**

MLS#: **202101260**, FS

Year Built: **1976**

Bath: **1/0**

Status: **Sold**

Remodeled: **2020**

Living Sq. Ft.: **748**

List Date & DOM: **01-20-2021 & 93**

Total Parking: **2**

Land Sq. Ft.: **9,009**

Condition: **Above Average, Excellent**

[Assessed Value](#)

Lanai Sq. Ft.: **110**

Frontage: **Ocean**

Building: **\$158,900**

Sq. Ft. Other: **0**

Tax/Year: **\$131/2020**

Land: **\$390,300**

Total Sq. Ft. **858**

Neighborhood: **Hauula**

Total: **\$549,200**

Maint./Assoc. **\$336 / \$0**

[Flood Zone](#): **Zone X - Tool**

Stories / CPR: **One / Yes**

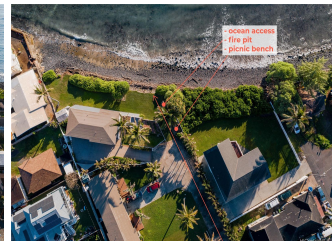
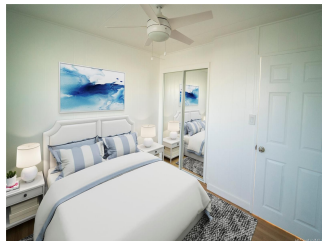
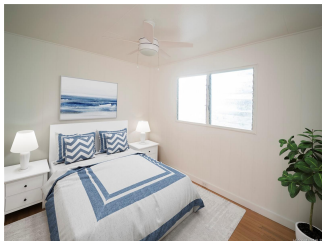
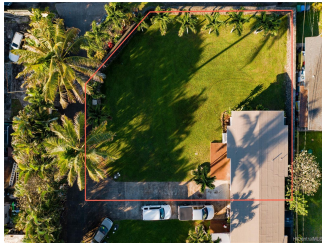
Parking: **2 Car, Driveway**

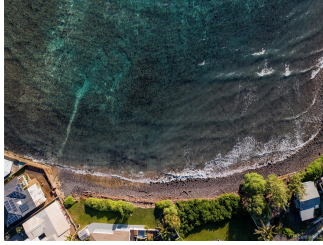
Frontage: **Ocean**

[Zoning](#): **05 - R-5 Residential District**

View: **Mountain, Ocean**

Public Remarks: With over 12,000 sqft of land and a complete refresh to the home this is rare deal! Boasting refinished hardwood floors, a complete paint job, new lighting, fans and more, this cozy beachside home will have you wanting to stay put. No more than 30 seconds up the road you'll find the Hau'ula Shopping center with groceries, medical offices, restaurants, the post office and more. Gorgeous, sandy beaches are only a minute up the road at Kakela beach park and world famous North Shore beaches are just 15 minutes beyond that. It is a perfect starter home in a friendly little nine unit development with ocean access, great fishing and diving, and a community fire pit, picnic bench and prep area just feet away from the ocean. **Sale Conditions:** None **Schools:** [Hauula](#), [Kahuku](#), [Kahuku](#) * [Request Showing](#), [Photos](#), [History](#), [Maps](#), [Deed](#), [Watch List](#), [Tax Info](#)





Address	Price	Bd & Bth	Living / Avg.	Land Avg.	DOM
54-269 Kamehameha Highway A	\$599,000	3 & 1/0	748 \$801	9,009 \$66	93

Address	Tax Maint. Ass.	Assessed Land	Assessed Building	Assessed Total	Ratio	Year & Remodeled
54-269 Kamehameha Highway A	\$131 \$336 \$0	\$390,300	\$158,900	\$549,200	109%	1976 & 2020

Address	Sold Price	Sold Date	Sold Ratio	Original Ratio	Sold Terms
54-269 Kamehameha Highway A	\$605,000	06-15-2021	101%	97%	VA

[54-269 Kamehameha Highway A](#) - MLS#: [202101260](#) - Original price was \$625,000 - With over 12,000 sqft of land and a complete refresh to the home this is rare deal! Boasting refinished hardwood floors, a complete paint job, new lighting, fans and more, this cozy beachside home will have you wanting to stay put. No more than 30 seconds up the road you'll find the Hau'ula Shopping center with groceries, medical offices, restaurants, the post office and more. Gorgeous, sandy beaches are only a minute up the road at Kakela beach park and world famous North Shore beaches are just 15 minutes beyond that. It is a perfect starter home in a friendly little nine unit development with ocean access, great fishing and diving, and a community fire pit, picnic bench and prep area just feet away from the ocean. **Region:** Kaneohe **Neighborhood:** Hauula **Condition:** Above Average, Excellent **Parking:** 2 Car, Driveway **Total Parking:** 2 **View:** Mountain, Ocean **Frontage:** Ocean **Pool:** None **Zoning:** 05 - R-5 Residential District **Sale Conditions:** None **Schools:** [Hauula](#), [Kahuku](#), [Kahuku](#) * [Request Showing](#), [Photos](#), [History](#), [Maps](#), [Deed](#), [Watch List](#), [Tax Info](#)

DOM = Days on Market