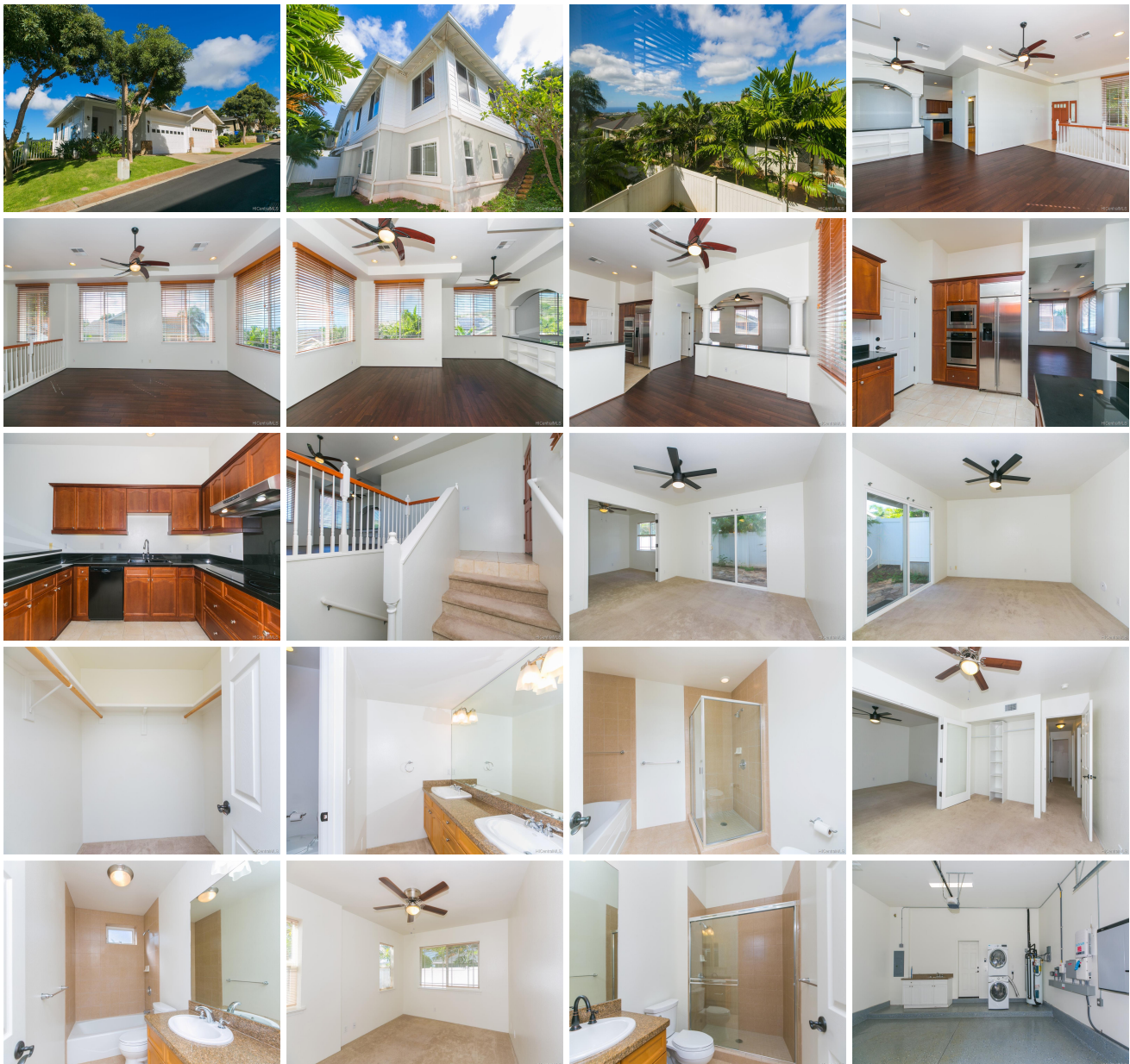


Hoolu Landing at Makakilo 92-1085 Palahia Street Unit D, Kapolei 96707 * \$745,000

Sold Price: \$755,000	Sold Date: 05-10-2021	Sold Ratio: 101%
Beds: 3	MLS#: 202101493, FS	Year Built: 2006
Bath: 3/0	Status: Sold	Remodeled:
Living Sq. Ft.: 1,875	List Date & DOM: 01-25-2021 & 9	Total Parking: 2
Land Sq. Ft.: 3,017	Condition: Excellent	Assessed Value
Lanai Sq. Ft.: 100	Frontage:	Building: \$355,500
Sq. Ft. Other: 0	Tax/Year: \$175/2020	Land: \$342,100
Total Sq. Ft. 1,975	Neighborhood: Makakilo-upper	Total: \$697,600
Maint./Assoc. \$355 / \$11	Flood Zone : Zone D - Tool	Stories / CPR: Split Level / Yes
Parking: 2 Car, Garage	Frontage:	
Zoning : 05 - R-5 Residential District	View: Mountain, Ocean	

Public Remarks: Beautiful home in Ho`olu Landing at Makakilo shows like a model!! Freshly painted interior, private landscaped back yard. Large open floor plan and a kitchen even a chef would appreciate with all stainless steel appliances. Central AC Leased Photovoltaic System with two Tesla Batteries, Solar Water Heater, Garage Floor coated with Epoxy UFlek Protection. Small private landscaped park for residents of Ho`olu Landing, guest parking. Enjoy all the conveniences of the Second City "Kapolei" which includes the new "Kamakani Shopping Mall with Theater, Dining Entertainment, Macy's and so much more. Water Park, White Sand Blue Water Beaches & Ko`olina Resort with Disney's Aulani Hotel nearby too. Come home to Ho`olu Landing at Makakilo! **Sale Conditions:** None **Schools:** , , * [Request Showing](#), [Photos](#), [History](#), [Maps](#), [Deed](#), [Watch List](#), [Tax Info](#)





Address	Price	Bd & Bth	Living / Avg.	Land Avg.	DOM
92-1085 Palahia Street D	\$745,000	3 & 3/0	1,875 \$397	3,017 \$247	9

Address	Tax Maint. Ass.	Assessed Land	Assessed Building	Assessed Total	Ratio	Year & Remodeled
92-1085 Palahia Street D	\$175 \$355 \$11	\$342,100	\$355,500	\$697,600	107%	2006 & NA

Address	Sold Price	Sold Date	Sold Ratio	Original Ratio	Sold Terms
92-1085 Palahia Street D	\$755,000	05-10-2021	101%	101%	VA 3000

[92-1085 Palahia Street D](#) - MLS#: [202101493](#) - Beautiful home in Ho`olu Landing at Makakilo shows like a model!! Freshly painted interior, private landscaped back yard. Large open floor plan and a kitchen even a chef would appreciate with all stainless steel appliances. Central AC Leased Photovoltaic System with two Tesla Batteries, Solar Water Heater, Garage Floor coated with Epoxy UFlek Protection. Small private landscaped park for residents of Ho`olu Landing, guest parking. Enjoy all the conveniences of the Second City "Kapolei" which includes the new "Kamakani Shopping Mall with Theater, Dining Entertainment, Macy's and so much more. Water Park, White Sand Blue Water Beaches & Ko`olina Resort with Disney's Aulani Hotel nearby too. Come home to Ho`olu Landing at Makakilo! **Region:** Makakilo **Neighborhood:** Makakilo-upper **Condition:** Excellent **Parking:** 2 Car, Garage **Total Parking:** 2 **View:** Mountain, Ocean **Frontage:** **Pool:** None **Zoning:** 05 - R-5 Residential District **Sale Conditions:** None **Schools:** , , * [Request Showing](#), [Photos](#), [History](#), [Maps](#), [Deed](#), [Watch List](#), [Tax Info](#)

DOM = Days on Market