

66-158 Haleiwa Road Unit A & B, Haleiwa 96712 * \$3,350,000 * Originally \$3,495,000

Beds: **5**
Bath: **5/1**
Living Sq. Ft.: **3,384**
Land Sq. Ft.: **9,608**
Lanai Sq. Ft.: **508**
Sq. Ft. Other: **600**
Total Sq. Ft. **4,492**
Maint./Assoc. **\$0 / \$0**
Parking: **3 Car+, Driveway, Garage**

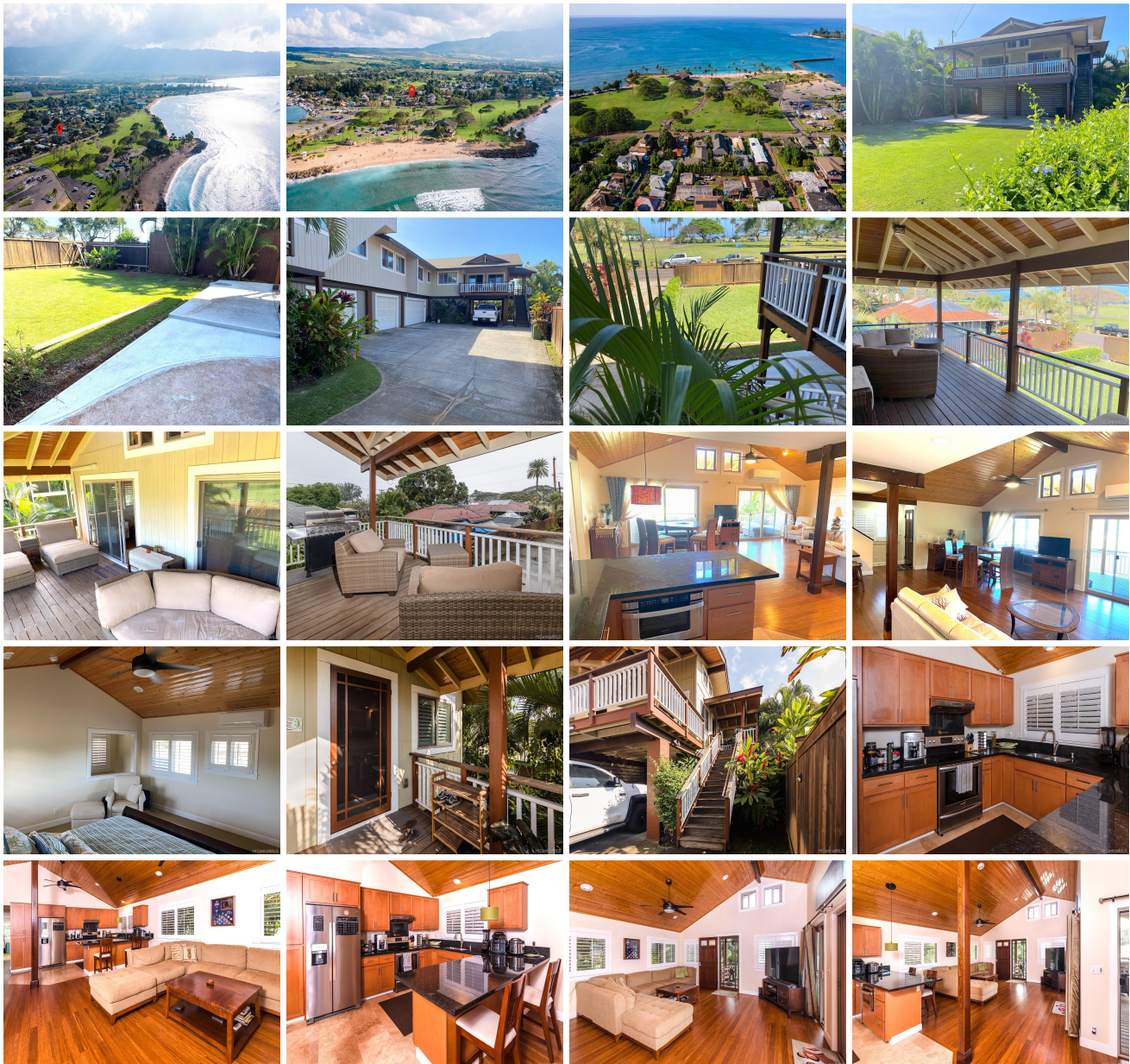
MLS#: **202109501, FS**
Status: **Cancelled**
List Date & DOM: **04-21-2021 & 176**
Condition: **Excellent**
Frontage:
Tax/Year: **\$1,740/2021**
Neighborhood: **Haleiwa**
Flood Zone: **Zone VE - Tool**
Frontage:

Year Built: **2012**
Remodeled:
Total Parking: **8**
Assessed Value
Building: **\$914,200**
Land: **\$1,655,500**
Total: **\$2,569,700**
Stories / CPR: **Two / Yes**

Zoning: **05 - R-5 Residential District**

View: **Coastline, Garden, Mountain, Ocean, Sunset**

Public Remarks: This 5 bedroom 4.5 bath custom built home on oversized 9608 sq. ft lot in one of the North Shore's best locations is now available. Located directly across from the world famous Ali'i Beach Park in Haleiwa, this landscaped, fully fenced, gated and secure property is a rare find. With three full size garages, a carport, and lots of covered secure storage on the ground floor, this home has it all. Constructed from the highest quality materials, built in 2012 and still shows like a brand new home. Steps to the beach, the park, Haleiwa Town and in the heart of the North Shore. This is a 2 unit CPR being sold together. Sale includes both TMK 1-6-6-3-5-45-0001 and 1-6-6-3-5-0002. **Sale Conditions:** None **Schools:** [Haleiwa](#), [Waialua](#), [Waialua](#) * [Request Showing](#), [Photos](#), [History](#), [Maps](#), [Deed](#), [Watch List](#), [Tax Info](#)





Address	Price	Bd & Bth	Living / Avg.	Land Avg.	DOM
66-158 Haleiwa Road A & B	\$3,350,000	5 & 5/1	3,384 \$990	9,608 \$349	176

Address	Tax Maint. Ass.	Assessed Land	Assessed Building	Assessed Total	Ratio	Year & Remodeled
66-158 Haleiwa Road A & B	\$1,740 \$0 \$0	\$1,655,500	\$914,200	\$2,569,700	130%	2012 & NA

[66-158 Haleiwa Road A & B](#) - MLS#: [202109501](#) - Original price was \$3,495,000 - This 5 bedroom 4.5 bath custom built home on oversized 9608 sq. ft lot in one of the North Shore's best locations is now available. Located directly across from the world famous Ali'i Beach Park in Haleiwa, this landscaped, fully fenced, gated and secure property is a rare find. With three full size garages, a carport, and lots of covered secure storage on the ground floor, this home has it all. Constructed from the highest quality materials, built in 2012 and still shows like a brand new home. Steps to the beach, the park, Haleiwa Town and in the heart of the North Shore. This is a 2 unit CPR being sold together. Sale includes both TMK 1-6-6-3-5-45-0001 and 1-6-6-3-5-0002. **Region:** North Shore **Neighborhood:** Haleiwa **Condition:** Excellent **Parking:** 3 Car+, Driveway, Garage **Total Parking:** 8 **View:** Coastline, Garden, Mountain, Ocean, Sunset **Frontage:** Pool: None **Zoning:** 05 - R-5 Residential District **Sale Conditions:** None **Schools:** [Haleiwa](#), [Waialua](#), [Waialua](#) * [Request Showing](#), [Photos](#), [History](#), [Maps](#), [Deed](#), [Watch List](#), [Tax Info](#)

DOM = Days on Market