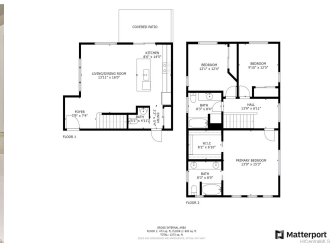
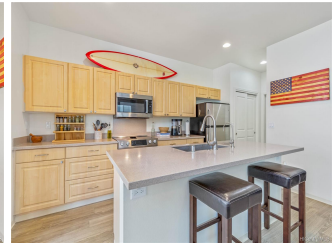


## **91-6221 Kapolei Parkway Unit 334, Ewa Beach 96706 \* \$820,000**

Sold Price: \$865,000	Sold Date: 07-06-2021	Sold Ratio: 105%
Beds: <b>3</b>	MLS#: <b><u>202112005</u>, FS</b>	Year Built: <b>2014</b>
Bath: <b>2/1</b>	Status: <b>Sold</b>	Remodeled:
Living Sq. Ft.: <b>1,401</b>	List Date & DOM: <b>05-14-2021 &amp; 13</b>	Total Parking: <b>4</b>
Land Sq. Ft.: <b>3,752</b>	Condition: <b>Excellent</b>	<a href="#">Assessed Value</a>
Lanai Sq. Ft.: <b>0</b>	Frontage:	Building: <b>\$325,800</b>
Sq. Ft. Other: <b>85</b>	Tax/Year: <b>\$187/2020</b>	Land: <b>\$313,700</b>
Total Sq. Ft. <b>1,486</b>	Neighborhood: <b>Ewa Gen Parkside</b>	Total: <b>\$639,500</b>
Maint./Assoc. <b>\$350 / \$39</b>	<a href="#">Flood Zone</a> : <b>Zone D - Tool</b>	Stories / CPR: <b>Two / Yes</b>
Parking: <b>3 Car+, Driveway, Garage, Street</b>	Frontage:	
<a href="#">Zoning</a> : <b>11 - A-1 Low Density Apartment</b>	View: <b>Garden</b>	

**Public Remarks:** This Ewa Gentry Parkside home has 3br/2.5ba with a large 2 car garage and room for 2 cars in the driveway. Open the front door to a spacious, open concept, living area and kitchen island with room for cooking and entertaining. The fenced back yard is landscaped, low maintenance and has an intimate space to relax or dine outdoors. Upstairs are 3 bedrooms and 2 bathrooms. The primary suite includes a large walk-in closet and dual sinks in the bathroom. There is Solar water, a Nest system and 19 panel leased Vivint photovoltaic system. This neighborhood has a beautiful community pool and ample guest parking nearby. Maint. Fee Includes: front yard service, pool, insurance, water and sewer. Located in Ewa Beach, Parkside is convenient for shopping, schools, military bases and beaches. **Sale Conditions:** None  
**Schools:** [Keoneula](#), [Ewa Makai](#), [Campbell](#) \* [Request Showing](#), [Photos](#), [History](#), [Maps](#), [Deed](#), [Watch List](#), [Tax Info](#)





Address	Price	Bd & Bth	Living / Avg.	Land   Avg.	DOM
<a href="#">91-6221 Kapolei Parkway 334</a>	<a href="#">\$820,000</a>	3 & 2/1	1,401   \$585	3,752   \$219	13

Address	Tax   Maint.   Ass.	Assessed Land	Assessed Building	Assessed Total	Ratio	Year & Remodeled
<a href="#">91-6221 Kapolei Parkway 334</a>	\$187   \$350   \$39	\$313,700	\$325,800	\$639,500	128%	2014 & NA

Address	Sold Price	Sold Date	Sold Ratio	Original Ratio	Sold Terms
<a href="#">91-6221 Kapolei Parkway 334</a>	\$865,000	07-06-2021	105%	105%	VA

[91-6221 Kapolei Parkway 334](#) - MLS#: [202112005](#) - This Ewa Gentry Parkside home has 3br/2.5ba with a large 2 car garage and room for 2 cars in the driveway. Open the front door to a spacious, open concept, living area and kitchen island with room for cooking and entertaining. The fenced back yard is landscaped, low maintenance and has an intimate space to relax or dine outdoors. Upstairs are 3 bedrooms and 2 bathrooms. The primary suite includes a large walk-in closet and dual sinks in the bathroom. There is Solar water, a Nest system and 19 panel leased Vivint photovoltaic system. This neighborhood has a beautiful community pool and ample guest parking nearby. Maint. Fee Includes: front yard service, pool, insurance, water and sewer. Located in Ewa Beach, Parkside is convenient for shopping, schools, military bases and beaches. **Region:** Ewa Plain **Neighborhood:** Ewa Gen Parkside **Condition:** Excellent **Parking:** 3 Car+, Driveway, Garage, Street **Total Parking:** 4 **View:** Garden **Frontage:** **Pool:** None **Zoning:** 11 - A-1 Low Density Apartment **Sale Conditions:** None **Schools:** [Keoneula](#), [Ewa Makai](#), [Campbell](#) \* [Request Showing](#), [Photos](#), [History](#), [Maps](#), [Deed](#), [Watch List](#), [Tax Info](#)

DOM = Days on Market