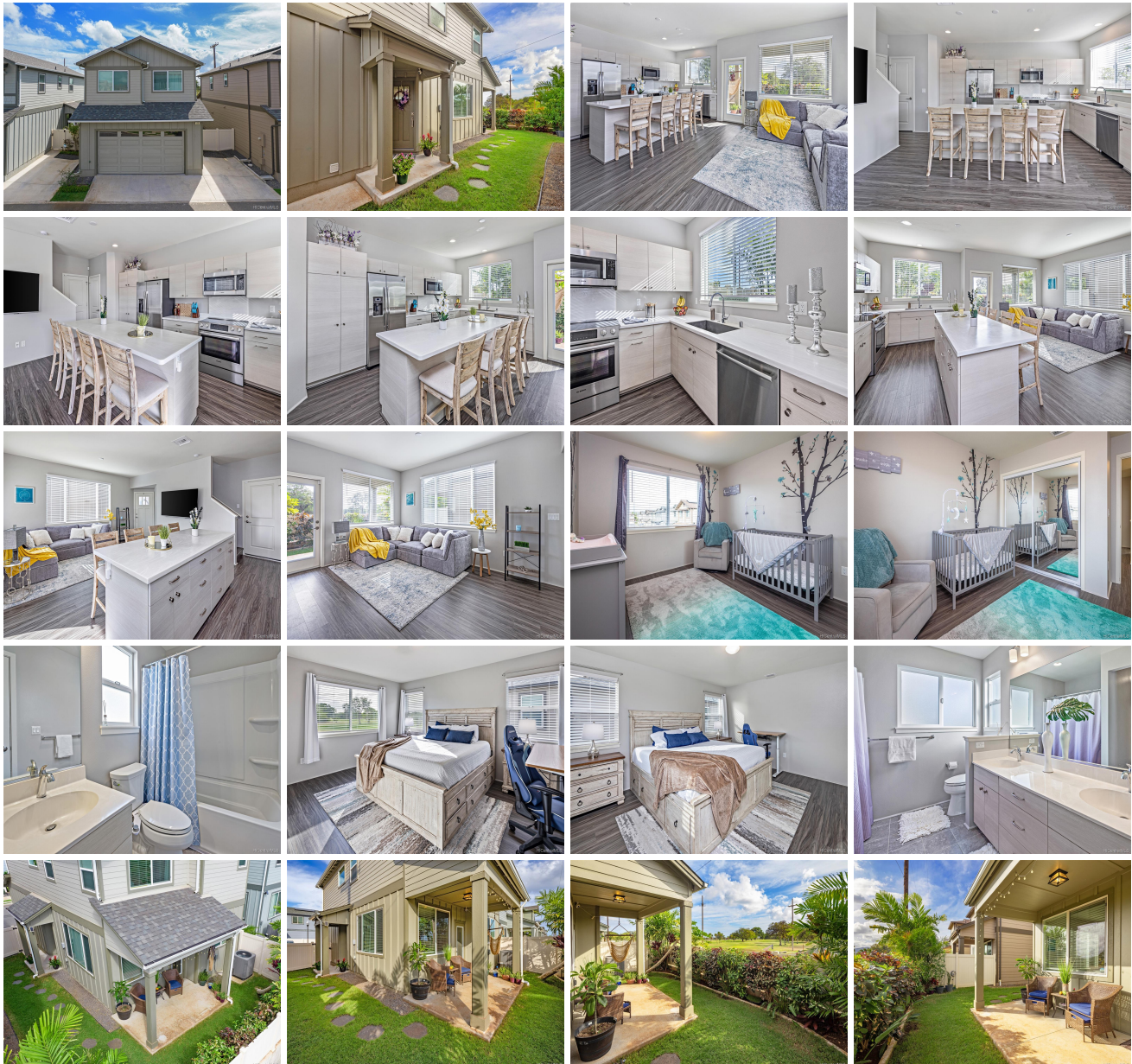


**91-1159 Kamakana Street Unit 538, Ewa Beach 96706 \* \$810,000**

Sold Price: \$825,000	Sold Date: 09-02-2021	Sold Ratio: 102%
Beds: <b>3</b>	MLS#: <b>202119539, FS</b>	Year Built: <b>2018</b>
Bath: <b>2/1</b>	Status: <b>Sold</b>	Remodeled:
Living Sq. Ft.: <b>1,228</b>	List Date & DOM: <b>07-29-2021 &amp; 6</b>	Total Parking: <b>3</b>
Land Sq. Ft.: <b>2,142</b>	Condition: <b>Excellent</b>	<a href="#">Assessed Value</a>
Lanai Sq. Ft.: <b>36</b>	Frontage: <b>Golf Course</b>	Building: <b>\$299,200</b>
Sq. Ft. Other: <b>84</b>	Tax/Year: <b>\$184/2021</b>	Land: <b>\$332,200</b>
Total Sq. Ft. <b>1,348</b>	Neighborhood: <b>Ewa Gen-seabridge</b>	Total: <b>\$631,400</b>
Maint./Assoc. <b>\$360 / \$39</b>	<a href="#">Flood Zone</a> : <b>Zone D - Tool</b>	Stories / CPR: <b>Two / Yes</b>
Parking: <b>3 Car+, Garage</b>	Frontage: <b>Golf Course</b>	
<a href="#">Zoning</a> : <b>11 - A-1 Low Density Apartment</b>	View: <b>Golf Course, Mountain, Sunset</b>	

**Public Remarks:** Welcome home to Seabridge by Gentry, newly built homes with luxury, energy efficiency and location in mind. Don't miss this rarely available golf course frontage lot situated with unobstructed views of both a tee box and putting green! Perimeter lots at Seabridge are few and far between boasting additional open spaces allowing for breezy and private living. Oversized windows provide abundant light and clear golf course views with frequent picturesque sunsets. The countless interior upgrades include Corian kitchen countertops, high-end GE and Bosch appliances, luxury vinyl plank flooring throughout the entire home, an oversized spa tub and more. Enjoy quintessential Hawaiiana living on your covered backyard lanai surrounded by lush tropical landscaping, lava stone walkway and a fruit-bearing papaya tree. The additional parking offers multi family living options and one more reason to seize the opportunity for this exclusive property before it's gone.

**Sale Conditions:** None **Schools:** , , \* [Request Showing](#), [Photos](#), [History](#), [Maps](#), [Deed](#), [Watch List](#), [Tax Info](#)





Address	Price	Bd & Bth	Living / Avg.	Land   Avg.	DOM
<a href="#">91-1159 Kamakana Street 538</a>	<a href="#">\$810,000</a>	3 & 2/1	1,228   \$660	2,142   \$378	6

Address	Tax   Maint.   Ass.	Assessed Land	Assessed Building	Assessed Total	Ratio	Year & Remodeled
<a href="#">91-1159 Kamakana Street 538</a>	\$184   \$360   \$39	\$332,200	\$299,200	\$631,400	128%	2018 & NA

Address	Sold Price	Sold Date	Sold Ratio	Original Ratio	Sold Terms
<a href="#">91-1159 Kamakana Street 538</a>	\$825,000	09-02-2021	102%	102%	VA

[91-1159 Kamakana Street 538](#) - MLS#: [202119539](#) - Welcome home to Seabridge by Gentry, newly built homes with luxury, energy efficiency and location in mind. Don't miss this rarely available golf course frontage lot situated with unobstructed views of both a tee box and putting green! Perimeter lots at Seabridge are few and far between boasting additional open spaces allowing for breezy and private living. Oversized windows provide abundant light and clear golf course views with frequent picturesque sunsets. The countless interior upgrades include Corian kitchen countertops, high-end GE and Bosch appliances, luxury vinyl plank flooring throughout the entire home, an oversized spa tub and more. Enjoy quintessential Hawaiiana living on your covered backyard lanai surrounded by lush tropical landscaping, lava stone walkway and a fruit-bearing papaya tree. The additional parking offers multi family living options and one more reason to seize the opportunity for this exclusive property before it's gone. **Region:** Ewa Plain **Neighborhood:** Ewa Gen-seabridge **Condition:** Excellent **Parking:** 3 Car+, Garage **Total Parking:** 3 **View:** Golf Course, Mountain, Sunset **Frontage:** Golf Course **Pool:** None **Zoning:** 11 - A-1 Low Density Apartment **Sale Conditions:** None **Schools:** , , \* [Request Showing](#), [Photos](#), [History](#), [Maps](#), [Deed](#), [Watch List](#), [Tax Info](#)

DOM = Days on Market