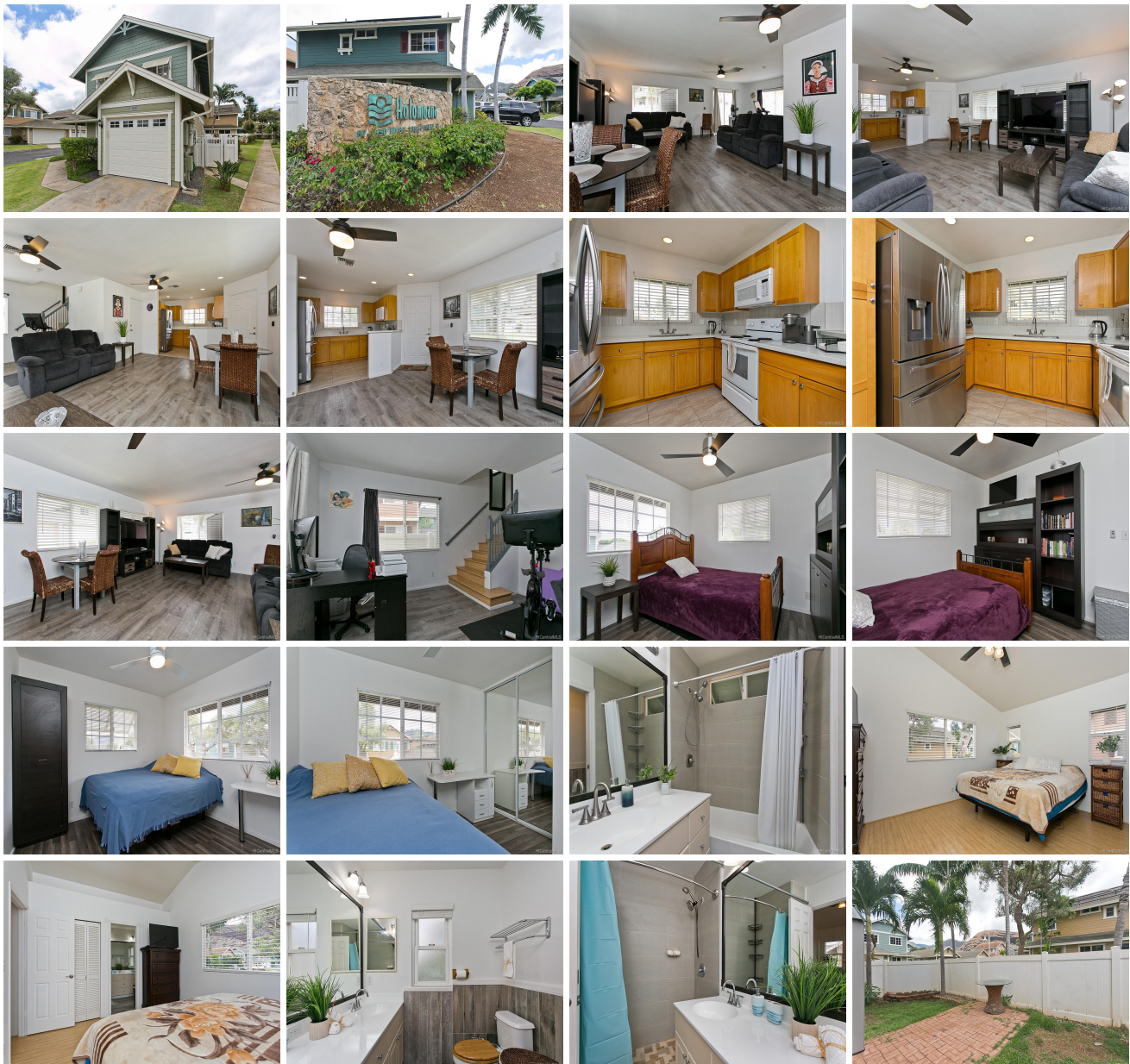


87-1980 Pakeke Street Unit H, Waianae 96792 * \$550,000

Sold Price: \$613,000	Sold Date: 12-07-2021	Sold Ratio: 111%
Beds: 3	MLS#: <u>202124268, FS</u>	Year Built: 2006
Bath: 2/0	Status: Sold	Remodeled:
Living Sq. Ft.: 1,234	List Date & DOM: 10-01-2021 & 5	Total Parking: 2
Land Sq. Ft.: 3,527	Condition: Excellent	Assessed Value
Lanai Sq. Ft.: 0	Frontage:	Building: \$170,900
Sq. Ft. Other: 29	Tax/Year: \$131/2021	Land: \$277,900
Total Sq. Ft. 1,263	Neighborhood: Mali	Total: \$448,800
Maint./Assoc. \$558 / \$0	Flood Zone : Zone X - Tool	Stories / CPR: Two / Yes
Parking: 2 Car, Garage, Street	Frontage:	
Zoning : 05 - R-5 Residential District	View: Garden, Mountain	

Public Remarks: Welcome to Sea Country on the West side of Oahu. This 3 bedroom, 2 bath home sits on the corner in the Holomoana neighborhood. Single-family detached home with 25 OWNED Photovoltaic panels with backup battery. The first floor has an open living/dining area with an adjacent kitchen and the home has solid surface laminate flooring throughout. The second floor has three bedrooms and two full baths. The primary bathroom has dual sinks and a shower stall. The hall bathroom has a tub/shower combination. This home has great outdoor living space in the backyard and comes with a storage shed. Plenty of street parking is available for additional vehicles. The community includes a General Store, pool, park and walking paths. Hiking & the beach are nearby. Come home to the Waianae Coast of Oahu. **Sale Conditions:** None **Schools:** , * [Request Showing](#), [Photos](#), [History](#), [Maps](#), [Deed](#), [Watch List](#), [Tax Info](#)





Address	Price	Bd & Bth	Living / Avg.	Land Avg.	DOM
87-1980 Pakeke Street H	\$550,000	3 & 2/0	1,234 \$446	3,527 \$156	5

Address	Tax Maint. Ass.	Assessed Land	Assessed Building	Assessed Total	Ratio	Year & Remodeled
87-1980 Pakeke Street H	\$131 \$558 \$0	\$277,900	\$170,900	\$448,800	123%	2006 & NA

Address	Sold Price	Sold Date	Sold Ratio	Original Ratio	Sold Terms
87-1980 Pakeke Street H	\$613,000	12-07-2021	111%	111%	Conventional

[87-1980 Pakeke Street H](#) - MLS#: [202124268](#) - Welcome to Sea Country on the West side of Oahu. This 3 bedroom, 2 bath home sits on the corner in the Holomoana neighborhood. Single-family detached home with 25 OWNED Photovoltaic panels with backup battery. The first floor has an open living/dining area with an adjacent kitchen and the home has solid surface laminate flooring throughout. The second floor has three bedrooms and two full baths. The primary bathroom has dual sinks and a shower stall. The hall bathroom has a tub/shower combination. This home has great outdoor living space in the backyard and comes with a storage shed. Plenty of street parking is available for additional vehicles. The community includes a General Store, pool, park and walking paths. Hiking & the beach are nearby. Come home to the Waianae Coast of Oahu. **Region:** Leeward **Neighborhood:** Maili **Condition:** Excellent **Parking:** 2 Car, Garage, Street **Total Parking:** 2 **View:** Garden, Mountain **Frontage:** **Pool:** None **Zoning:** 05 - R-5 Residential District **Sale Conditions:** None **Schools:** , , * [Request Showing](#), [Photos](#), [History](#), [Maps](#), [Deed](#), [Watch List](#), [Tax Info](#)

DOM = Days on Market