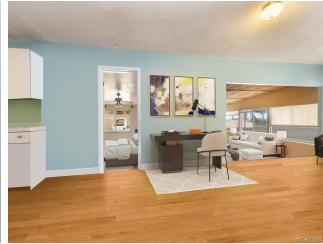
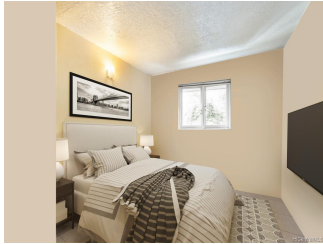
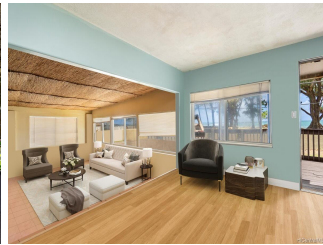


54-100 Kamehameha Highway, Hauula 96717 * \$599,000

Sold Price: \$810,000	Sold Date: 12-20-2021	Sold Ratio: 135%
Beds: 6	MLS#: <u>202125857</u>, FS	Year Built: 1975
Bath: 3/0	Status: Sold	Remodeled:
Living Sq. Ft.: 2,477	List Date & DOM: 10-13-2021 & 16	Total Parking: 3
Land Sq. Ft.: 8,808	Condition: Average, Fair	Assessed Value
Lanai Sq. Ft.: 288	Frontage: Other	Building: \$373,800
Sq. Ft. Other: 0	Tax/Year: \$242/2021	Land: \$457,400
Total Sq. Ft. 2,765	Neighborhood: Hauula	Total: \$831,200
Maint./Assoc. \$0 / \$0	Flood Zone : Zone AE - <u>Tool</u>	Stories / CPR: One / No
Parking: Driveway	Frontage: Other	
Zoning : 05 - R-5 Residential District	View: Mountain, Ocean	

Public Remarks: SHOWING BY APPOINTMENT ONLY. DO NOT DRIVE BY OR STOP AT THE HOUSE TO DISTURB TENANTS. Surround yourself with the beauty of nature. Multigenerational home with separate entrances on Kamehameha Hwy right across from the ocean with a sandy beach. This home is ready for you to renovate and add your personal touch or build new with no neighbors behind and empty lot on one side so you can enjoy your privacy. Large level lot. Currently tenant occupied on month to month lease and tenants are willing to stay longer. Ample driveway and street parking. This is a unique property with great possibilities. **Sale Conditions:** None **Schools:** , , * [Request Showing](#), [Photos](#), [History](#), [Maps](#), [Deed](#), [Watch List](#), [Tax Info](#)





Address	Price	Bd & Bth	Living / Avg.	Land Avg.	DOM
54-100 Kamehameha Highway	\$599,000	6 & 3/0	2,477 \$242	8,808 \$68	16

Address	Tax Maint. Ass.	Assessed Land	Assessed Building	Assessed Total	Ratio	Year & Remodeled
54-100 Kamehameha Highway	\$242 \$0 \$0	\$457,400	\$373,800	\$831,200	72%	1975 & NA

Address	Sold Price	Sold Date	Sold Ratio	Original Ratio	Sold Terms
54-100 Kamehameha Highway	\$810,000	12-20-2021	135%	135%	Cash

[54-100 Kamehameha Highway](#) - MLS#: [202125857](#) - SHOWING BY APPOINTMENT ONLY. DO NOT DRIVE BY OR STOP AT THE HOUSE TO DISTURB TENANTS. Surround yourself with the beauty of nature. Multigenerational home with separate entrances on Kamehameha Hwy right across from the ocean with a sandy beach. This home is ready for you to renovate and add your personal touch or build new with no neighbors behind and empty lot on one side so you can enjoy your privacy. Large level lot. Currently tenant occupied on month to month lease and tenants are willing to stay longer. Ample driveway and street parking. This is a unique property with great possibilities. **Region:** Kaneohe **Neighborhood:** Hauula **Condition:** Average, Fair **Parking:** Driveway **Total Parking:** 3 **View:** Mountain, Ocean **Frontage:** Other **Pool:** None **Zoning:** 05 - R-5 Residential District **Sale Conditions:** None **Schools:** , , * [Request Showing](#), [Photos](#), [History](#), [Maps](#), [Deed](#), [Watch List](#), [Tax Info](#)

DOM = Days on Market