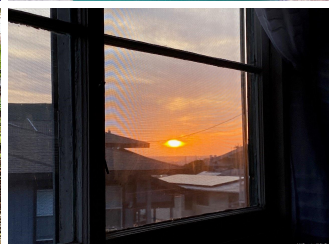
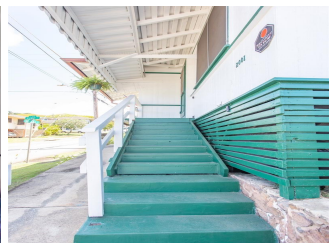
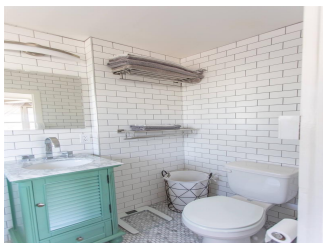


2001 Iholena Street, Honolulu 96817 * \$628,000

Sold Price: \$641,000	Sold Date: 06-20-2022	Sold Ratio: 102%
Beds: 1	MLS#: <u>202209182</u>, FS	Year Built: 1940
Bath: 1/0	Status: Sold	Remodeled: 2021
Living Sq. Ft.: 456	List Date & DOM: 05-12-2022 & 7	Total Parking: 0
Land Sq. Ft.: 1,350	Condition: Excellent	Assessed Value
Lanai Sq. Ft.: 0	Frontage:	Building: \$41,100
Sq. Ft. Other: 0	Tax/Year: \$125/2021	Land: \$433,600
Total Sq. Ft. 456	Neighborhood: Alewa Heights	Total: \$474,700
Maint./Assoc. \$0 / \$0	Flood Zone : Zone X - Tool	Stories / CPR: One / No
Parking: 1 Car, Street	Frontage:	
Zoning : 05 - R-5 Residential District	View: Garden	

Public Remarks: *** One of the most affordable homes in Honolulu *** Check out the pride of ownership of this historic plantation home in Alewa Heights with peekaboo ocean views. You will appreciate how the tasteful updates combine the style of an era gone by & modern-day living. Enjoy the savings of a brand new photovoltaic solar system with 12 panels installed on a new roof (avg \$29/mo) & new Daikon split a/c system. Appreciate the functional kitchen renovation boosting a microwave elevator, new Bosch refrigerator, dishwasher, oven with gas range & custom beveled glass vintage cabinets. Other recent updates include full bathroom renovation with blue tooth speaker, new copper gutters, hot water heater, washer/dryer, flooring, ceiling fans & fresh paint. Perfect for someone who wants a low maintenance yard, big enough for fur babies, morning coffee & to grow a small garden in. Furniture will stay with the home, making it move in ready. Conveniently located steps to Alewa Park, Liliha & to nearby bus stop taking you to the downtown business district, Waikiki, shopping, restaurants & world class beaches. Call your favorite Realtor before you miss out on this Honolulu gem. **Sale Conditions:** None **Schools:** , , * [Request Showing](#), [Photos](#), [History](#), [Maps](#), [Deed](#), [Watch List](#), [Tax Info](#)





Address	Price	Bd & Bth	Living / Avg.	Land Avg.	DOM
2001 Iholena Street	\$628,000	1 & 1/0	456 \$1,377	1,350 \$465	7

Address	Tax Maint. Ass.	Assessed Land	Assessed Building	Assessed Total	Ratio	Year & Remodeled
2001 Iholena Street	\$125 \$0 \$0	\$433,600	\$41,100	\$474,700	132%	1940 & 2021

Address	Sold Price	Sold Date	Sold Ratio	Original Ratio	Sold Terms
2001 Iholena Street	\$641,000	06-20-2022	102%	102%	Conventional 3000

[2001 Iholena Street](#) - MLS#: [202209182](#) - *** One of the most affordable homes in Honolulu *** Check out the pride of ownership of this historic plantation home in Alewa Heights with peekaboo ocean views. You will appreciate how the tasteful updates combine the style of an era gone by & modern-day living. Enjoy the savings of a brand new photovoltaic solar system with 12 panels installed on a new roof (avg \$29/mo) & new Daikon split a/c system. Appreciate the functional kitchen renovation boosting a microwave elevator, new Bosch refrigerator, dishwasher, oven with gas range & custom beveled glass vintage cabinets. Other recent updates include full bathroom renovation with blue tooth speaker, new copper gutters, hot water heater, washer/dryer, flooring, ceiling fans & fresh paint. Perfect for someone who wants a low maintenance yard, big enough for fur babies, morning coffee & to grow a small garden in. Furniture will stay with the home, making it move in ready. Conveniently located steps to Alewa Park, Liliha & to nearby bus stop taking you to the downtown business district, Waikiki, shopping, restaurants & world class beaches. Call your favorite Realtor before you miss out on this Honolulu gem.

Region: Metro **Neighborhood:** Alewa Heights **Condition:** Excellent **Parking:** 1 Car, Street **Total Parking:** 0 **View:** Garden **Frontage:** Pool: None **Zoning:** 05 - R-5 Residential District **Sale Conditions:** None **Schools:** , , * [Request Showing](#), [Photos](#), [History](#), [Maps](#), [Deed](#), [Watch List](#), [Tax Info](#)

DOM = Days on Market