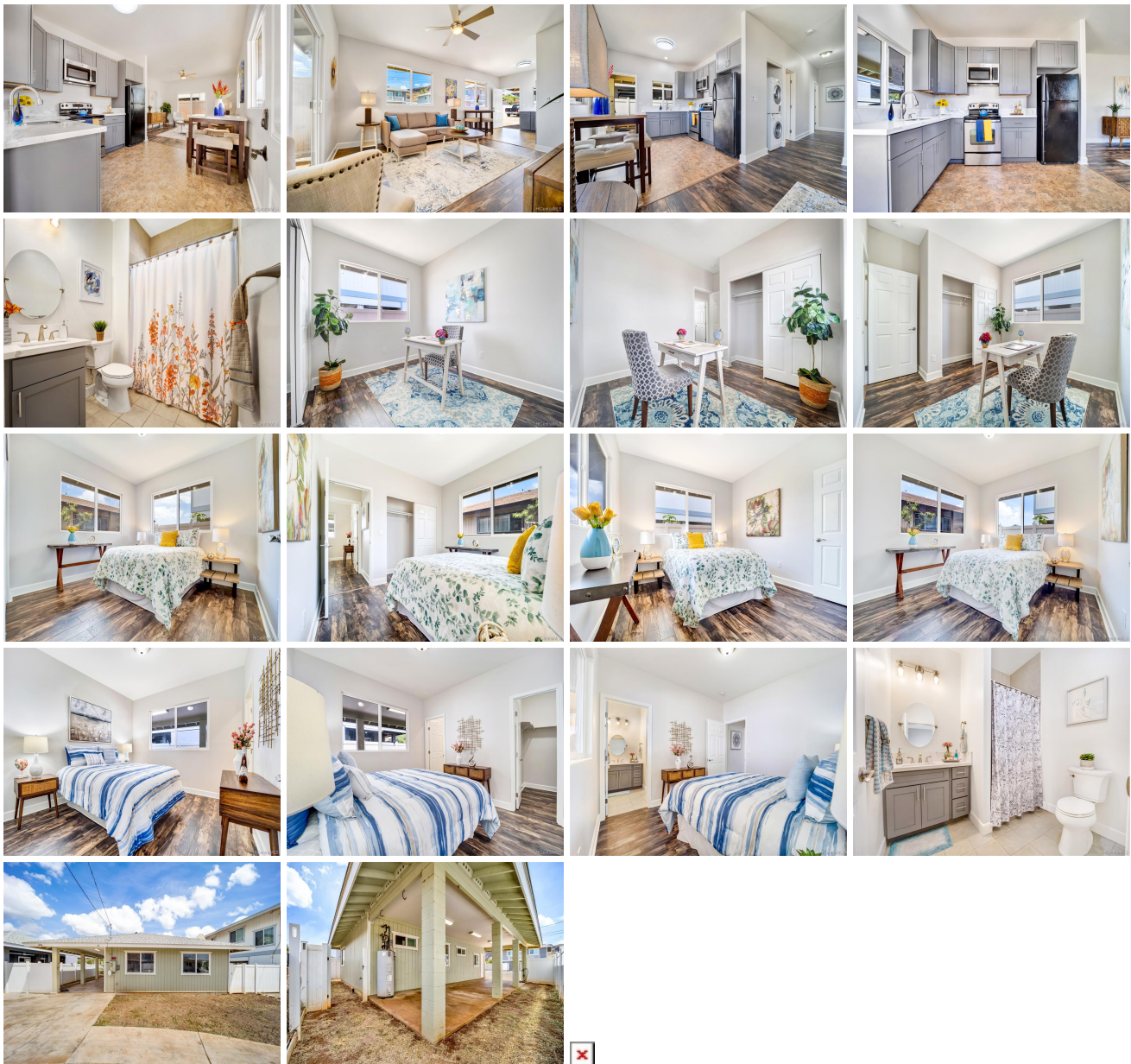


87-1720 Farrington Highway Unit 21, Waianae 96792 * \$649,000 * Originally \$699,000

Sold Price: \$652,000	Sold Date: 09-22-2022	Sold Ratio: 100%
Beds: 3	MLS#: 202209432, FS	Year Built: 2015
Bath: 2/0	Status: Sold	Remodeled: 2022
Living Sq. Ft.: 987	List Date & DOM: 05-16-2022 & 100	Total Parking: 2
Land Sq. Ft.: 3,239	Condition: Above Average, Excellent	Assessed Value
Lanai Sq. Ft.: 0	Frontage:	Building: \$229,500
Sq. Ft. Other: 419	Tax/Year: \$153/2021	Land: \$343,100
Total Sq. Ft. 1,406	Neighborhood: Mali	Total: \$572,600
Maint./Assoc. \$0 / \$65	Flood Zone : Zone VE - Tool	Stories / CPR: One / Yes
Parking: 2 Car, Driveway, Street	Frontage:	
Zoning : 05 - R-5 Residential District	View: Mountain	

Public Remarks: Price Reduced! The single-level floor plan features a modern interior and flow-through living/dining area. Efficiently designed kitchen that has been recently remodeled with quartz countertops, contemporary cabinetry, and an over-the-range microwave. Good-sized bathrooms with matching quartz countertops and modern cabinetry. Entertain guests in the covered patio or move your party to the nearby beach. Live the beach lifestyle you've been waiting for! Green Homes at Lualualei also features shared water supply for a lower bill. See for yourself what this home has to offer. Schedule your showing before it's gone. **Sale Conditions:** None **Schools:** , , * [Request Showing](#), [Photos](#), [History](#), [Maps](#), [Deed](#), [Watch List](#), [Tax Info](#)



Address	Price	Bd & Bth	Living / Avg.	Land Avg.	DOM
87-1720 Farrington Highway 21	\$649,000	3 & 2/0	987 \$658	3,239 \$200	100

Address	Tax Maint. Ass.	Assessed Land	Assessed Building	Assessed Total	Ratio	Year & Remodeled
87-1720 Farrington Highway 21	\$153 \$0 \$65	\$343,100	\$229,500	\$572,600	113%	2015 & 2022

Address	Sold Price	Sold Date	Sold Ratio	Original Ratio	Sold Terms
87-1720 Farrington Highway 21	\$652,000	09-22-2022	100%	93%	Conventional 1000

[87-1720 Farrington Highway 21](#) - MLS#: [202209432](#) - Original price was \$699,000 - Price Reduced! The single-level floor plan features a modern interior and flow-through living/dining area. Efficiently designed kitchen that has been recently remodeled with quartz countertops, contemporary cabinetry, and an over-the-range microwave. Good-sized bathrooms with matching quartz countertops and modern cabinetry. Entertain guests in the covered patio or move your party to the nearby beach. Live the beach lifestyle you've been waiting for! Green Homes at Lualualei also features shared water supply for a lower bill. See for yourself what this home has to offer. Schedule your showing before it's gone. **Region:** Leeward **Neighborhood:** Mails **Condition:** Above Average, Excellent **Parking:** 2 Car, Driveway, Street **Total Parking:** 2 **View:** Mountain **Frontage:** **Pool:** None **Zoning:** 05 - R-5 Residential District **Sale Conditions:** None **Schools:** , , * [Request Showing](#), [Photos](#), [History](#), [Maps](#), [Deed](#), [Watch List](#), [Tax Info](#)

DOM = Days on Market