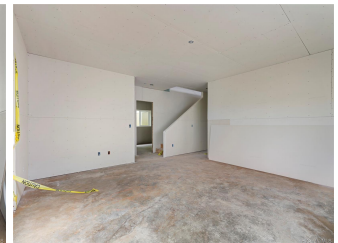
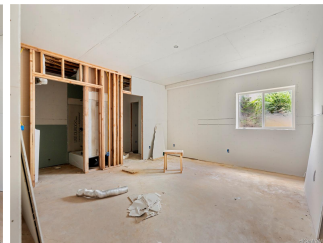
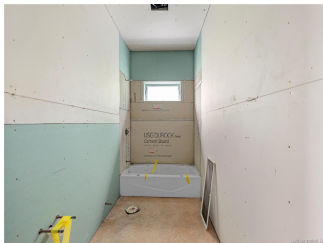
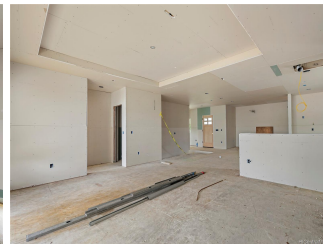
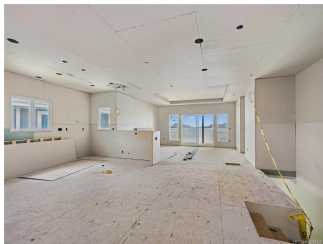
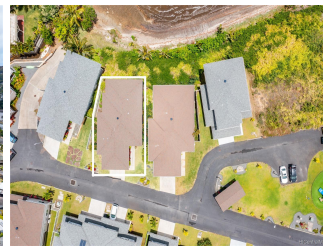


45-075 Waikalua Road Unit S, Kaneohe 96744 * \$1,649,000

Sold Price: \$1,400,000	Sold Date: 08-08-2022	Sold Ratio: 85%
Beds: 4	MLS#: 202210796, FS	Year Built: 2018
Bath: 3/1	Status: Sold	Remodeled:
Living Sq. Ft.: 3,278	List Date & DOM: 06-06-2022 & 22	Total Parking: 2
Land Sq. Ft.: 6,192	Condition: Fair	Assessed Value
Lanai Sq. Ft.: 481	Frontage: Ocean, Waterfront	Building: \$508,100
Sq. Ft. Other: 0	Tax/Year: \$564/2022	Land: \$941,900
Total Sq. Ft. 3,759	Neighborhood: Waikalua	Total: \$1,450,000
Maint./Assoc. \$239 / \$0	Flood Zone : Zone X - Tool	Stories / CPR: Two / Yes
Parking: 2 Car, Driveway, Garage	Frontage: Ocean, Waterfront	
Zoning : 05 - R-5 Residential District	View: Coastline, Ocean	

Public Remarks: OCEANFRONT HOME! Spectacular ocean, Kaneohe Bay, and Koolau mountain views await you from this waterfront residence in the highly desirable Waikalua Bayside community! The perfect opportunity to turn this 4 bedroom/3.5 bath partially finished property into your dream home! High ceilings, large open floor plan, 2 primary suites, 2 large lanai areas, a double car garage and large picture windows. Easy access to downtown Honolulu, Oahu's military bases, some of the world's best beaches, schools, parks, golf courses and shopping centers. Maintenance fee includes sewer, water, common area electricity, common area plumbing, front yard landscaping maintenance and road maintenance. **Sale Conditions:** Lender Sale **Schools:** [Mokapu](#), [King](#), [Castle](#) * [Request Showing](#), [Photos](#), [History](#), [Maps](#), [Deed](#), [Watch List](#), [Tax Info](#)



Address	Price	Bd & Bth	Living / Avg.	Land Avg.	DOM
45-075 Waikalua Road S	\$1,649,000	4 & 3/1	3,278 \$503	6,192 \$266	22

Address	Tax Maint. Ass.	Assessed Land	Assessed Building	Assessed Total	Ratio	Year & Remodeled
45-075 Waikalua Road S	\$564 \$239 \$0	\$941,900	\$508,100	\$1,450,000	114%	2018 & NA

Address	Sold Price	Sold Date	Sold Ratio	Original Ratio	Sold Terms
45-075 Waikalua Road S	\$1,400,000	08-08-2022	85%	85%	Cash

[45-075 Waikalua Road S](#) - MLS#: [202210796](#) - OCEANFRONT HOME! Spectacular ocean, Kaneohe Bay, and Koolau mountain views await you from this waterfront residence in the highly desirable Waikalua Bayside community! The perfect opportunity to turn this 4 bedroom/3.5 bath partially finished property into your dream home! High ceilings, large open floor plan, 2 primary suites, 2 large lanai areas, a double car garage and large picture windows. Easy access to downtown Honolulu, Oahu's military bases, some of the world's best beaches, schools, parks, golf courses and shopping centers. Maintenance fee includes sewer, water, common area electricity, common area plumbing, front yard landscaping maintenance and road maintenance. **Region:** Kaneohe **Neighborhood:** Waikalua **Condition:** Fair **Parking:** 2 Car, Driveway, Garage **Total Parking:** 2 **View:** Coastline, Ocean **Frontage:** Ocean, Waterfront **Pool:** None **Zoning:** 05 - R-5 Residential District **Sale Conditions:** Lender Sale **Schools:** [Mokapu](#), [King](#), [Castle](#) * [Request Showing](#), [Photos](#), [History](#), [Maps](#), [Deed](#), [Watch List](#), [Tax Info](#)

DOM = Days on Market