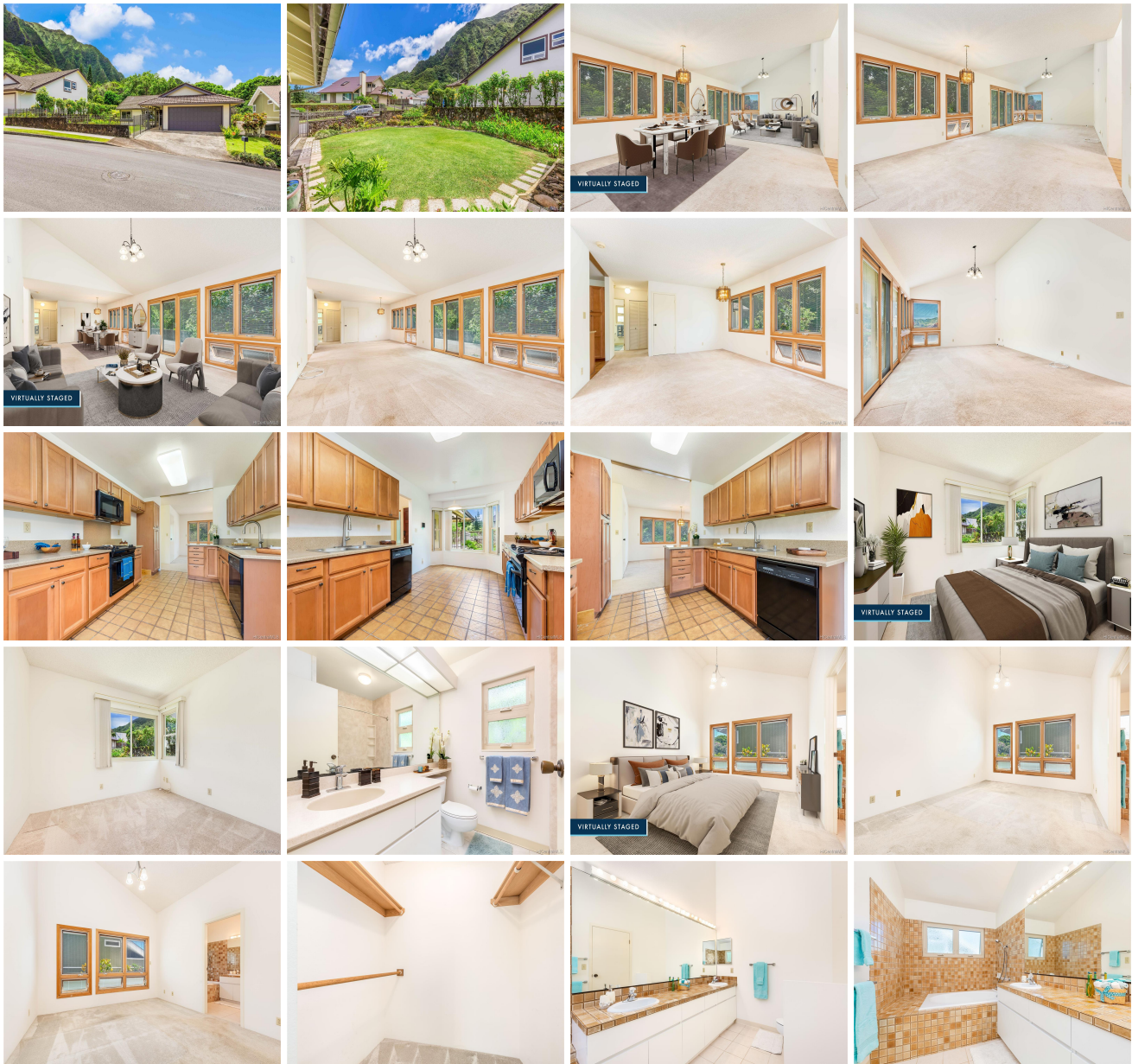


47-661 Nukupuu Street, Kaneohe 96744 * \$1,240,000

Sold Price: \$1,250,000	Sold Date: 09-02-2022	Sold Ratio: 101%
Beds: 3	MLS#: <u>202214179</u>, FS	Year Built: 1985
Bath: 2/0	Status: Sold	Remodeled: 2009
Living Sq. Ft.: 1,509	List Date & DOM: 07-29-2022 & 8	Total Parking: 4
Land Sq. Ft.: 7,510	Condition: Above Average, Excellent	Assessed Value
Lanai Sq. Ft.: 125	Frontage: Preservation	Building: \$371,200
Sq. Ft. Other: 0	Tax/Year: \$220/2021	Land: \$660,200
Total Sq. Ft. 1,634	Neighborhood: Ahuimanu Hills	Total: \$1,031,400
Maint./Assoc. \$0 / \$0	Flood Zone : Zone D - Tool	Stories / CPR: One / No
Parking: 3 Car+, Driveway, Garage, Street	Frontage: Preservation	
Zoning : 04 - R-7.5 Residential District	View: Garden, Mountain	

Public Remarks: This beautiful, tranquil location is a perfect setting for sharing time with family and friends. Nestled in the low mountain area above Temple Valley, Ahuimanu Hills is a great place to come home to. The single story three bedroom, two bath home has been painstakingly cared for over the years. The front yard is beautifully landscaped and the back of the property looks over preservation land. A large open lanai sits at the back of the house ready for entertaining or just enjoying the breezes that blow through the trees! A Butter Avacado tree provides a bounty of fruit. The home has been renovated over the years with new kitchen cabinets and quartz countertops, both bathrooms were redone - including a large shower - and new windows throughout the entire home. A must see property! Ready to move in! **Sale Conditions:** None **Schools:** [Ahuimanu](#), [King](#), [Castle](#) * [Request Showing](#), [Photos](#), [History](#), [Maps](#), [Deed](#), [Watch List](#), [Tax Info](#)





Address	Price	Bd & Bth	Living / Avg.	Land Avg.	DOM
47-661 Nukupuu Street	\$1,240,000	3 & 2/0	1,509 \$822	7,510 \$165	8

Address	Tax Maint. Ass.	Assessed Land	Assessed Building	Assessed Total	Ratio	Year & Remodeled
47-661 Nukupuu Street	\$220 \$0 \$0	\$660,200	\$371,200	\$1,031,400	120%	1985 & 2009

Address	Sold Price	Sold Date	Sold Ratio	Original Ratio	Sold Terms
47-661 Nukupuu Street	\$1,250,000	09-02-2022	101%	101%	Conventional 5000

[47-661 Nukupuu Street](#) - MLS#: [202214179](#) - This beautiful, tranquil location is a perfect setting for sharing time with family and friends. Nestled in the low mountain area above Temple Valley, Ahuimanu Hills is a great place to come home to. The single story three bedroom, two bath home has been painstakingly cared for over the years. The front yard is beautifully landscaped and the back of the property looks over preservation land. A large open lanai sits at the back of the house ready for entertaining or just enjoying the breezes that blow through the trees! A Butter Avacado tree provides a bounty of fruit. The home has been renovated over the years with new kitchen cabinets and quartz countertops, both bathrooms were redone - including a large shower - and new windows throughout the entire home. A must see property! Ready to move in!

Region: Kaneohe **Neighborhood:** Ahuimanu Hills **Condition:** Above Average, Excellent **Parking:** 3 Car+, Driveway, Garage, Street **Total Parking:** 4 **View:** Garden, Mountain **Frontage:** Preservation **Pool:** None **Zoning:** 04 - R-7.5 Residential District **Sale Conditions:** None **Schools:** [Ahuimanu](#), [King](#), [Castle](#) * [Request Showing](#), [Photos](#), [History](#), [Maps](#), [Deed](#), [Watch List](#), [Tax Info](#)

DOM = Days on Market