

**91-1112 Kai Oio Street, Ewa Beach 96706 \* \$1,579,000 \* Originally \$1,660,000**

Sold Price: \$1,450,000

Sold Date: 12-08-2022

Sold Ratio: 92%

Beds: **4**

MLS#: **202214797**, FS

Year Built: **2016**

Bath: **3/0**

Status: **Sold**

Remodeled: **2022**

Living Sq. Ft.: **2,039**

List Date & DOM: **08-06-2022 & 95**

Total Parking: **3**

Land Sq. Ft.: **4,439**

Condition: **Excellent**

[Assessed Value](#)

Lanai Sq. Ft.: **152**

Frontage: **Golf Course**

Building: **\$566,700**

Sq. Ft. Other: **0**

Tax/Year: **\$346/2022**

Land: **\$722,900**

Total Sq. Ft. **2,191**

Neighborhood: **Hoakalei-kuapapa**

Total: **\$1,289,600**

Maint./Assoc. **\$0 / \$276**

[Flood Zone](#): **Zone D - Tool**

Stories / CPR: **Two / No**

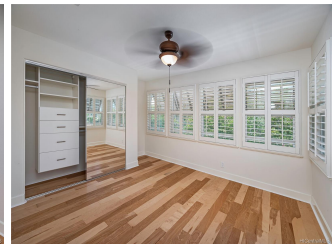
Parking: **3 Car+, Garage**

Frontage: **Golf Course**

[Zoning](#): **05 - R-5 Residential District**

View: **Golf Course, Mountain, Sunset**

**Public Remarks:** \*LOWEST PRICED NON-CPR GOLF COURSE FRONTAGE/VIEW HOME IN HOAKALEI\* MOTIVATED SELLER! Beautiful move-in ready, single family, 4 BD/3BA Golf Course home located in the desirable resort community of Hoakalei-Kuapapa. Located on a quiet street with incredible views of the 14th fairway of the prestigious Hoakalei CC. Includes a large master suite, and a 1st floor bedroom and full bath. 24 Owned PV panels and 2 Tesla batteries for low electricity costs. Granite countertops, stainless steel appliances and an oversized island make up the great Kitchen. With an upstairs loft, plantation shutters and blinds, LED recessed lighting, walk-in closets in the bedrooms with closet systems, and an attached 2-car garage with added driveway parking. Freshly painted, with new engineered hardwood flooring throughout, tile in all bathrooms and laundry room, central AC, solar water heater, and grassy front and back yards with a sprinkler system. Low monthly HOA fee includes Spectrum Cable TV/Internet/Phone. The nearby community rec center includes a swimming pool, BBQs, jacuzzi. Also, access to the Wai Kai Hale Club to enjoy the private beach and paddle boarding on the lagoon. Close to Schools & Shopping! **Sale Conditions:** None **Schools:** [Ewa Beach](#), [Ewa Makai](#), [Campbell](#) \* [Request Showing](#), [Photos](#), [History](#), [Maps](#), [Deed](#), [Watch List](#), [Tax Info](#)





Address	Price	Bd & Bth	Living / Avg.	Land   Avg.	DOM
<a href="#">91-1112 Kai Oio Street</a>	<b>\$1,579,000</b>	4 & 3/0	2,039   \$774	4,439   \$356	95

Address	Tax   Maint.   Ass.	Assessed Land	Assessed Building	Assessed Total	Ratio	Year & Remodeled
<a href="#">91-1112 Kai Oio Street</a>	\$346   \$0   \$276	\$722,900	\$566,700	\$1,289,600	122%	2016 & 2022

Address	Sold Price	Sold Date	Sold Ratio	Original Ratio	Sold Terms
<a href="#">91-1112 Kai Oio Street</a>	\$1,450,000	12-08-2022	92%	87%	Conventional

[91-1112 Kai Oio Street](#) - MLS#: [202214797](#) - Original price was \$1,660,000 - \*LOWEST PRICED NON-CPR GOLF COURSE FRONTAGE/VIEW HOME IN HOAKALEI\* MOTIVATED SELLER! Beautiful move-in ready, single family, 4 BD/3BA Golf Course home located in the desirable resort community of Hoakalei-Kuapapa. Located on a quiet street with incredible views of the 14th fairway of the prestigious Hoakalei CC. Includes a large master suite, and a 1st floor bedroom and full bath. 24 Owned PV panels and 2 Tesla batteries for low electricity costs. Granite countertops, stainless steel appliances and an oversized island make up the great Kitchen. With an upstairs loft, plantation shutters and blinds, LED recessed lighting, walk-in closets in the bedrooms with closet systems, and an attached 2-car garage with added driveway parking. Freshly painted, with new engineered hardwood flooring throughout, tile in all bathrooms and laundry room, central AC, solar water heater, and grassy front and back yards with a sprinkler system. Low monthly HOA fee includes Spectrum Cable TV/Internet/Phone. The nearby community rec center includes a swimming pool, BBQs, jacuzzi. Also, access to the Wai Kai Hale Club to enjoy the private beach and paddle boarding on the lagoon. Close to Schools & Shopping! **Region:** Ewa Plain **Neighborhood:** Hoakalei-kuapapa **Condition:** Excellent **Parking:** 3 Car+, Garage **Total Parking:** 3 **View:** Golf Course, Mountain, Sunset **Frontage:** Golf Course **Pool:** None **Zoning:** 05 - R-5 Residential District **Sale Conditions:** None **Schools:** [Ewa Beach](#), [Ewa Makai](#), [Campbell](#) \* [Request Showing](#), [Photos](#), [History](#), [Maps](#), [Deed](#), [Watch List](#), [Tax Info](#)

DOM = Days on Market