

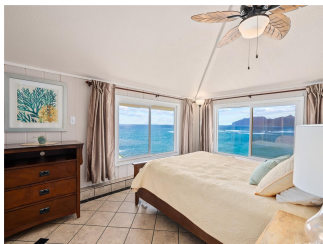
55-060 & 55-06 Naupaka Street, Laie 96762 * \$3,700,000

Beds: 10	MLS#: 202216126, FS	Year Built: 1972
Bath: 7/2	Status: Cancelled	Remodeled: 1991
Living Sq. Ft.: 4,736	List Date & DOM: 08-08-2022 & 215	Total Parking: 10
Land Sq. Ft.: 16,875	Condition: Above Average	Assessed Value
Lanai Sq. Ft.: 0	Frontage: Ocean, Waterfront	Building: \$884,000
Sq. Ft. Other: 0	Tax/Year: \$1,287/2022	Land: \$173,700
Total Sq. Ft. 4,736	Neighborhood: Laie	Total: \$2,614,700
Maint./Assoc. \$0 / \$0	Flood Zone : Zone X - Tool	Stories / CPR: Two / No
Parking: 3 Car+, Boat, Driveway, Garage, Street	Frontage: Ocean, Waterfront	

[Zoning](#): **04 - R-7.5 Residential District**

View: **Coastline, Mountain, Ocean, Sunrise**

Public Remarks: Live your Hawaii dream in this gated Oceanfront Compound, perfectly situated on the serene Naupaka Peninsula at Laie Point. This sale includes 2 OCEANFRONT HOMES on a large lot with roughly 100 linear feet of unobstructed ocean frontage with a panoramic backdrop of the majestic Koolau Mountains and clear blue ocean, embodying Old Hawaii. Each house has a legal address and separate TMK. The larger 2-story house has a NEW ROOF and consists of 6 Beds 4 Baths and 2 half baths with over 3,258 sqft, and offers two living areas and plenty of room to entertain. The second home consists of 4 Beds 3 Baths with over 1,478 sqft, featuring an open floor plan with stunning ocean and mountain views. This Oceanfront Compound with over 10 Beds 7 Baths and 2 half baths and direct ocean views of Laie Bay and the Hukilau Beach coastline, make for a phenomenal retreat. Deeded beach access just steps from the houses. Minutes to BYU, the Polynesian Cultural Center, and 5-Star Turtle Bay Resort, featuring farm-to-table restaurants, world class golf, oceanfront horseback riding and walking trails, helicopter tours, and other attractions. Come experience the North Shore's raw beauty and world class beaches! **Sale Conditions:** None **Schools:** , , * [Request Showing](#), [Photos](#), [History](#), [Maps](#), [Deed](#), [Watch List](#), [Tax Info](#)





Address	Price	Bd & Bth	Living / Avg.	Land Avg.	DOM
55-060 & 55-06 Naupaka Street	\$3,700,000	10 & 7/2	4,736 \$781	16,875 \$219	215

Address	Tax Maint. Ass.	Assessed Land	Assessed Building	Assessed Total	Ratio	Year & Remodeled
55-060 & 55-06 Naupaka Street	\$1,287 \$0 \$0	\$173,700	\$884,000	\$2,614,700	142%	1972 & 1991

[55-060 & 55-06 Naupaka Street](#) - MLS#: [202216126](#) - Live your Hawaii dream in this gated Oceanfront Compound, perfectly situated on the serene Naupaka Peninsula at Laie Point. This sale includes 2 OCEANFRONT HOMES on a large lot with roughly 100 linear feet of unobstructed ocean frontage with a panoramic backdrop of the majestic Koolau Mountains and clear blue ocean, embodying Old Hawaii. Each house has a legal address and separate TMK. The larger 2-story house has a NEW ROOF and consists of 6 Beds 4 Baths and 2 half baths with over 3,258 sqft, and offers two living areas and plenty of room to entertain. The second home consists of 4 Beds 3 Baths with over 1,478 sqft, featuring an open floor plan with stunning ocean and mountain views. This Oceanfront Compound with over 10 Beds 7 Baths and 2 half baths and direct ocean views of Laie Bay and the Hukilau Beach coastline, make for a phenomenal retreat. Deeded beach access just steps from the houses. Minutes to BYU, the Polynesian Cultural Center, and 5-Star Turtle Bay Resort, featuring farm-to-table restaurants, world class golf, oceanfront horseback riding and walking trails, helicopter tours, and other attractions. Come experience the North Shore's raw beauty and world class beaches! **Region:** North Shore **Neighborhood:** Laie **Condition:** Above Average **Parking:** 3 Car+, Boat, Driveway, Garage, Street **Total Parking:** 10 **View:** Coastline, Mountain, Ocean, Sunrise **Frontage:** Ocean, Waterfront **Pool:** None **Zoning:** 04 - R-7.5 Residential District **Sale Conditions:** None **Schools:** , , * [Request Showing](#), [Photos](#), [History](#), [Maps](#), [Deed](#), [Watch List](#), [Tax Info](#)

DOM = Days on Market