

**410 Lelekepue Place, Honolulu 96821 \* \$4,285,000 \* Originally \$4,485,000**

Sold Price: \$3,950,000

Sold Date: 03-24-2023

Sold Ratio: 92%

Beds: **5**

MLS#: **202220837**, FS

Year Built: **2009**

Bath: **4/1**

Status: **Sold**

Remodeled:

Living Sq. Ft.: **3,989**

List Date & DOM: **10-17-2022 & 110**

Total Parking: **2**

Land Sq. Ft.: **19,238**

Condition: **Excellent**

[Assessed Value](#)

Lanai Sq. Ft.: **1,060**

Frontage: **Preservation**

Building: **\$1,064,000**

Sq. Ft. Other: **1,030**

Tax/Year: **\$907/2022**

Land: **\$2,185,800**

Total Sq. Ft. **6,079**

Neighborhood: **Hawaii Loa Ridge**

Total: **\$3,249,800**

Maint./Assoc. **\$0 / \$306**

[Flood Zone](#): **Zone D - Tool**

Stories / CPR: **Three+ / No**

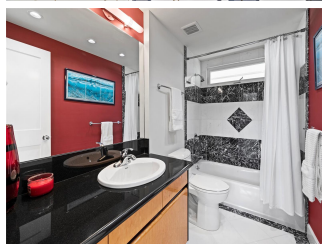
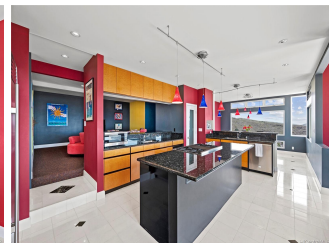
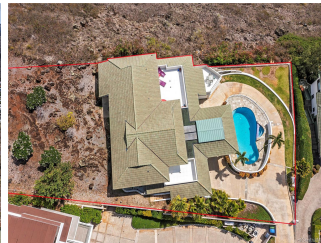
Parking: **3 Car+, Driveway, Garage, Street**

Frontage: **Preservation**

[Zoning](#): **04 - R-7.5 Residential District**

View: **Coastline, Mountain, Ocean, Sunset**

**Public Remarks:** Welcome to prestigious HAWAII LOA RIDGE, a gated premier luxury community in Honolulu. This 5 bedroom, 4.5 bath residence sits on a large, private 19,238 sq. ft. rim lot at the end of a quiet cul-de-sac with BREATHTAKING OCEAN, MOUNTAIN AND KOKO HEAD VIEWS. Fun, whimsical interior spaces are accented with a playful and vibrant color scheme - A Must See! This unique home features 2 bedrooms, 2 full baths plus an office on the main level and 3 bedrooms, 2 full baths on second level. Enjoy soaring living room ceilings, gourmet kitchen with two sinks, SubZero refrigerator, Wolf gas stove/oven, and walk-in pantry. Impressive circular driveway surrounds a lovely pool and deck perfect for entertaining and gazing at dazzling sunsets. The master suite with walls of windows and endless ocean views connect to a secluded balcony. The spa-like bath offers dual sinks, jacuzzi soaking tub, walk-in shower and closet. Amenities include 24 hr. security, tennis courts, parks and clubhouse. Don't miss this dramatic and bold one-of-a-kind property! **Sale Conditions:** None **Schools:** [Aina Haina](#), [Niu Valley](#), [Kalani](#) \* [Request Showing](#), [Photos](#), [History](#), [Maps](#), [Deed](#), [Watch List](#), [Tax Info](#)





Address	Price	Bd & Bth	Living / Avg.	Land   Avg.	DOM
<a href="#">410 Lelekepue Place</a>	<b>\$4,285,000</b>	5 & 4/1	3,989   \$1,074	19,238   \$223	110

Address	Tax   Maint.   Ass.	Assessed Land	Assessed Building	Assessed Total	Ratio	Year & Remodeled
<a href="#">410 Lelekepue Place</a>	\$907   \$0   \$306	\$2,185,800	\$1,064,000	\$3,249,800	132%	2009 & NA

Address	Sold Price	Sold Date	Sold Ratio	Original Ratio	Sold Terms
<a href="#">410 Lelekepue Place</a>	\$3,950,000	03-24-2023	92%	88%	Cash

[410 Lelekepue Place](#) - MLS#: [202220837](#) - Original price was \$4,485,000 - Welcome to prestigious HAWAII LOA RIDGE, a gated premier luxury community in Honolulu. This 5 bedroom, 4.5 bath residence sits on a large, private 19,238 sq. ft. rim lot at the end of a quiet cul-de-sac with BREATHTAKING OCEAN, MOUNTAIN AND KOKO HEAD VIEWS. Fun, whimsical interior spaces are accented with a playful and vibrant color scheme - A Must See! This unique home features 2 bedrooms, 2 full baths plus an office on the main level and 3 bedrooms, 2 full baths on second level. Enjoy soaring living room ceilings, gourmet kitchen with two sinks, SubZero refrigerator, Wolf gas stove/oven, and walk-in pantry. Impressive circular driveway surrounds a lovely pool and deck perfect for entertaining and gazing at dazzling sunsets. The master suite with walls of windows and endless ocean views connect to a secluded balcony. The spa-like bath offers dual sinks, jacuzzi soaking tub, walk-in shower and closet. Amenities include 24 hr. security, tennis courts, parks and clubhouse. Don't miss this dramatic and bold one-of-a-kind property! **Region:** Diamond Head **Neighborhood:** Hawaii Loa Ridge **Condition:** Excellent **Parking:** 3 Car+, Driveway, Garage, Street **Total Parking:** 2 **View:** Coastline, Mountain, Ocean, Sunset **Frontage:** Preservation **Pool:** In Ground, Tile **Zoning:** 04 - R-7.5 Residential District **Sale Conditions:** None **Schools:** [Aina Haina](#), [Niu Valley](#), [Kalani](#)  
 \* [Request Showing](#), [Photos](#), [History](#), [Maps](#), [Deed](#), [Watch List](#), [Tax Info](#)

DOM = Days on Market