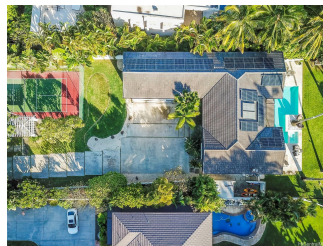
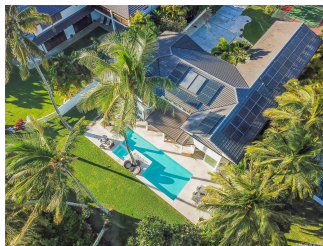


5641 Kalanianaʻole Highway, Honolulu 96821 * \$7,000,000

Beds: 5	MLS#: 202300352, FS	Year Built: 1988
Bath: 5/1	Status: Cancelled	Remodeled: 2022
Living Sq. Ft.: 4,705	List Date & DOM: 01-16-2023 & 294	Total Parking: 8
Land Sq. Ft.: 21,409	Condition: Excellent	Assessed Value
Lanai Sq. Ft.: 0	Frontage: Ocean, Other, Sandy Beach, Waterfront	Building: \$1,940,700
Sq. Ft. Other: 0	Tax/Year: \$4,190/2022	Land: \$3,418,700
Total Sq. Ft. 4,705	Neighborhood: Niu Beach	Total: \$5,359,400
Maint./Assoc. \$0 / \$0	Flood Zone : Zone AE - Tool	Stories / CPR: Two / No
Parking: 3 Car+, Boat, Driveway, Garage	Frontage: Ocean, Other, Sandy Beach, Waterfront	View: Coastline, Diamond Head, Mountain, Ocean, Sunset
Zoning : 03 - R10 - Residential District		

Public Remarks: RARE 100+ linear feet of SPECTACULAR, SANDY BEACH FRONTAGE! Immaculate, modern, home with FOREVER OCEAN VIEWS on this XXL 1/2-acre Lot. TIMELESS PRIVACY & BEAUTY, from the front gate entry, scattered plumeria tree flowers, waterfall, tropical landscaping, a Pickle-ball court, 3-car garage, and a large, 2-Bedroom guest suite above. A private Butlers' entrance area separates the garage and the main house, with 3 Subzero refrigerators and everything else for great BBQs and family gatherings! The main house, with XL windows+sliding glass doors, high ceilings, an open floorplan, and clean, modern lines, creates an oasis of ocean, sky & light. The gourmet Kitchen flows into the Dining, Living, Den, and picture-perfect, boutique resort backyard & pool. Upstairs are 3 XL ensuite, King Bedrooms, the Master has His+Hers separate bathroom vanity areas, a Spa shower & tub with endless blue ocean views. RENOVATIONS COMPLETED MAY 2023: upstairs BATHROOMS, CUSTOM WINDOWS & AC window units removed with Central AC Lots of storage space, 2 foyer bath downstairs, 2 living areas where a 5th Bedroom can easily be made, tradewinds, coconut trees & starry skies. Private, elegant, timeless Hawaii home **Sale Conditions:** None **Schools:** [Aina Haina](#), [Niu Valley](#), [Kalani](#) * [Request Showing](#), [Photos](#), [History](#), [Maps](#), [Deed](#), [Watch List](#), [Tax Info](#)





Address	Price	Bd & Bth	Living / Avg.	Land Avg.	DOM
5641 Kalanianaʻole Highway	\$7,000,000	5 & 5/1	4,705 \$1,488	21,409 \$327	294

Address	Tax Maint. Ass.	Assessed Land	Assessed Building	Assessed Total	Ratio	Year & Remodeled
5641 Kalanianaʻole Highway	\$4,190 \$0 \$0	\$3,418,700	\$1,940,700	\$5,359,400	131%	1988 & 2022

[5641 Kalanianaʻole Highway](#) - MLS#: [202300352](#) - RARE 100+ linear feet of SPECTACULAR, SANDY BEACH FRONTAGE! Immaculate, modern, home with FOREVER OCEAN VIEWS on this XXL 1/2-acre Lot. TIMELESS PRIVACY & BEAUTY, from the front gate entry, scattered plumeria tree flowers, waterfall, tropical landscaping, a Pickle-ball court, 3-car garage, and a large, 2-Bedroom guest suite above. A private Butlers' entrance area separates the garage and the main house, with 3 Subzero refrigerators and everything else for great BBQs and family gatherings! The main house, with XL windows+sliding glass doors, high ceilings, an open floorplan, and clean, modern lines, creates an oasis of ocean, sky & light. The gourmet Kitchen flows into the Dining, Living, Den, and picture-perfect, boutique resort backyard & pool. Upstairs are 3 XL ensuite, King Bedrooms, the Master has His+Hers separate bathroom vanity areas, a Spa shower & tub with endless blue ocean views. RENOVATIONS COMPLETED MAY 2023: upstairs BATHROOMS, CUSTOM WINDOWS & AC window units removed with Central AC Lots of storage space, 2 foyer bath downstairs, 2 living areas where a 5th Bedroom can easily be made, tradewinds, coconut trees & starry skies. Private, elegant, timeless Hawaii home **Region:** Diamond Head **Neighborhood:** Niu Beach **Condition:** Excellent **Parking:** 3 Car+, Boat, Driveway, Garage **Total Parking:** 8 **View:** Coastline, Diamond Head, Mountain, Ocean, Sunset **Frontage:** Ocean, Other, Sandy Beach, Waterfront **Pool:** Heated, In Ground, Spa/HotTub, Tile, Pool on Property **Zoning:** 03 - R10 - Residential District **Sale Conditions:** None **Schools:** [Aina Haina](#), [Niu Valley](#), [Kalani](#) * [Request Showing](#), [Photos](#), [History](#), [Maps](#), [Deed](#), [Watch List](#), [Tax Info](#)

DOM = Days on Market