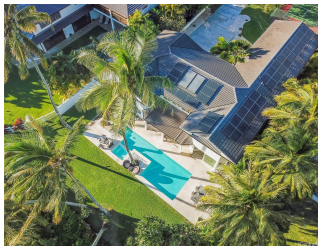


## **5641 Kalanianaʻole Highway, Honolulu 96821 \* \$7,000,000**

Beds: <b>5</b>	MLS#: <b>202300352, FS</b>	Year Built: <b>1988</b>
Bath: <b>5/1</b>	Status: <b>Cancelled</b>	Remodeled: <b>2022</b>
Living Sq. Ft.: <b>4,705</b>	List Date & DOM: <b>01-16-2023 &amp; 294</b>	Total Parking: <b>8</b>
Land Sq. Ft.: <b>21,409</b>	Condition: <b>Excellent</b>	<a href="#">Assessed Value</a>
Lanai Sq. Ft.: <b>0</b>	<b>Ocean, Other, Sandy Beach, Waterfront</b>	Building: <b>\$1,940,700</b>
Sq. Ft. Other: <b>0</b>	Tax/Year: <b>\$4,190/2022</b>	Land: <b>\$3,418,700</b>
Total Sq. Ft. <b>4,705</b>	Neighborhood: <b>Niu Beach</b>	Total: <b>\$5,359,400</b>
Maint./Assoc. <b>\$0 / \$0</b>	<a href="#">Flood Zone</a> : <b>Zone AE - Tool</b>	Stories / CPR: <b>Two / No</b>
Parking: <b>3 Car+, Boat, Driveway, Garage</b>	Frontage: <b>Ocean, Other, Sandy Beach, Waterfront</b>	View: <b>Coastline, Diamond Head, Mountain, Ocean, Sunset</b>
<a href="#">Zoning</a> : <b>03 - R10 - Residential District</b>		

**Public Remarks:** RARE 100+ linear feet of SPECTACULAR, SANDY BEACH FRONTAGE! Immaculate, modern, home with FOREVER OCEAN VIEWS on this XXL 1/2-acre Lot. TIMELESS PRIVACY & BEAUTY, from the front gate entry, scattered plumeria tree flowers, waterfall, tropical landscaping, a Pickle-ball court, 3-car garage, and a large, 2-Bedroom guest suite above. A private Butlers' entrance area separates the garage and the main house, with 3 Subzero refrigerators and everything else for great BBQs and family gatherings! The main house, with XL windows+sliding glass doors, high ceilings, an open floorplan, and clean, modern lines, creates an oasis of ocean, sky & light. The gourmet Kitchen flows into the Dining, Living, Den, and picture-perfect, boutique resort backyard & pool. Upstairs are 3 XL ensuite, King Bedrooms, the Master has His+Hers separate bathroom vanity areas, a Spa shower & tub with endless blue ocean views. RENOVATIONS COMPLETED MAY 2023: upstairs BATHROOMS, CUSTOM WINDOWS & AC window units removed with Central AC Lots of storage space, 2 foyer bath downstairs, 2 living areas where a 5th Bedroom can easily be made, tradewinds, coconut trees & starry skies. Private, elegant, timeless Hawaii home **Sale Conditions:** None **Schools:** [Aina Haina](#), [Niu Valley](#), [Kalani](#) \* [Request Showing](#), [Photos](#), [History](#), [Maps](#), [Deed](#), [Watch List](#), [Tax Info](#)



Address	Price	Bd & Bth	Living / Avg.	Land   Avg.	DOM
<a href="#">5641 Kalanianaʻole Highway</a>	<a href="#">\$7,000,000</a>	5 & 5/1	4,705   \$1,488	21,409   \$327	294

Address	Tax   Maint.   Ass.	Assessed Land	Assessed Building	Assessed Total	Ratio	Year & Remodeled
<a href="#">5641 Kalanianaʻole Highway</a>	\$4,190   \$0   \$0	\$3,418,700	\$1,940,700	\$5,359,400	131%	1988 & 2022

[5641 Kalanianaʻole Highway](#) - MLS#: [202300352](#) - RARE 100+ linear feet of SPECTACULAR, SANDY BEACH FRONTAGE! Immaculate, modern, home with FOREVER OCEAN VIEWS on this XXL 1/2-acre Lot. TIMELESS PRIVACY & BEAUTY, from the front gate entry, scattered plumeria tree flowers, waterfall, tropical landscaping, a Pickle-ball court, 3-car garage, and a large, 2-Bedroom guest suite above. A private Butlers' entrance area separates the garage and the main house, with 3 Subzero refrigerators and everything else for great BBQs and family gatherings! The main house, with XL windows+sliding glass doors, high ceilings, an open floorplan, and clean, modern lines, creates an oasis of ocean, sky & light. The gourmet Kitchen flows into the Dining, Living, Den, and picture-perfect, boutique resort backyard & pool. Upstairs are 3 XL ensuite, King Bedrooms, the Master has His+Hers separate bathroom vanity areas, a Spa shower & tub with endless blue ocean views. RENOVATIONS COMPLETED MAY 2023: upstairs BATHROOMS, CUSTOM WINDOWS & AC window units removed with Central AC Lots of storage space, 2 foyer bath downstairs, 2 living areas where a 5th Bedroom can easily be made, tradewinds, coconut trees & starry skies. Private, elegant, timeless Hawaii home **Region:** Diamond Head **Neighborhood:** Niu Beach **Condition:** Excellent **Parking:** 3 Car+, Boat, Driveway, Garage **Total Parking:** 8 **View:** Coastline, Diamond Head, Mountain, Ocean, Sunset **Frontage:** Ocean,Other,Sandy Beach,Waterfront **Pool:** Heated,In Ground,Spa/HotTub,Tile,Pool on Property **Zoning:** 03 - R10 - Residential District **Sale Conditions:** None **Schools:** [Aina Haina](#), [Niu Valley](#), [Kalani](#) \* [Request Showing](#), [Photos](#), [History](#), [Maps](#), [Deed](#), [Watch List](#), [Tax Info](#)

DOM = Days on Market