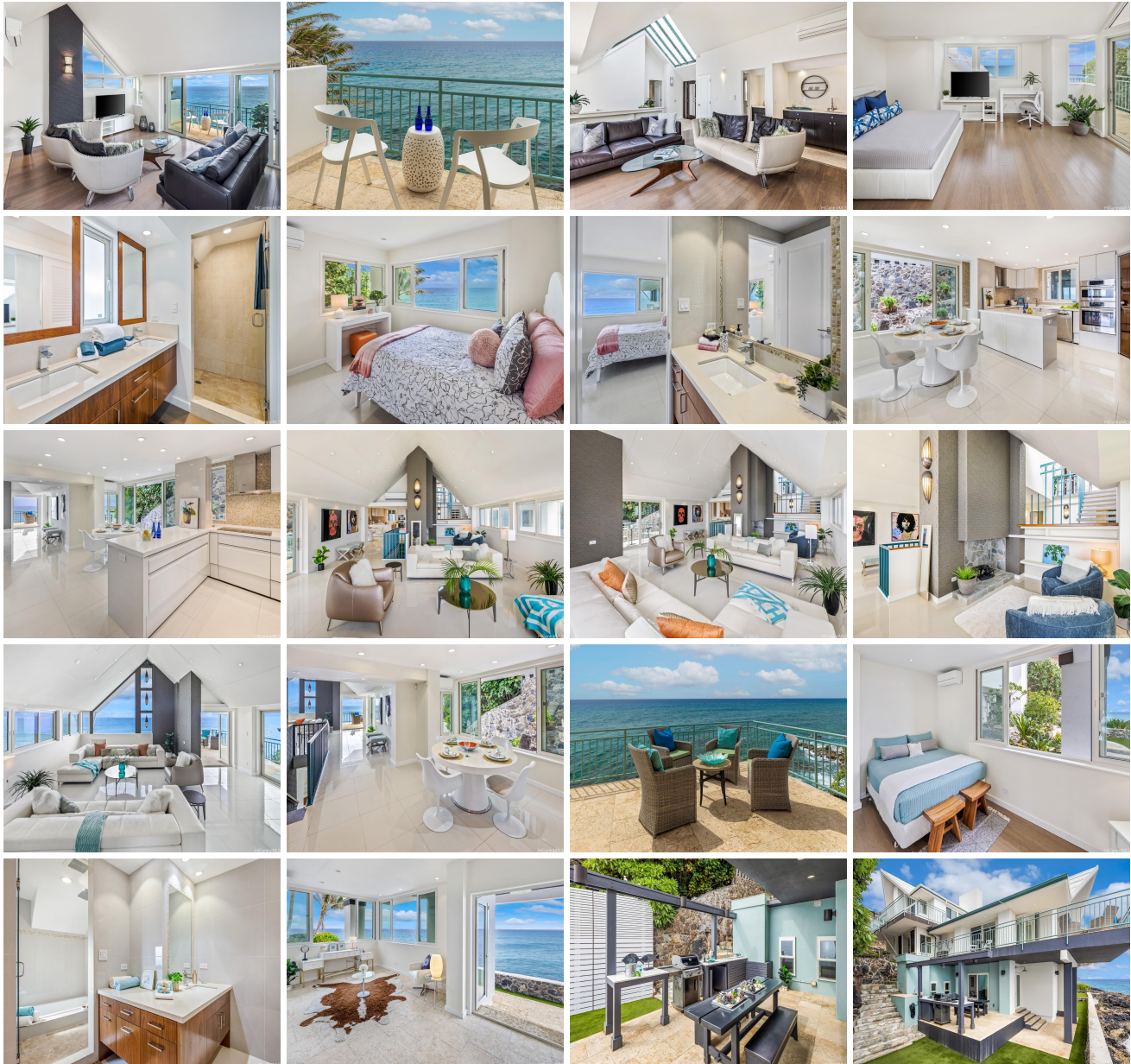


**4131 Black Point Place, Honolulu 96816 \* \$6,480,000 \* Originally \$7,200,000**

Beds: <b>3</b>	MLS#: <b>202302012, FS</b>	Year Built: <b>1959</b>
Bath: <b>3/2</b>	Status: <b>Active</b>	Remodeled: <b>2016</b>
Living Sq. Ft.: <b>2,997</b>	List Date & DOM: <b>03-14-2023 &amp; 411</b>	Total Parking: <b>2</b>
Land Sq. Ft.: <b>9,650</b>	Condition: <b>Excellent</b>	<a href="#">Assessed Value</a>
Lanai Sq. Ft.: <b>836</b>	Frontage: <b>Ocean</b>	Building: <b>\$787,800</b>
Sq. Ft. Other: <b>0</b>	Tax/Year: <b>\$1,625/2023</b>	Land: <b>\$4,922,700</b>
Total Sq. Ft. <b>3,833</b>	Neighborhood: <b>Diamond Head</b>	Total: <b>\$5,710,500</b>
Maint./Assoc. <b>\$0 / \$375</b>	<a href="#">Flood Zone</a> : <b>Zone VE - Tool</b>	Stories / CPR: <b>Three+ / No</b>
Parking: <b>3 Car+, Driveway, Garage, Street</b>	Frontage: <b>Ocean</b>	
<a href="#">Zoning</a> : <b>04 - R-7.5 Residential District</b>	View: <b>Coastline, Diamond Head, Mountain, Ocean, Sunrise, Sunset</b>	

**Public Remarks:** Dramatic oceanfront location at the end of Black Point Place with an amazing history. Named "The Crest" and created by Earl Nisbet, a protégé of Frank Lloyd Wright, designed a home way ahead of its time. Mr. Nisbet understood how magical the ocean is and designed the home with views of it from almost every room, additionally there is a large courtyard for parking the many guests who will want to enjoy the views and sounds of the ocean with you. The homes original design still shines through and with the detailed renovation in 2017 makes it "one of a kind" for the Black Point area. A short walk gives you access to the ocean fed community pool, additionally there are several walkways to the ocean for swimming, snorkeling or surfing. Enjoy privacy and security in this beautiful gated community. **Sale Conditions:** None **Schools:** [Kahala](#), [Kaimuki](#), [Kalani](#) \* [Request Showing](#), [Photos](#), [History](#), [Maps](#), [Deed](#), [Watch List](#), [Tax Info](#)





Address	Price	Bd & Bth	Living / Avg.	Land   Avg.	DOM
<a href="#">4131 Black Point Place</a>	<b>\$6,480,000</b>	3 & 3/2	2,997   \$2,162	9,650   \$672	411

Address	Tax   Maint.   Ass.	Assessed Land	Assessed Building	Assessed Total	Ratio	Year & Remodeled
<a href="#">4131 Black Point Place</a>	\$1,625   \$0   \$375	\$4,922,700	\$787,800	\$5,710,500	113%	1959 & 2016

[4131 Black Point Place](#) - MLS#: [202302012](#) - Original price was \$7,200,000 - Dramatic oceanfront location at the end of Black Point Place with an amazing history. Named "The Crest" and created by Earl Nisbet, a protégé of Frank Lloyd Wright, designed a home way ahead of its time. Mr. Nisbet understood how magical the ocean is and designed the home with views of it from almost every room, additionally there is a large courtyard for parking the many guests who will want to enjoy the views and sounds of the ocean with you. The homes original design still shines through and with the detailed renovation in 2017 makes it "one of a kind" for the Black Point area. A short walk gives you access to the ocean fed community pool, additionally there are several walkways to the ocean for swimming, snorkeling or surfing. Enjoy privacy and security in this beautiful gated community. **Region:** Diamond Head **Neighborhood:** Diamond Head **Condition:** Excellent **Parking:** 3 Car+, Driveway, Garage, Street **Total Parking:** 2 **View:** Coastline, Diamond Head, Mountain, Ocean, Sunrise, Sunset **Frontage:** Ocean **Pool:** Community Association Pool **Zoning:** 04 - R-7.5 Residential District **Sale Conditions:** None **Schools:** [Kahala](#), [Kaimuki](#), [Kalani](#) \* [Request Showing](#), [Photos](#), [History](#), [Maps](#), [Deed](#), [Watch List](#), [Tax Info](#)

DOM = Days on Market