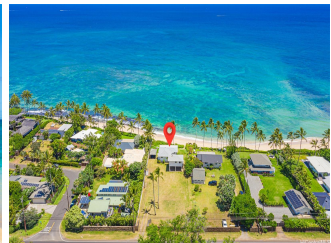
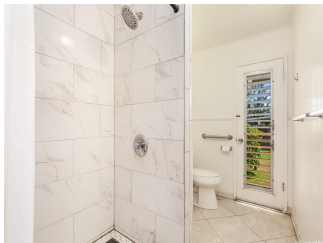


61-695 Kamehameha Highway, Haleiwa 96712 * \$4,750,000 * Originally \$4,970,000

Beds: 3	MLS#: <u>202310676</u>, FS	Year Built: 1960
Bath: 3/0	Status: Active	Remodeled:
Living Sq. Ft.: 1,368	List Date & DOM: 06-12-2023 & 338	Total Parking: 4
Land Sq. Ft.: 20,703	Condition: Above Average	Assessed Value
Lanai Sq. Ft.: 0	Frontage: Ocean, Sandy Beach	Building: \$1,154,500
Sq. Ft. Other: 0	Tax/Year: \$2,023/2023	Land: \$2,535,200
Total Sq. Ft. 1,368	Neighborhood: Kawailoa-north Shore	Total: \$3,689,700
Maint./Assoc. \$0 / \$0	Flood Zone : Zone VE - <u>Tool</u>	Stories / CPR: Two / No
Parking: 3 Car+, Boat, Carport	Frontage: Ocean, Sandy Beach	View: Mountain, Ocean, Sunset
Zoning : 05 - R-5 Residential District		

Public Remarks: Picturesque, nearly ½ acre beachfront property located on Oahu's North Shore. Oceanfront opportunities on this highly coveted stretch of coastline are rare so do not miss out on this incredible opportunity. Watch Humpback whales breach from your backyard, paddle out to surf a few of the finest waves in the Hawaiian Islands, or simply stroll the pristine white sand beach of world renown Laniakea Beach. The properties close proximity to the amenities, restaurants, shopping, and unique charm of historic Haleiwa town also adds a wonderful convenience factor. Ideal for investors, developers, or owner occupants. 20,703 sq.ft. lot zoned R-5 with 91 feet of ocean frontage. Do not miss this incredible opportunity, call your realtor today to schedule a showing. **Sale Conditions:** None **Schools:** , , * [Request Showing](#), [Photos](#), [History](#), [Maps](#), [Deed](#), [Watch List](#), [Tax Info](#)





Address	Price	Bd & Bth	Living / Avg.	Land Avg.	DOM
61-695 Kamehameha Highway	\$4,750,000	3 & 3/0	1,368 \$3,472	20,703 \$229	338

Address	Tax Maint. Ass.	Assessed Land	Assessed Building	Assessed Total	Ratio	Year & Remodeled
61-695 Kamehameha Highway	\$2,023 \$0 \$0	\$2,535,200	\$1,154,500	\$3,689,700	129%	1960 & NA

[61-695 Kamehameha Highway](#) - MLS#: [202310676](#) - Original price was \$4,970,000 - Picturesque, nearly ½ acre beachfront property located on Oahu's North Shore. Oceanfront opportunities on this highly coveted stretch of coastline are rare so do not miss out on this incredible opportunity. Watch Humpback whales breach from your backyard, paddle out to surf a few of the finest waves in the Hawaiian Islands, or simply stroll the pristine white sand beach of world renown Laniakea Beach. The properties close proximity to the amenities, restaurants, shopping, and unique charm of historic Haleiwa town also adds a wonderful convenience factor. Ideal for investors, developers, or owner occupants. 20,703 sq.ft. lot zoned R-5 with 91 feet of ocean frontage. Do not miss this incredible opportunity, call your realtor today to schedule a showing. **Region:** North Shore **Neighborhood:** Kawaioloa-north Shore **Condition:** Above Average **Parking:** 3 Car+, Boat, Carport **Total Parking:** 4 **View:** Mountain, Ocean, Sunset **Frontage:** Ocean,Sandy Beach **Pool:** None **Zoning:** 05 - R-5 Residential District **Sale Conditions:** None **Schools:** , , * [Request Showing](#), [Photos](#), [History](#), [Maps](#), [Deed](#), [Watch List](#), [Tax Info](#)

DOM = Days on Market