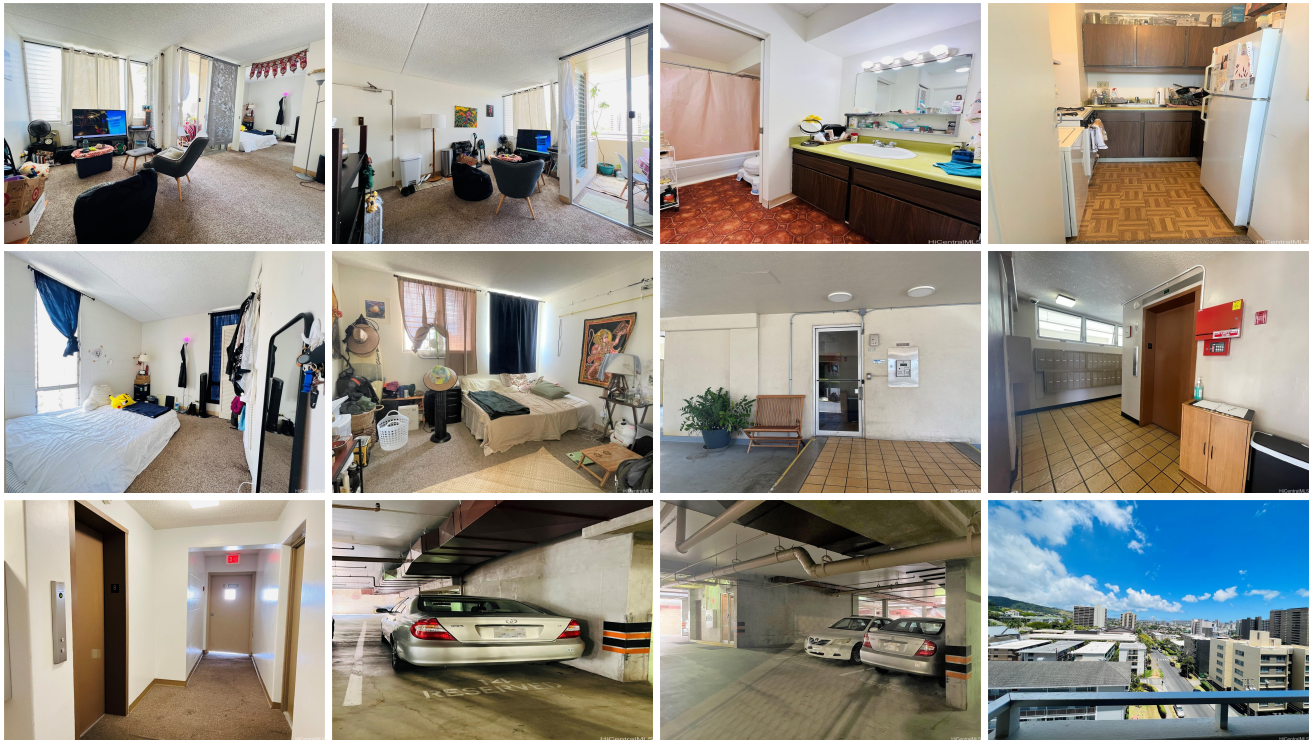


Pulelehua 1624 Dole Street Unit 804, Honolulu 96822 * \$390,000 * Originally \$410,000

Beds: 2	MLS#: 202311695, FS	Year Built: 1975
Bath: 1/0	Status: Active	Remodeled:
Living Sq. Ft.: 599	List Date & DOM: 05-31-2023 & 354	Total Parking: 1
Land Sq. Ft.: 12,415	Condition: Above Average	Assessed Value
Lanai Sq. Ft.: 50	Frontage: Other	Building: \$310,000
Sq. Ft. Other: 0	Tax/Year: \$103/2023	Land: \$61,100
Total Sq. Ft. 649	Neighborhood: Punahou	Total: \$371,100
Maint./Assoc. \$828 / \$0	Flood Zone : Zone X - Tool	Stories / CPR: 8-14 / No
Parking: Covered - 1, Guest	Frontage: Other	
Zoning : 13 - A-3 High Density Apartment	View: City, Mountain	

Public Remarks: 2 Bed 1 Bath condo with a covered lanai at Pulelehua in Punahou! 1 covered parking stall included. Highly desired stacked washer dryer in the unit. Partial Diamond Head and City views on the cool side of the building. Maintenance fee includes electricity, gas, water, and sewer. Close to proximity to Punahou & Maryknoll School. Located near H-1 Freeway on and off ramps, Kapiolani Hospital, and UH Manoa. **Sale Conditions:** None **Schools:** , , * [Request Showing](#), [Photos](#), [History](#), [Maps](#), [Deed](#), [Watch List](#), [Tax Info](#)



Address	Price	Bd & Bth	Living / Avg.	Land Avg.	DOM
1624 Dole Street 804	\$390,000	2 & 1/0	599 \$651	12,415 \$31	354

Address	Tax Maint. Ass.	Assessed Land	Assessed Building	Assessed Total	Ratio	Year & Remodeled
1624 Dole Street 804	\$103 \$828 \$0	\$61,100	\$310,000	\$371,100	105%	1975 & NA

[1624 Dole Street 804](#) - MLS#: [202311695](#) - Original price was \$410,000 - 2 Bed 1 Bath condo with a covered lanai at Pulelehua in Punahou! 1 covered parking stall included. Highly desired stacked washer dryer in the unit. Partial Diamond Head and City views on the cool side of the building. Maintenance fee includes electricity, gas, water, and sewer. Close to proximity to Punahou & Maryknoll School. Located near H-1 Freeway on and off ramps, Kapiolani Hospital, and UH Manoa. **Region:** Metro **Neighborhood:** Punahou **Condition:** Above Average **Parking:** Covered - 1, Guest **Total Parking:** 1 **View:** City, Mountain **Frontage:** Other **Pool:** **Zoning:** 13 - A-3 High Density Apartment **Sale Conditions:** None **Schools:** , , * [Request Showing](#), [Photos](#), [History](#), [Maps](#), [Deed](#), [Watch List](#), [Tax Info](#)

DOM = Days on Market