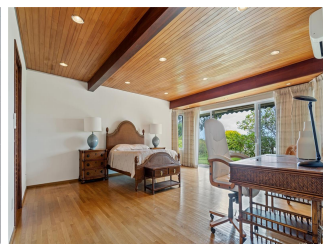
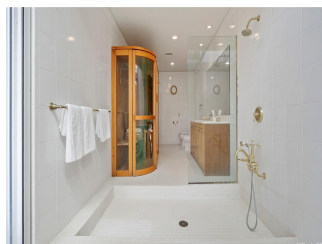
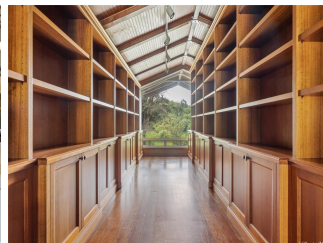


47-477 Waihee Place, Kaneohe 96744 * \$14,000,000

Beds: 6	MLS#: 202313852, FS	Year Built: 1959
Bath: 5/0	Status: Active	Remodeled: 2001
Living Sq. Ft.: 3,595	List Date & DOM: 07-01-2023 & 315	Total Parking: 10
Land Sq. Ft.: 1,728,112	Condition: Above Average	Assessed Value
Lanai Sq. Ft.: 0	Frontage: Preservation	Building: \$209,300
Sq. Ft. Other: 0	Tax/Year: \$939/2023	Land: \$1,746,600
Total Sq. Ft. 3,595	Neighborhood: Kahaluu Town	Total: \$1,955,900
Maint./Assoc. \$0 / \$0	Flood Zone : Zone D - Tool	Stories / CPR: Two / No
Parking: 3 Car+, Driveway, Garage	Frontage: Preservation	
Zoning : 61 - P-1 Restricted Preservatio	View: Coastline, Mountain, Ocean, Other, Sunrise	

Public Remarks: Welcome to your own private oasis with the option to live completely off grid! Take in the stunning 180 degree views of the ocean and Kaneohe Bay. This incredible property is a total of 40 acres, 16 acres of Ag-2 land, Approx 7 acres of Flat Land & 24 acres of preservation. Perfect for hiking, horseback riding, farming, equestrian center, helipad, or even a cluster development. MILLIONS have been spent on this meticulously planned infrastructure including an extensive drainage system to mitigate flooding and pooling, with 24 inch city grade pipes and a silting pond. The planning doesn't stop there, it also has 600 amp Electric & Wifi house, a private water well, extra wide paved driveways that provide easy access to multiple points on the property, underground electrical conduits, multiple fire hydrants and water hydrant access points for more structures. ***MAIN HOUSE 2,497 sqft 3 bed/3 bath w/ full chef's kitchen, heated pool and outdoor shower just off the large entertaining area. COTTAGE 1,100sqft 3 bed/2 bath. ***Also listed as LAND, see MLS# 202326790 **Sale Conditions:** None

Schools: , , * [Request Showing](#), [Photos](#), [History](#), [Maps](#), [Deed](#), [Watch List](#), [Tax Info](#)





Address	Price	Bd & Bth	Living / Avg.	Land Avg.	DOM
47-477 Waihee Place	\$14,000,000	6 & 5/0	3,595 \$3,894	1,728,112 \$8	315

Address	Tax Maint. Ass.	Assessed Land	Assessed Building	Assessed Total	Ratio	Year & Remodeled
47-477 Waihee Place	\$939 \$0 \$0	\$1,746,600	\$209,300	\$1,955,900	716%	1959 & 2001

[47-477 Waihee Place](#) - MLS#: [202313852](#) - Welcome to your own private oasis with the option to live completely off grid! Take in the stunning 180 degree views of the ocean and Kaneohe Bay. This incredible property is a total of 40 acres, 16 acres of Ag-2 land, Approx 7 acres of Flat Land & 24 acres of preservation. Perfect for hiking, horseback riding, farming, equestrian center, helipad, or even a cluster development. MILLIONS have been spent on this meticulously planned infrastructure including an extensive drainage system to mitigate flooding and pooling, with 24 inch city grade pipes and a silting pond. The planning doesn't stop there, it also has 600 amp Electric & Wifi house, a private water well, extra wide paved driveways that provide easy access to multiple points on the property, underground electrical conduits, multiple fire hydrants and water hydrant access points for more structures. ***MAIN HOUSE 2,497 sqft 3 bed/3 bath w/ full chef's kitchen, heated pool and outdoor shower just off the large entertaining area. COTTAGE 1,100sqft 3 bed/2 bath. ***Also listed as LAND, see MLS# 202326790 **Region:** Kaneohe **Neighborhood:** Kahaluu Town **Condition:** Above Average **Parking:** 3 Car+, Driveway, Garage **Total Parking:** 10 **View:** Coastline, Mountain, Ocean, Other, Sunrise **Frontage:** Preservation **Pool:** Heated, In Ground, Plaster, Pool on Property **Zoning:** 61 - P-1 Restricted Preservatio **Sale Conditions:** None **Schools:** , , * [Request Showing](#), [Photos](#), [History](#), [Maps](#), [Deed](#), [Watch List](#), [Tax Info](#)

DOM = Days on Market