

5119 Palaole Place, Honolulu 96821 * \$2,750,000 * Originally \$2,950,000

Beds: **5**

MLS#: **202314195**, FS

Year Built: **1972**

Bath: **4/0**

Status: **Active Under Contract**

Remodeled: **2020**

Living Sq. Ft.: **2,283**

List Date & DOM: **08-25-2023 & 221**

Total Parking: **2**

Land Sq. Ft.: **13,174**

Condition: **Above Average**

[Assessed Value](#)

Lanai Sq. Ft.: **455**

Frontage:

Building: **\$665,200**

Sq. Ft. Other: **0**

Tax/Year: **\$437/2024**

Land: **\$1,200,100**

Total Sq. Ft. **2,738**

Neighborhood: **Waiialae Iki**

Total: **\$1,865,300**

Maint./Assoc. **\$0 / \$0**

[Flood Zone](#): **Zone X - Tool**

Stories / CPR: **Split Level / No**

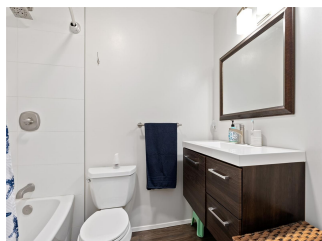
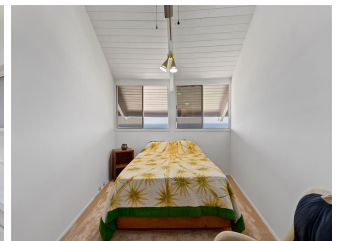
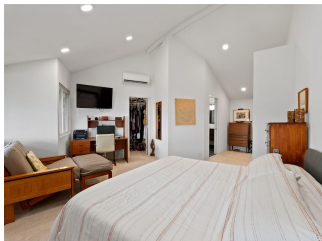
Parking: **2 Car, Carport, Driveway, Street**

Frontage:

[Zoning](#): **04 - R-7.5 Residential District**

View: **Coastline, Diamond Head, Mountain, Ocean**

Public Remarks: Breathtaking & unobstructed panoramic Koko Head, ocean and Diamond Head views await you from this immaculately maintained 5 bdrm/4 bath home in the highly desirable Waiialae Iki neighborhood. Situated on a 13,174 sq. ft. RIM LOT with 2,283 sq. ft. of interior living space, this home features fresh interior paint, soaring vaulted ceilings in the living room, an updated open kitchen with stainless steel appliances and spectacular views from every room in the house. Entertain family & guests by the in-ground swimming pool or relax on the spacious wrap-around lanai where you can soak in the sparkling Blue Pacific while enjoying soothing cool breezes. MAXIMUM PRIVACY and conveniently located near parks, beaches, and Kahala Mall with restaurants, shopping and entertainment. MUST SEE TO APPRECIATE ITS TRUE BEAUTY! **Sale**
Conditions: None **Schools:** [Aina Haina](#), [Niu Valley](#), [Kalani](#) * [Request Showing](#), [Photos](#), [History](#), [Maps](#), [Deed](#), [Watch List](#), [Tax Info](#)





Address	Price	Bd & Bth	Living / Avg.	Land Avg.	DOM
5119 Palaole Place	\$2,750,000	5 & 4/0	2,283 \$1,205	13,174 \$209	221

Address	Tax Maint. Ass.	Assessed Land	Assessed Building	Assessed Total	Ratio	Year & Remodeled
5119 Palaole Place	\$437 \$0 \$0	\$1,200,100	\$665,200	\$1,865,300	147%	1972 & 2020

[5119 Palaole Place](#) - MLS#: [202314195](#) - Original price was \$2,950,000 - Breathtaking & unobstructed panoramic Koko Head, ocean and Diamond Head views await you from this immaculately maintained 5 bdrm/4 bath home in the highly desirable Waialae Iki neighborhood. Situated on a 13,174 sq. ft. RIM LOT with 2,283 sq. ft. of interior living space, this home features fresh interior paint, soaring vaulted ceilings in the living room, an updated open kitchen with stainless steel appliances and spectacular views from every room in the house. Entertain family & guests by the in-ground swimming pool or relax on the spacious wrap-around lanai where you can soak in the sparkling Blue Pacific while enjoying soothing cool breezes. MAXIMUM PRIVACY and conveniently located near parks, beaches, and Kahala Mall with restaurants, shopping and entertainment. MUST SEE TO APPRECIATE ITS TRUE BEAUTY! **Region:** Diamond Head **Neighborhood:** Waialae Iki **Condition:** Above Average **Parking:** 2 Car, Carport, Driveway, Street **Total Parking:** 2 **View:** Coastline, Diamond Head, Mountain, Ocean **Frontage:** Pool: In Ground **Zoning:** 04 - R-7.5 Residential District **Sale Conditions:** None **Schools:** [Aina Haina](#), [Niu Valley](#), [Kalani](#) * [Request Showing](#), [Photos](#), [History](#), [Maps](#), [Deed](#), [Watch List](#), [Tax Info](#)

DOM = Days on Market