

87-1529 Nakii Street, Waianae 96792 * \$710,000 * Originally \$739,900Beds: **3**MLS#: **202317372, FS**Year Built: **2011**Bath: **2/1**Status: **Active Under Contract**

Remodeled:

Living Sq. Ft.: **1,152**List Date & DOM: **07-27-2023 & 155**Total Parking: **4**Land Sq. Ft.: **3,751**Condition: **Above Average**[Assessed Value](#)Lanai Sq. Ft.: **0**

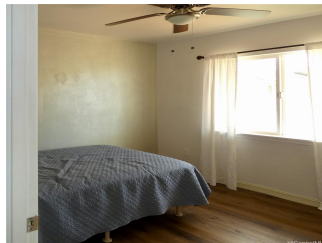
Frontage:

Building: **\$241,600**Sq. Ft. Other: **0**Tax/Year: **\$187/2022**Land: **\$440,700**Total Sq. Ft. **1,152**Neighborhood: **Mali Sea-makalae 1**Total: **\$682,300**Maint./Assoc. **\$0 / \$65**[Flood Zone](#): **Zone X - Tool**Stories / CPR: **Two / No**Parking: **2 Car, Garage**

Frontage:

[Zoning](#): **05 - R-5 Residential District**View: **Mountain, Sunset**

Public Remarks: Seller open to anyone taking over this assumable loan at 2.75% with a total payment of \$3,139 giving you a lower payment than a \$425k purchase!!! A great home in the community of Mali Sea Makalae. You can beat the heat with the central ac powered by owned solar panels with a battery backup. The seller pays an average of \$20 per month on his electric bill and last year received a check back from Hawaiian Electric for over \$200! The open floor plan features a great room downstairs with a eat-in kitchen with maple cabinets, granite counter tops and stainless steel appliances. There is also a large pantry and 1/2 bathroom. The primary suite and two additional bathrooms are located upstairs along with two additional full bathrooms. The large back yard is completely enclosed with vinyl fencing and has a spacious open lanai, grass area, banana tree and newer tool shed. this property is located only 1.2 miles from a sandy beach and less than 1 mile from the trailhead to the world-famous Ma'ili Pillbox Hiking trail. The low association fee of \$65 per month includes access to the Sea Country Community Pool, recreational, and dog park. NO maintenance fee in this area of Sea Country! **Sale Conditions:** None **Schools:** , , * [Request Showing](#), [Photos](#), [History](#), [Maps](#), [Deed](#), [Watch List](#), [Tax Info](#)



Address	Price	Bd & Bth	Living / Avg.	Land Avg.	DOM
87-1529 Nakii Street	\$710,000	3 & 2/1	1,152 \$616	3,751 \$189	155

Address	Tax Maint. Ass.	Assessed Land	Assessed Building	Assessed Total	Ratio	Year & Remodeled
87-1529 Nakii Street	\$187 \$0 \$65	\$440,700	\$241,600	\$682,300	104%	2011 & NA

[87-1529 Nakii Street](#) - MLS#: [202317372](#) - Original price was \$739,900 - Seller open to anyone taking over this assumable loan at 2.75% with a total payment of \$3,139 giving you a lower payment than a \$425k purchase!!! A great home in the community of Maili Sea Makalae. You can beat the heat with the central ac powered by owned solar panels with a battery backup. The seller pays an average of \$20 per month on his electric bill and last year received a check back from Hawaiian Electric for over \$200! The open floor plan features a great room downstairs with a eat-in kitchen with maple cabinets, granite counter tops and stainless steel appliances. There is also a large pantry and 1/2 bathroom. The primary suite and two additional bathrooms are located upstairs along with two additional full bathrooms. The large back yard is completely enclosed with vinyl fencing and has a spacious open lanai, grass area, banana tree and newer tool shed. this property is located only 1.2 miles from a sandy beach and less than 1 mile from the trailhead to the world-famous Ma'ili Pillbox Hiking trail. The low association fee of \$65 per month includes access to the Sea Country Community Pool, recreational, and dog park. NO maintenance fee in this area of Sea Country! **Region:** Leeward **Neighborhood:** Maili Sea-makalae 1 **Condition:** Above Average **Parking:** 2 Car, Garage **Total Parking:** 4 **View:** Mountain, Sunset **Frontage:** Pool: Community Association Pool **Zoning:** 05 - R-5 Residential District **Sale Conditions:** None **Schools:** , , * [Request Showing](#), [Photos](#), [History](#), [Maps](#), [Deed](#), [Watch List](#), [Tax Info](#)

DOM = Days on Market